



**WOODSFORD SQUARE**

*Holland Park, W14*

**£3,250,000**

6 Bed | 3 Bath | 2204sqft

**SANDERSONS**  
LONDON



# *A Landmark Residence in the Heart of Holland Park*

Welcome to this exquisite terraced house located in the prestigious Woodsford Square, Holland Park, within the Royal Borough of Kensington and Chelsea. This remarkable property boasts an impressive 2,204 square feet of living space, providing ample room for both relaxation and entertainment.

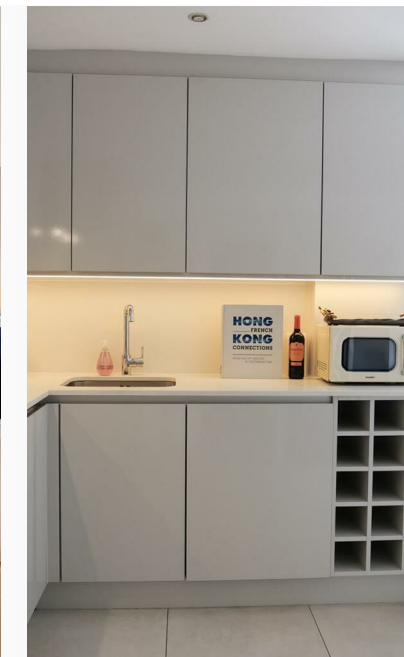
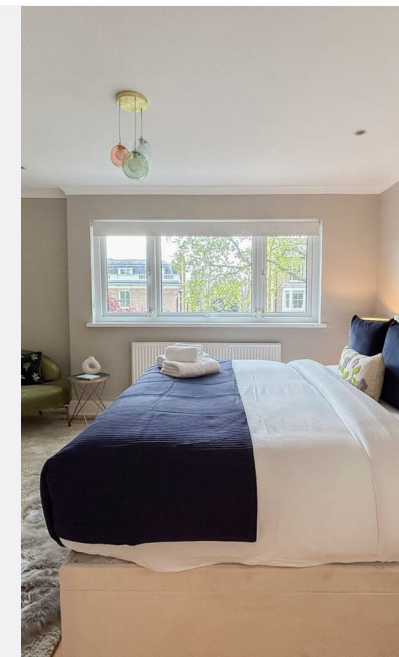
The house features a spacious reception room, perfect for hosting gatherings or enjoying quiet evenings with family. With six well-appointed bedrooms, there is plenty of space for a growing family or for those who desire extra room for guests or a home office. The three modern bathrooms ensure convenience and comfort for all residents.

In addition to its generous living space, this property offers the added benefit of parking for one vehicle, a valuable feature in this sought-after area. The location itself is a true gem, surrounded by the vibrant culture and amenities of Holland Park, while also providing a peaceful retreat from the hustle and bustle of city life.

This home presents a unique opportunity to reside in one of London's most desirable neighbourhoods, combining elegance, space, and convenience. Whether you are looking to make it your family home or an investment, this property is sure to impress.

## KEY FEATURES

- Six bedrooms
- Three modern bathrooms
- Immaculate private garden
- Off-street parking available
- Terraced house in Holland Park
- Close to local amenities
- Easy access to transport links
- Private Garage



**Floor Plan**  
Approximate gross  
internal area.  
Not to scale.



SANDERSONS  
LONDON

108 Holland Park Avenue, London,  
W11 4UA



[romana@sandersonslondon.co.uk](mailto:romana@sandersonslondon.co.uk)



[sandersonslondon.co.uk](http://sandersonslondon.co.uk)

EPC Rating: | Council Tax Band: H