



Pearson Square, Fitzrovia, London, W1T

£2,000,000

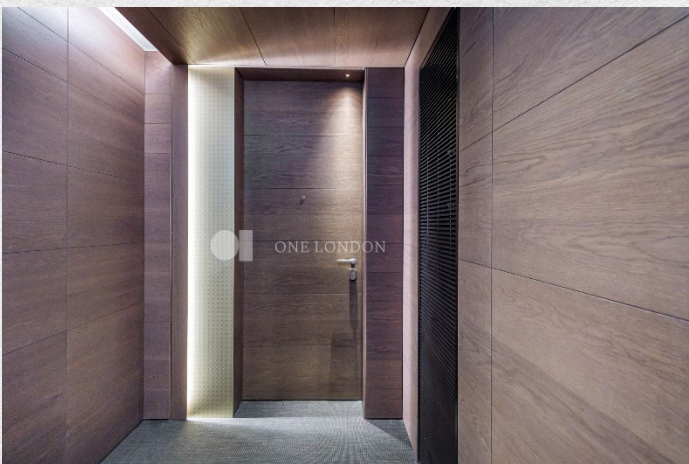
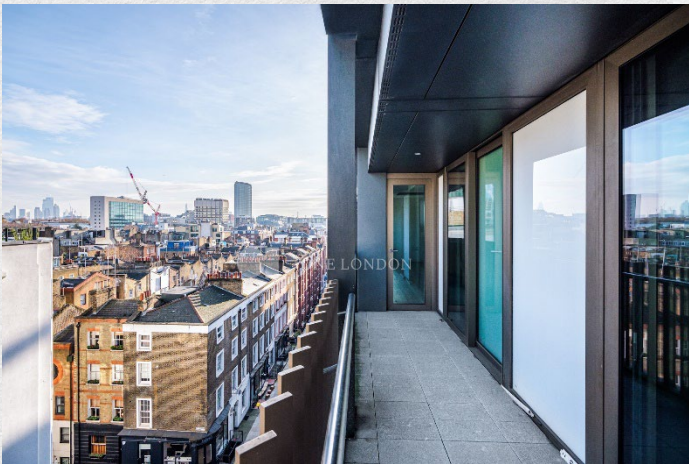
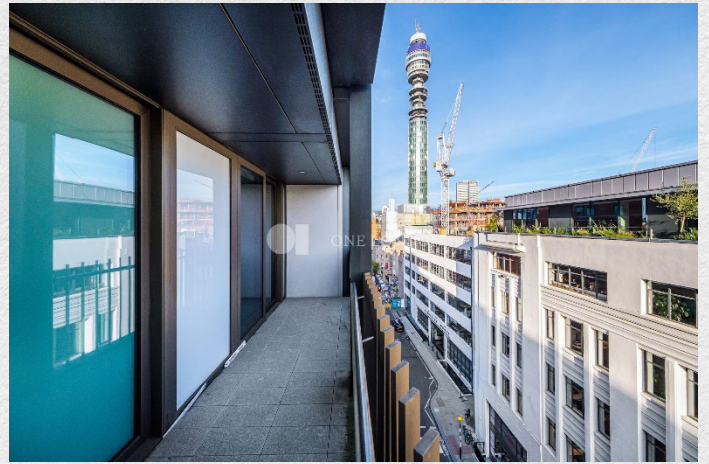
- 6th floor apartment
- Three bedrooms
- Two bathrooms
- Bright open plan living area
- 1,076 sq ft
- Premium residents' amenities
- 24-hour concierge & security service
- Excellent transport links
- Desirable location.

This highly spacious 1,076 sq ft, sixth-floor apartment located in desirable Fitzrovia, London, offers an exceptional blend of modern luxury and urban convenience.

The stylish interior features premium wooden flooring throughout alongside expansive windows that flood the entire home with natural light. Perfect for entertaining guests, the bright open-plan kitchen and living area includes high-end built-in Miele appliances and opens directly onto a private, south-east facing balcony with excellent elevated city views.

The well-designed layout comprises three large bedrooms with fitted wardrobes—including a magnificent master bedroom with an elegant en-suite bathroom—a dedicated study room, and two stylish bathrooms. Luxury residents enjoy exclusive access to world-class on-site amenities, including a premier 24-hour concierge service, private dining room, residents' bar and lounge, state-of-the-art screening room, fully equipped gym, luxury sauna, and therapeutic steam room.

Perfectly placed to experience London's vibrant culture, this property sits moments away from premium shopping destinations on Bond Street and Oxford Street. Acclaimed dining options are right on your doorstep, while beautiful Regent's Park offers peaceful walks nearby. This sophisticated property delivers the ultimate luxury London lifestyle choice.





ONE LONDON

PROPERTY

*Pearson Square, Fitzrovia,
London, W1T*

SIZE

1,076 sq ft

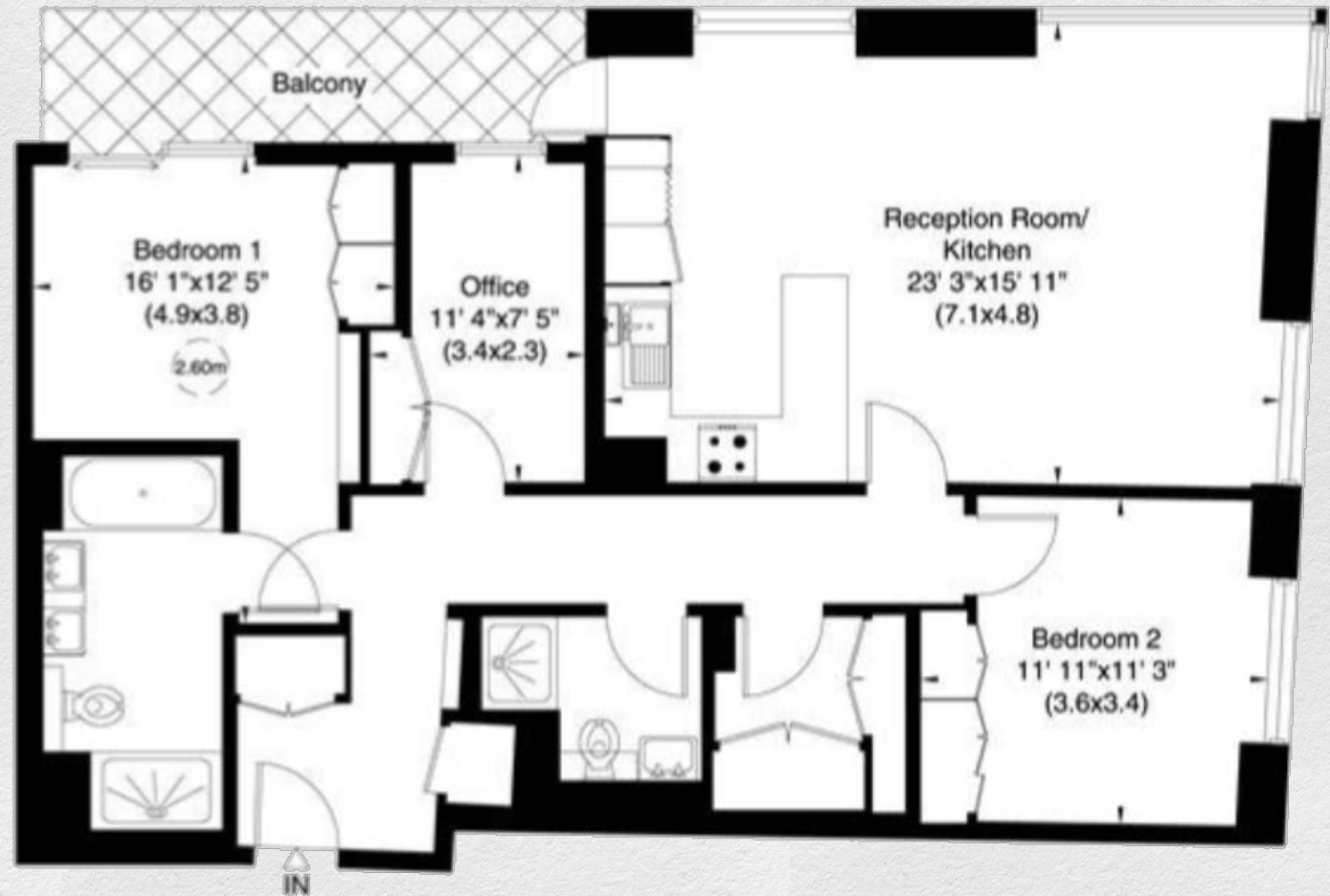
Three bedrooms | Two bathrooms

CONTACT

0207 856 0396

info@one-london.uk

www.one-london.uk



*** For illustration purposes only. Could not be to scale.
One-London aims to ensure accuracy but is not liable
for any discrepancies.*

SP106