



Church Road, Kingswood, BS15 4AZ

03334041188 option 3

Offers in excess of £300,000

guy.rolfe@moving-you.co.uk

Freehold

www.moving-you.co.uk



15A W 10th St









Church Road, Kingswood, Bristol, BS15 4AZ

Superb two bedroom Victorian style terraced home within Kingswood, Bristol, well suited to first time buyers looking for a comfortable home in a convenient location, offering excellent access to many local amenities and bus routes.

Inside this super home, the property offers two lovely reception rooms. The front living room features a large bay window, helping to maximise natural light, while the rear reception enjoys a pleasant garden view, creating a welcoming space for dining, relaxing or home working. There are two good size bedrooms upstairs, including a light and airy master bedroom overlooking the front aspect and a further second bedroom, giving flexible options for couples or sharers. The bathroom is a lovely four piece fitted with a free-standing claw bath and a double shower cubicle.

The house is set in Kingswood, within easy reach of local amenities including supermarkets, independent shops, cafés and takeaways along the nearby high street. There are several green spaces in the area, with Kingswood Park offering open lawns, play areas and walking routes.

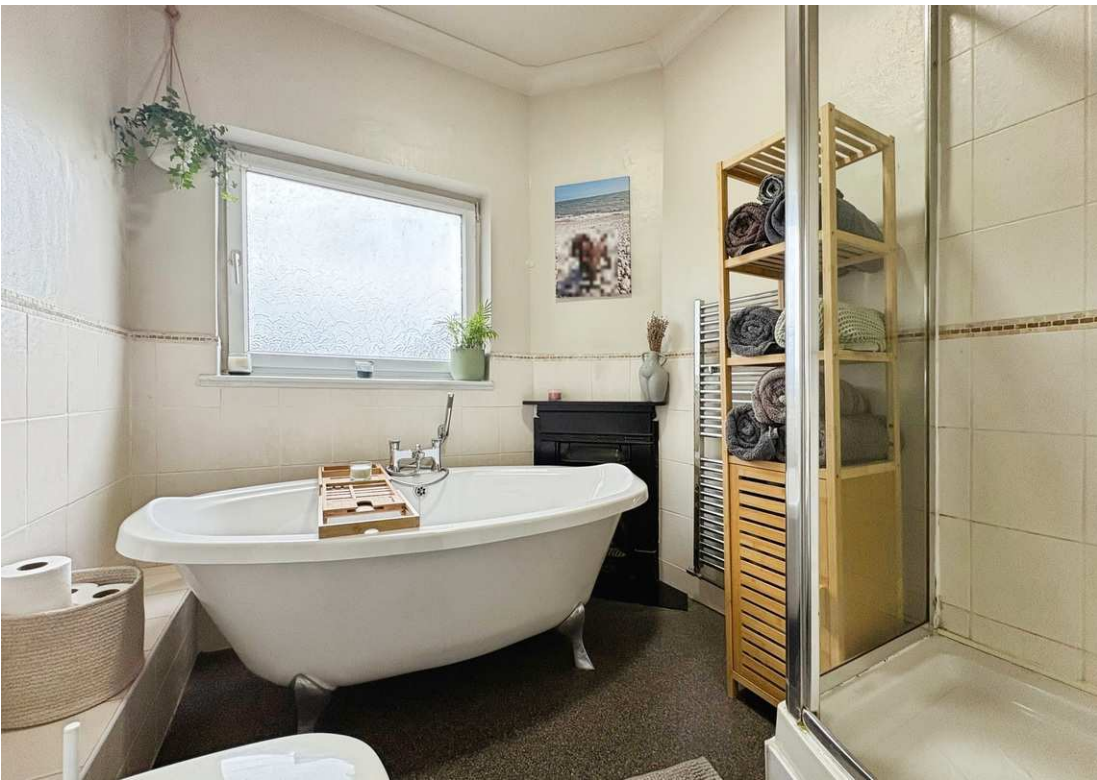
Public transport links are good, with regular bus services into Bristol city centre typically taking around 25–35 minutes depending on the route and time of day. Buses also run towards Longwell Green retail area and neighbouring suburbs. For rail connections, Bristol Temple Meads station can be reached by bus or by car in around 20–30 minutes in usual traffic, offering services to Bath, Cardiff, London and other major destinations.

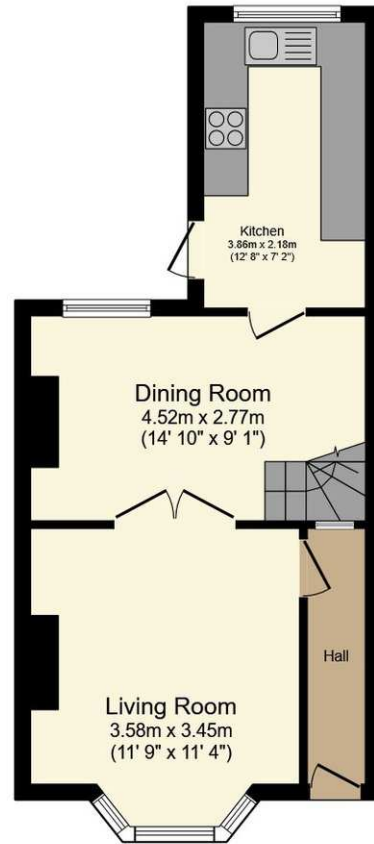
Overall, this 2-bedroom terraced house for sale in Kingswood combines practical living space with access to local amenities, parks and transport, making it an appealing option for first time buyers.

Council Tax Band B









Ground Floor



First Floor

This floor plan is for illustrative purposes only. It is not drawn to scale. Any measurements, floor areas (including any total floor area), openings and orientations are approximate. No details are guaranteed, they cannot be relied upon for any purpose and do not form any part of any agreement. No liability is taken for any error, omission or misstatement. A party must rely upon its own inspection(s). Powered by www.Propertybox.io



Guy Rolfe Moving You

03334041188 option 3

guy.rolfe@moving-you.co.uk

PROPERTY MISDESCRIPTIONS ACT 1991: The Agents has not tested any apparatus, equipment, fixtures and fittings, or services, so cannot verify that they are in working order or fit for the purpose. The buyer is advised to obtain verification from his or her Professional Buyer, References to the Tenure of the property are based on information supplied by the Vendor. The agents have not had sight of the title documents. The buyer is advised to obtain verification from their Solicitor. You are advised to check the availability of any property before travelling any distance to view.

www.moving-you.co.uk