

shepherds
A better home
moving experience



3 Devey Way

Hertford, SG14 2WU

Offers In Excess Of £1,000,000



3 Devey Way

Hertford, SG14 2WU

Forming part of the prestigious Goldings Estate and set within beautifully maintained communal grounds, this exceptional four bedroom home offers stylish and spacious accommodation approaching 2,000 sq ft in one of Hertford's most sought after locations.

Beautifully presented throughout and significantly improved by the current owners, the property blends modern living with characterful architectural features including a stunning galleried dining room with glazed atrium above, generous room proportions and an excellent flow between living spaces.

The ground floor comprises of a welcoming entrance hall with utility cupboard and downstairs WC, a superb bespoke kitchen/breakfast room complete with central island, integrated appliances and extensive storage, opening into the striking dining room with vaulted ceiling and feature fireplace. To the rear is an impressive living room spanning over 20ft in length with doors overlooking the beautifully landscaped rear garden.

The first floor continues to impress with a feature landing overlooking the dining area below. The principal bedroom benefits from fitted wardrobes, vaulted ceilings and doors opening onto a private balcony overlooking the grounds. There are three further well proportioned bedrooms and two modern bathrooms.

Externally, the rear garden has been attractively landscaped with paved entertaining areas, mature hedging and a well maintained lawn offering an excellent degree of privacy. The property also benefits from a garage, allocated parking and additional visitor parking.

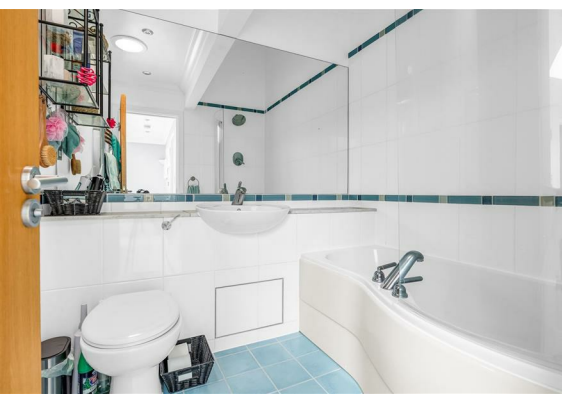
Goldings is widely regarded as one of Hertford's premier residential settings, surrounded by stunning parkland and countryside walks whilst remaining conveniently positioned for Hertford town centre and both Hertford North & East stations.

A truly special home in an outstanding setting and internal viewing is highly recommended.

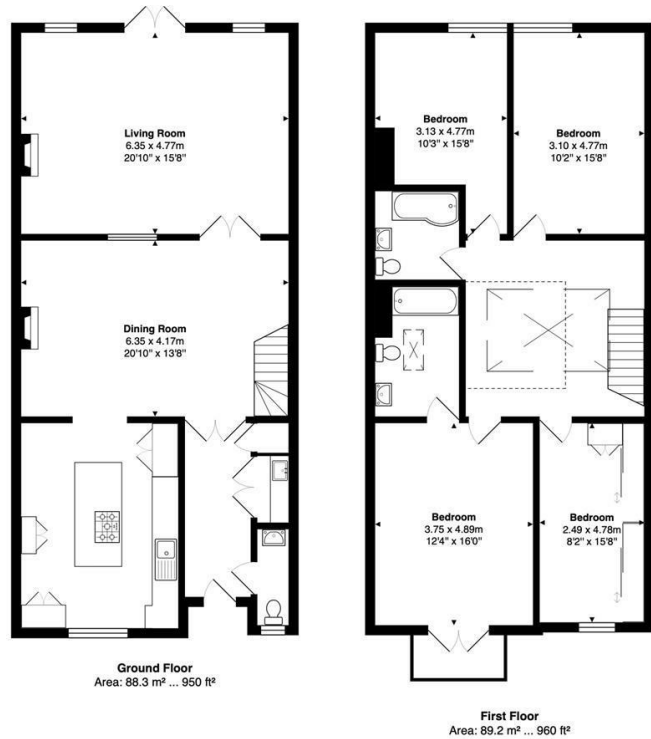




- Prestigious position within the highly regarded Goldings Estate
- Beautifully presented four bedroom home approaching 2,000 sq ft
- Stunning galleried dining room with feature glazed atrium
- Recently refitted bespoke kitchen/breakfast room with central island
- Impressive 20ft living room overlooking the landscaped rear garden
- Additional reception room/snug ideal as a home office or playroom
- Principal bedroom with vaulted ceiling, fitted wardrobes and private balcony
- Two modern bathrooms plus downstairs WC and utility storage
- Attractive landscaped rear garden with excellent degree of privacy
- Garage, allocated parking and ample visitor parking within the development



Floor Plan



Total Area: 178.0 m² ... 1916 ft²

FOR ILLUSTRATIVE PURPOSES ONLY: NOT TO SCALE

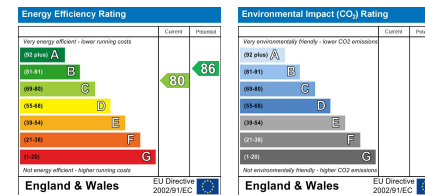
Whilst every attempt has been made to ensure the accuracy of the floor plan shown, all measurements, positioning, fixtures, features, fittings and any other data shown are an approximate interpretation for illustrative purposes only and are not to scale. No responsibility is taken for any error, omission, miss-statement or use of data shown.

Property marketing provided by www.matthewkyle.co.uk

Viewing

Please contact Shepherds of Hertford on 01992 551955 if you wish to arrange a viewing appointment for this property or require further information.

Energy Performance Graph



These particulars, whilst believed to be accurate are set out as a general outline only for guidance and do not constitute any part of an offer or contract. Intending purchasers should not rely on them as statements of representation of fact, but must satisfy themselves by inspection or otherwise as to their accuracy. No person in this firm's employment has the authority to make or give any representation or warranty in respect of the property.

Riverside House, 6 Millbridge, Hertford, SG14 1PY
Tel: 01992 551955 Email: enquiries@shepherdsfhertford.co.uk