



**Brackenbury  
Road W6**



# Brackenbury Road W6

**LOWER GROUND FLOOR FLAT**

**ONE BEDROOM**

**OPEN PLAN KITCHEN / LIVING ROOM**

**WOOD FLOORS THROUGHOUT**

**PRIVATE PATIO GARDEN**

**BATHROOM**

**BUILT IN STORAGE IN THE BEDROOM**

**AVAILABLE END OF JUNE, FURNISHED**

**LOCATED IN THE HEART OF  
BRACKENBURY VILLAGE**

**COUNCIL TAX BAND D**

Charming lower ground floor flat with a private patio garden, comprising of a double bedroom, open plan kitchen / living room and tiled bathroom. The flat benefits from wood floors throughout and good built in storage in the bedroom. Located in the heart of Brackenbury Village, the property is close to the amenities at Goldhawk Road and Westfield White City. Great transport connections at Shepherds Bush, Hammersmith and Goldhawk Road stations. Available furnished from the end of June. Council Tax band D.

**£1,750 PER MONTH**

**SUBJECT TO CONTRACT**

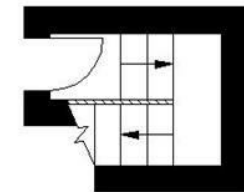
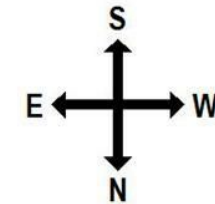
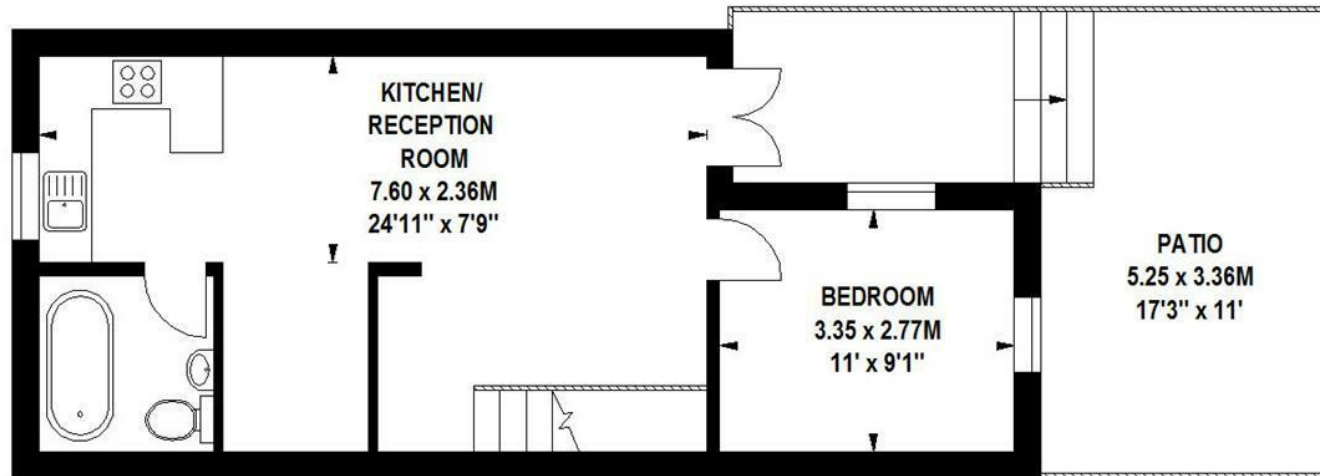






# Brackenbury Road, W6

Approximate gross internal area  
47 sq m / 506 sq ft



**Ground Floor  
Entrance**

**Lower Ground Floor**

Floor Plan produced for Finlay Brewer by Mays Floorplans © . Tel 020 3397 4594  
Illustration for identification purposes only, not to scale.  
All measurements are maximum and include wardrobes and window bays where applicable.