



Abercorn Place, NW8

£425 Per week

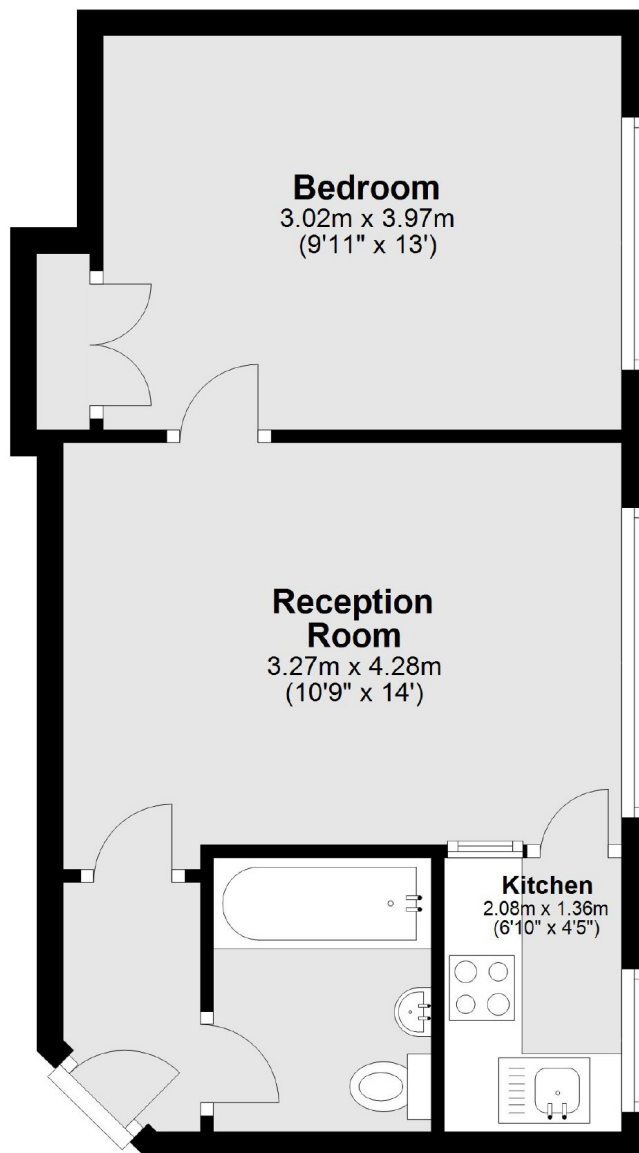
A one double bedroom apartment on the fourth floor (with lift) in a 24 hour portered block. Bright reception room, separate kitchen, double bedroom and bathroom. Wood floors in the reception room. Communal heating and hot water included.

Abercorn Place is located off Abbey Road with easy reach to the open green space of Regents Park and local shops and cafés on St Johns Wood High Street.

Features

- One Double Bedroom
- Separate Kitchen
- Wood Floors
- Heating and Hot Water Included In Rent
- Fourth Floor Apartment
- Lift

Abercorn Place, London, NW8



Total area: approx. 35.2 sq. metres (378.6 sq. feet)