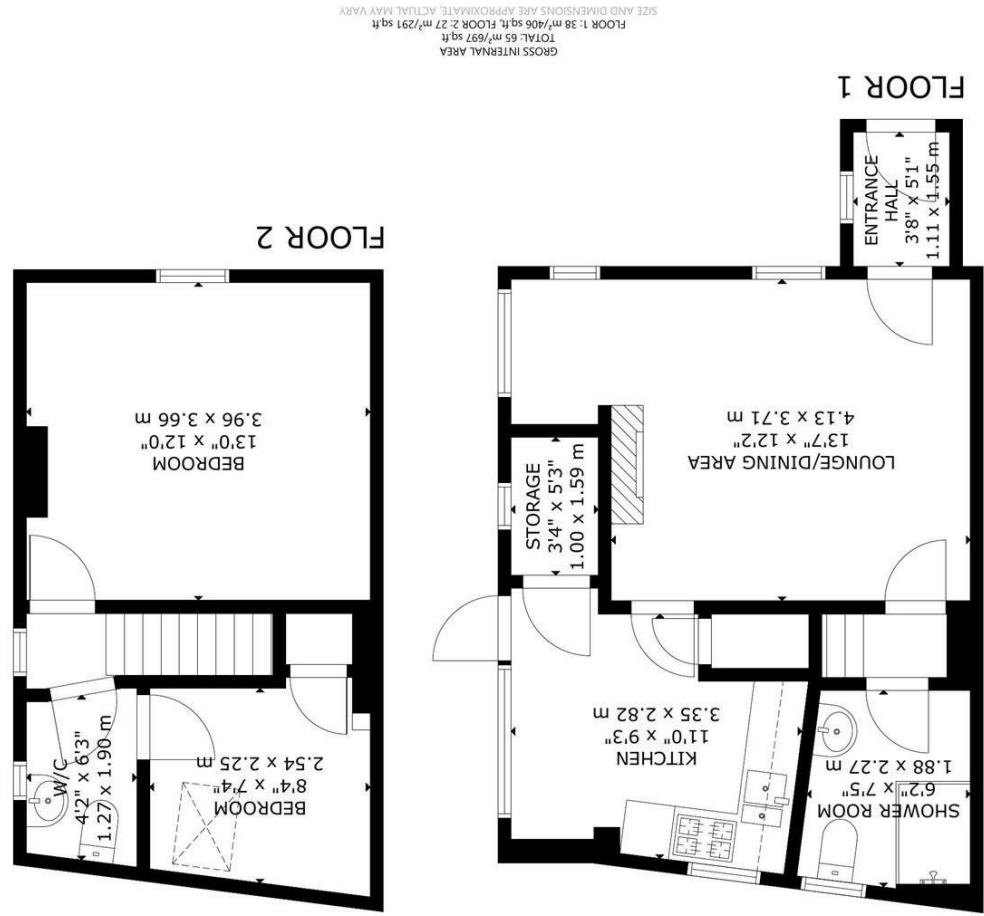
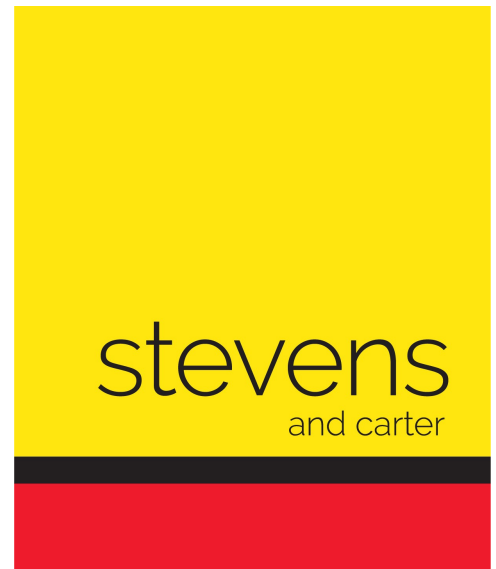


Energy Efficiency Rating	
Current	Potential
Very efficient - lower running costs	
A	A
B	B
C	C
D	D
E	E
F	F
G	G
Not energy efficient - higher running costs	

England & Wales
EU Directive
2002/91/EC



Ersham Road, Hailsham



- 3D Virtual Tour
- Period Semi Detached Cottage
- Beautifully Kept Tiered Gardens
- Lounge/Dining Room
- Walk In Pantry/Store
- Two Bedrooms
- Driveway Parking
- No Onward Chain
- Gas Central Heating
- Viewing Highly Advised



Freehold

£400,000

2 BEDROOM 1 RECEPTION 1 BATHROOM 0 GARAGE

Ersham Road, Hailsham

Ersham Road, Hailsham

DESCRIPTION

3D Virtual Tour | Semi Detached Character Cottage | Lounge/Dining Room | Kitchen | Two Bedrooms | Shower Room/WC | Mature Rear Gardens | No Onward Chain | Viewing Highly Advised |

Stevens and Carter are delighted to bring to the market this charming semi detached period cottage, set on a generous plot and enjoying a beautiful outlook over its own pond.

The accommodation is well arranged, comprising an entrance hall, lounge and a well appointed kitchen complete with a walk in pantry style cupboard.

Upstairs offers two bedrooms, ideal for a small family, first time buyer or those looking to enjoy a more out-of-town setting. The shower room is located on the ground floor and has been updated in recent years.

Outside is where this home really comes into its own. The mature rear garden is a fantastic size and thoughtfully tiered, creating wonderful spaces to relax and entertain. The pond side outlook adds a real sense of character, openness and tranquility.

Further benefits include off road parking for two vehicles and the advantage of no onward chain, making for a straightforward move.

A lovely home with plenty of charm and potential. Viewing comes highly recommended.



Ersham Road, Hailsham

Entrance Hall 1.55m x 1.12m (5'1 x 3'8)

Lounge/Dining Room 4.14m x 3.71m (13'7 x 12'2)

Kitchen 3.35m x 2.82m (11'0 x 9'3)

Storage 1.60m x 1.02m (5'3 x 3'4)

Ground Floor Shower Room/WC 2.26m x 1.88m (7'5 x 6'2)

Stairs To First Floor

Bedroom One 3.96m x 3.66m (13'0 x 12'0)

Bedroom Two 2.54m x 2.24m (8'4 x 7'4)

First Floor WC 1.91m x 1.27m (6'3 x 4'2)

Mature Gardens

Off Road Parking

No Onward Chain