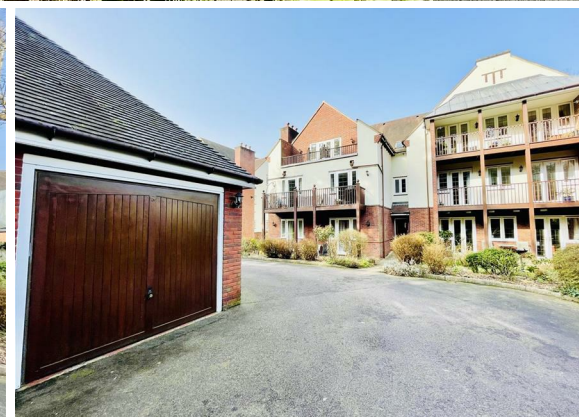
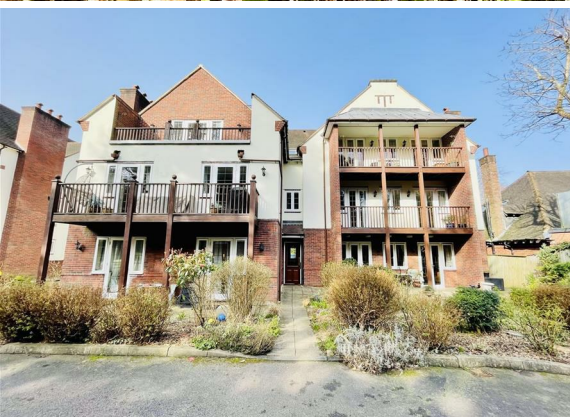




**3 Bed
Apartment
located in**

£2,300 Per Month



CL | **CARTERS
LETTINGS**
IN ASSOCIATION WITH CARTERS CHARTERED SURVEYORS

Second Floor
Approx. 247.1 sq. metres



Total area: approx. 247.1 sq. metres

Whilst every attempt has been made to ensure the accuracy of this floorplan, measurements of doors, windows, rooms and any other items as approximate and no responsibility is taken for any error, omission, or mis-statement. This plan is for illustrative purposes only and should be used as such. The services, systems and appliances, have not been tested and no guarantee as to their operability or efficiency can be given. Plan produced using PlanUp.

Energy Efficiency Rating		
	Current	Potential
Very energy efficient - lower running costs		
(92 plus) A		
(81-91) B		
(69-80) C	77	79
(55-68) D		
(39-54) E		
(21-38) F		
(1-20) G		
Not energy efficient - higher running costs		
EU Directive 2002/91/EC		
England & Wales		

DIRECTIONS

CONTACT

4 Albany Road
Birmingham
West Midlands
B17 9JX

E: lettings@carterssurveyors.co.uk
T: 0121 803 4708
carterssurveyors.co.uk

