

Head Office:
Dixon Kelley Estate Agents
1 Penn Court
Station Road, West Moors
Dorset. BH22 0JJ

Telephone: 01202 877511

DORSET PARK HOMES

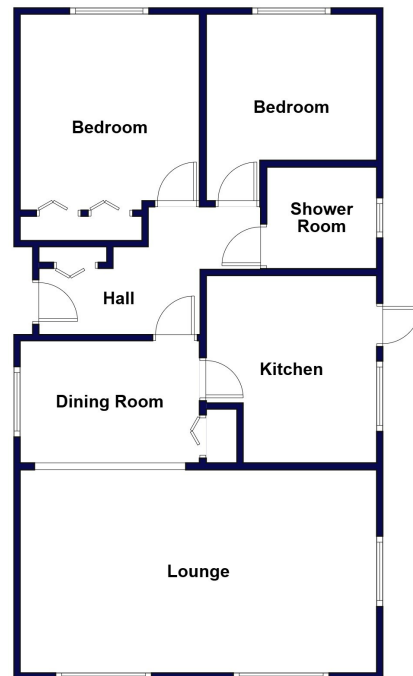
DRAFT

www.dorsetparkhomes.com

26a Oaklands Park, Crossways, Nr Dorchester, Dorset. DT2 8JQ



Well Presented Park Home with Delightful Garden



This drawing has been prepared for diagrammatic purpose only. Not to scale.

2-Bedroom Park Home - approx 36' x 20'

Accommodation & approximate room dimensions:

- Spacious Entrance Hall: Cloaks.
- Lounge: approx 19'5" x 11'2". Feature fireplace. 2 Bay windows.
- Dining Room: approx 10' x 6'8". Cupboard housing combination gas boiler.
- Kitchen: approx 10'3" x 9'4". Range of modern floor & wall cupboards. Cooker space with fitted hood above. Space for fridge & washing machine. Door to side driveway.
- Bedroom 1: approx 12'5" x 9'4" including large built-in wardrobe.
- Bedroom 2: approx 9'4" x 8'
- Shower Room: Modern suite. Large walk-in shower, wash basin & WC.
- Gas Central Heating & Double-Glazing
- Exterior Insulation System
- Chassis Refurbishment 2026
- Delightful Garden with artificial lawn, enjoying a sunny aspect & a high degree of privacy.
- Parking on Plot & GARAGE: approx 22' x 8'
- Age Restriction 50+ Pets considered.
- Popular, well maintained Residential Park near to local amenities.

'Pet Friendly' Park



Kitchen



Large Lounge



Dining Area



Delightful Garden

Pitch Fee: approx £164 per month

Subject to Annual Review

Council Tax Band: 'B'

Tenure: 1983 Mobile Homes Act Agreement

Price: £145,000

VIEWING STRICTLY BY APPOINTMENT WITH THE VENDOR'S AGENT Dorset Park Homes 01202 877511

IMPORTANT NOTE: These particulars are believed to be correct but their accuracy is not guaranteed. They do not form part of any contract. Nothing in these particulars shall be deemed to be a statement that the property is in good structural condition or otherwise, nor that any of the services, appliances, equipment or facilities are in good working order or have been tested. Purchasers should satisfy themselves on such matters prior to purchase Ref.W05224

The recommended specialist in Park Home sales
Proprietor: Simon Dixon

