



The Boulevard, SW6

£981 Per week

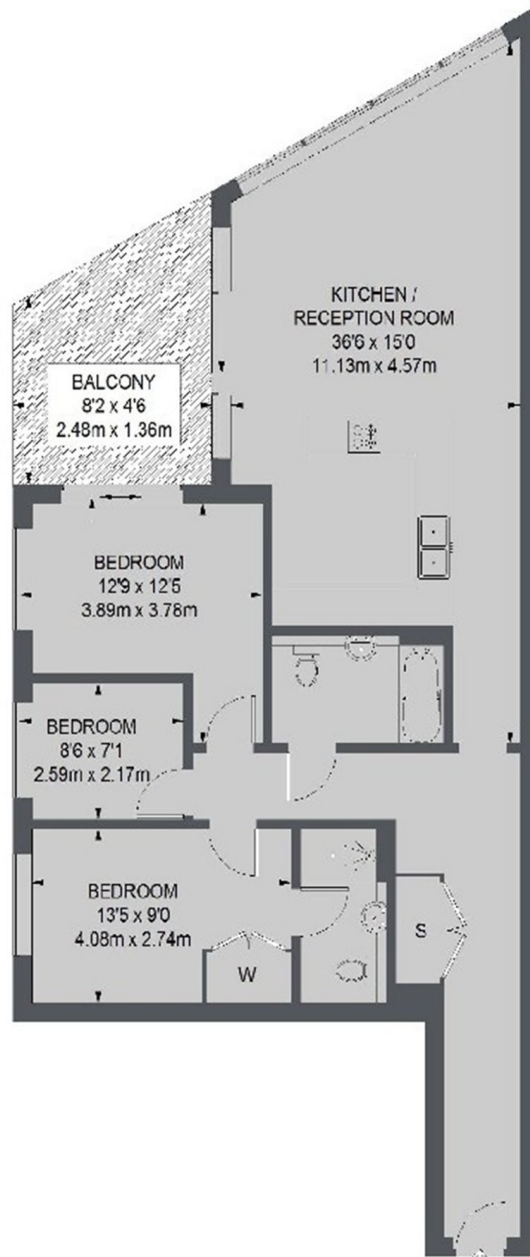
A spacious three double bedroom, two bathroom apartment set within a modern development which benefits from 24 hour concierge.

Imperial Wharf offers a number of excellent restaurants and bars and the river bus service provides direct access to Blackfriars and Putney Piers.

Features

- Three Double Bedroom
- Two Bathrooms
- Unfurnished
- Private Balcony
- Gym
- 24-Hour Concierge

The Boulevard, London, SW6



TOTAL APPROX. FLOOR AREA 1015 SQ. FT. (94.31 SQ. M.)