



## The Avenue, NW6

### £425,000

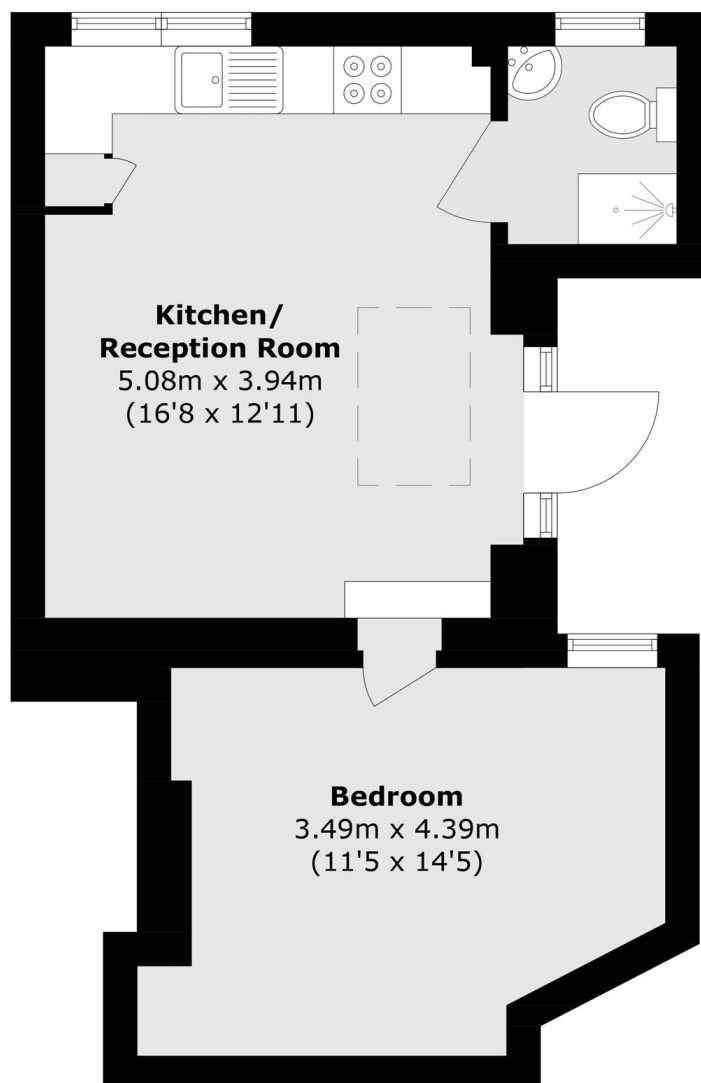
A unique one bedroom ground floor flat with its own entrance and extensive south facing garden. The property has recently undergone significant renovations completed to a high specification, has a share in the freehold, and is available chain-free.

The Avenue is a wide tree-lined residential road in Queen's Park. The property is close to the shops, cafes, bars and restaurants on Salusbury Road. Transport links include Brondesbury Park (Overground) and Queen's Park (Bakerloo & Overground).

### Features

- One Bedroom
- Open Plan Kitchen & Reception
- South Facing Garden
- Own Entrance
- Share of Freehold
- Chain-Free

# The Avenue, London, NW6



Total area (approx.): 40.0 sq. m (430.5 sq. ft)