



BULWARK, CHEPSTOW

Guide price **£285,000**



10 ST DAVIDS CLOSE

Bulwark, Chepstow, Monmouthshire NP16 5JZ



3-bed semi-detached property
Garage and parking
Larger than average Corner plot

A well-presented and generously proportioned semi-detached family home situated within a quiet no-through road in Bulwark. Extended by the previous owners to the ground floor, this spacious property offers versatile living accommodation ideal for family life.

The ground floor comprises an inviting entrance porch leading to a useful WC, a large living room with stairs to the first floor, and access to a formal dining room and a modern family kitchen. The kitchen features side access doors to the garden and garage, making outdoor entertaining and parking straightforward.

Upstairs, the property hosts three bedrooms alongside a family shower room and an additional ground floor WC. Outside, the home benefits from off-road parking and a single garage. The landscaped rear and side gardens are low-maintenance, leading to a charming terraced front garden with a raised area and a lawned lower terrace, perfect for outdoor relaxation.

Located in Bulwark, the property is close to a range of local amenities, including primary schools, shops, and pubs, with further facilities available in nearby Chepstow. Excellent transport links via bus, road, and rail, along with easy access to the A48, M4, and M48 motorways, provide convenient commuting options to Bristol, Cardiff, and Newport.



Guide price
£285,000



KEY FEATURES

- 3-bed Semi Detached property
- Convenient location to Chepstow town
- Sizeable front and rear garden
- Parking for vehicles to the rear



STEP INSIDE



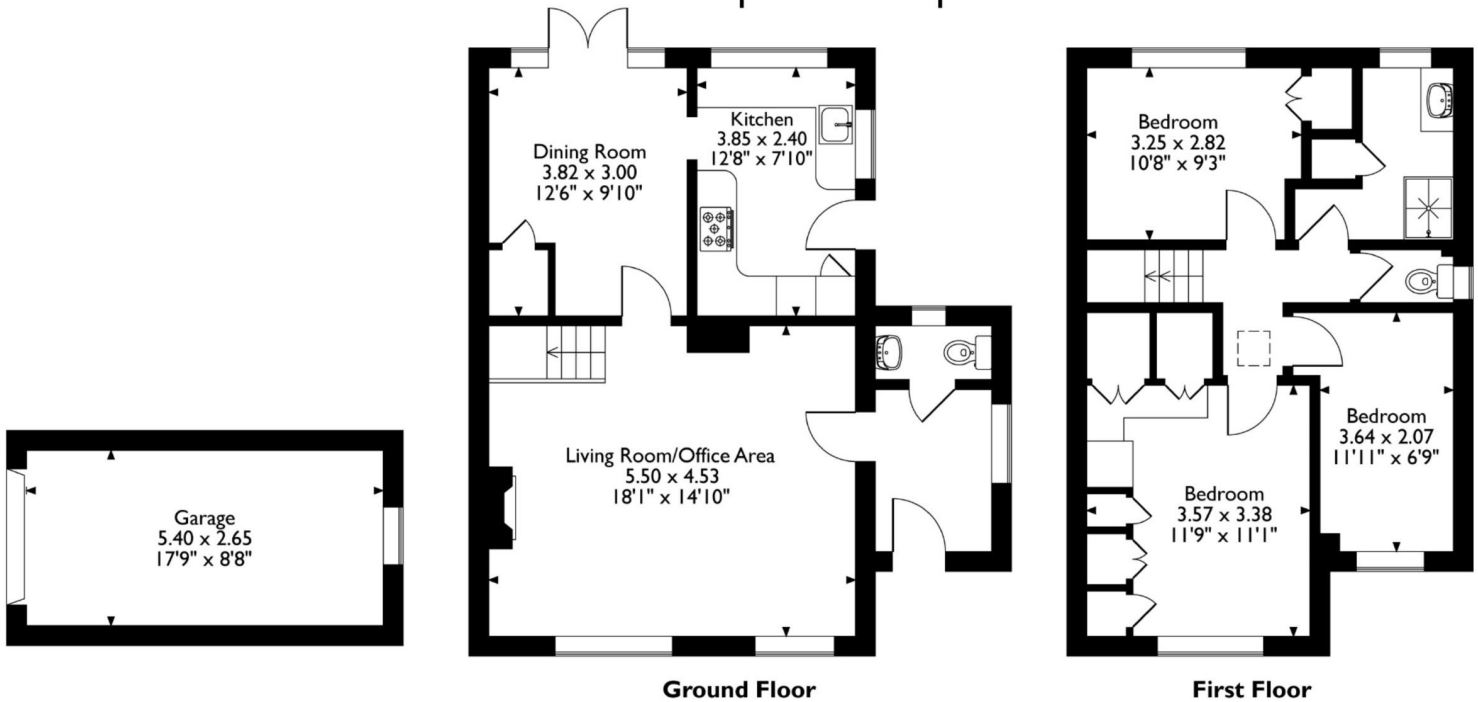
As you step inside the hall, you'll notice that this property is perfect for a growing family.

The ground floor features an inviting entrance hall with a ground floor convenient WC, leading into a spacious lounge complete with a charming feature fireplace surround. A lovely open-plan staircase ascends to the first floor.

From the lounge, you can access the formal dining room, which benefits from French doors opening to the rear garden patio area.

The modern kitchen is well-equipped with ample worktops, a fitted oven and gas hob, and contemporary kitchen units, making it a practical and stylish space for everyday living.

10, St. Davids Close, Bulwark, Chepstow
 Approximate Gross Internal Area
 Main House = 100 Sq M/1076 Sq Ft
 Garage = 14 Sq M/151 Sq Ft
 Total = 140 Sq M/1227 Sq Ft



Ground Floor

First Floor

Please note that the location of doors, windows and other items are approximate and this floorplan is to be used for illustrative purposes only. Unauthorized reproduction is prohibited.

The property is unique and thoughtfully built, offering a warm and welcoming environment.

The property has plenty of potential to suit a variety of needs and lifestyles.

As you ascend to the first floor, you will find three good-sized bedrooms and a family shower room.

STEP OUTSIDE



The property features front pedestrian access only leading to the front garden and entrance, with steps ascending via a pedestrian pathway to the front door. To the rear, the property is approached via a brick-paved driveway with a gate, providing easy access to off-road parking, a low-maintenance rear garden, and a single garage.

INFORMATION

Postcode: NPI 6 5JZ
Tenure: Freehold
Tax Band: D
Heating: Gas
Drainage: Mains
EPC: C





DIRECTIONS

What3words: ///heave.forgets.fabric



Energy Efficiency Rating		Current	Potential
Very energy efficient - lower running costs	A		85
(81-91)	B		
(69-80)	C		70
(55-68)	D		
(39-54)	E		
(21-38)	F		
(1-20)	G		
Not energy efficient - higher running costs			
England & Wales		EU Directive 2002/91/EC	

30 High Street, Chepstow, NP16 5LJ
 01291 626262
 chepstow@archerandco.com
 www.archerandco.com



All measurements are approximate and quoted in imperial with metric equivalents and for general guidance only and whilst every attempt has been made to ensure accuracy, they must not be relied on. The fixtures, fittings and appliances referred to have not been tested and therefore no guarantee can be given that they are in working order. Floorplans and photographs are reproduced for general information and it must not be inferred that any item shown is included with the property.