



14 Leicester Road, Tilton On The Hill

£475,000

RIVA LILY.
POWERED BY
exp UK

hello@rivalily.co.uk | 0116 298 3911
rivalily.co.uk

14 Leicester Road, Tilton On The Hill

A spacious four-bedroom detached home in the desirable village of Tilton on the Hill with newly fitted windows and doors, enjoying far-reaching countryside views to the rear. The property offers a bright open-plan living/dining kitchen with bi-fold doors, an open-plan sitting room with bay window and multi-fuel burner, plus a dining room and downstairs WC. Upstairs are four bedrooms with built-in storage, an en-suite to the main bedroom and a modern family bathroom.

Outside, the home features a gated gravel driveway, garage with electric doors and a generous south-facing rear garden with patio, mature planting and a summerhouse ideal as a garden office. The property also benefits from south-facing solar panels providing electricity.



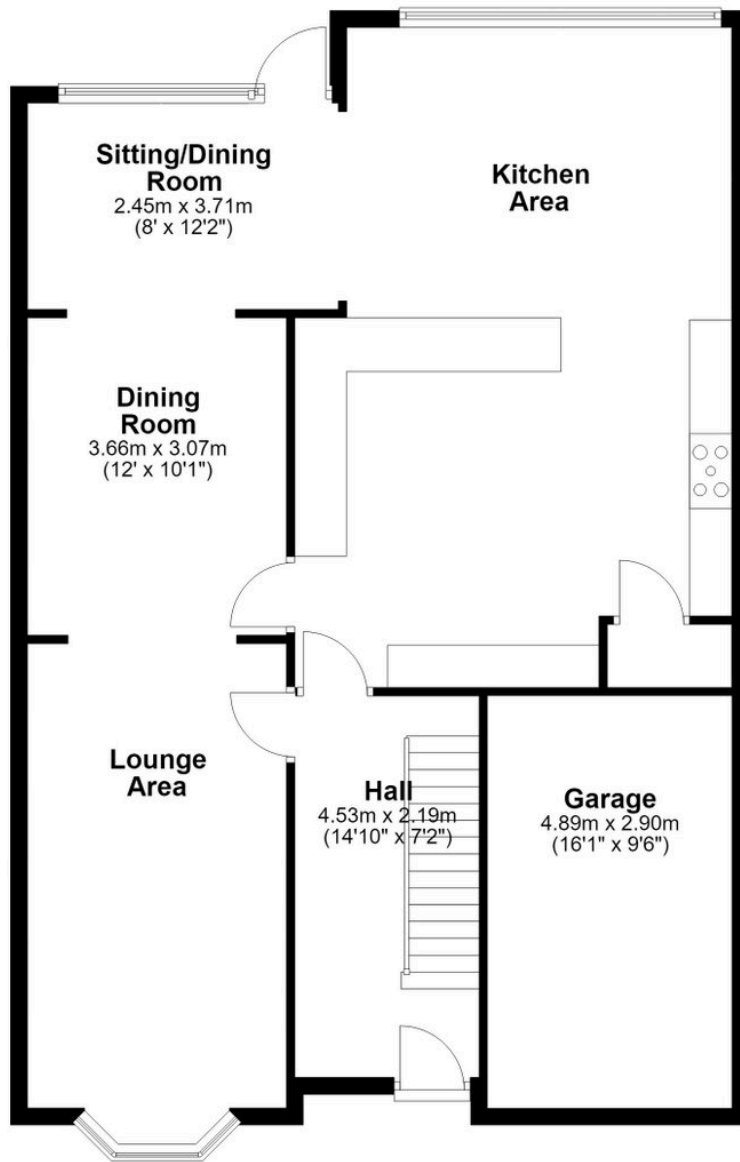






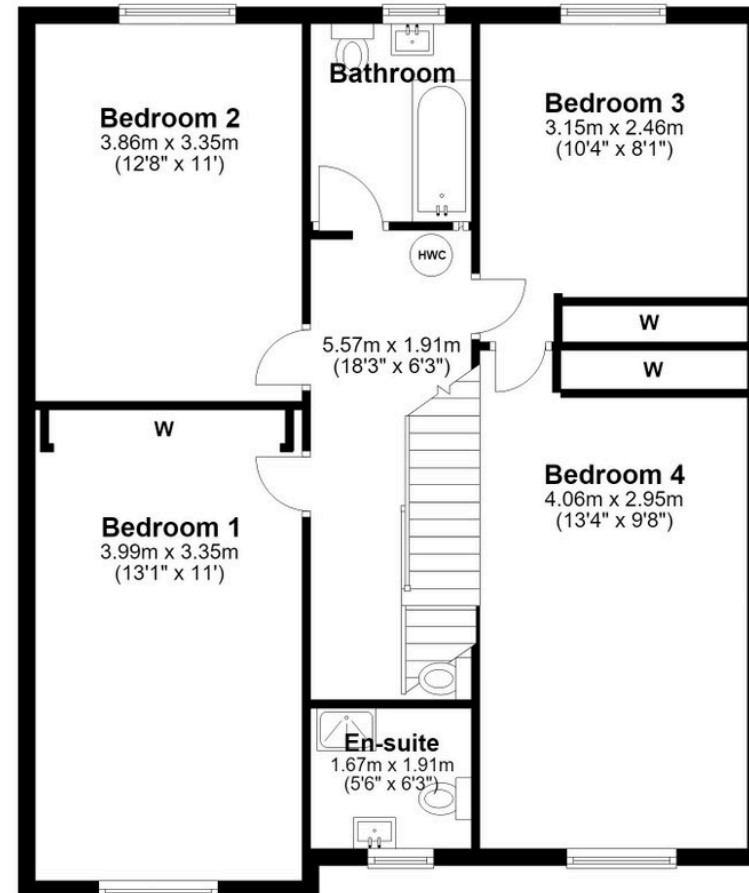
Ground Floor

Approx. 102.8 sq. metres (1106.6 sq. feet)



First Floor

Approx. 67.3 sq. metres (724.5 sq. feet)



Total area: approx. 170.1 sq. metres (1831.1 sq. feet)