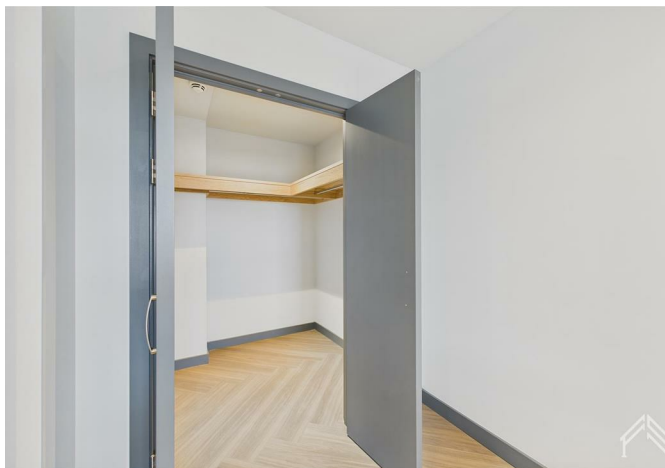


5432534 Luna, Marley Street, Wembley, HA9 0YG
£2,219





5432534 Luna, Marley Street, Wembley, HA9 0YG

£2,219

New Offer - 16% off your rent. A Greener, Smarter Way to Live in Wembley Park. High-spec Apartment · Gym · 24h Concierge · Ultrafast Wifi · Desk Space · Lounge · Landscaped Gardens · Roof Terrace with BBQ · 12 min to Central London. You could be the first to live here!

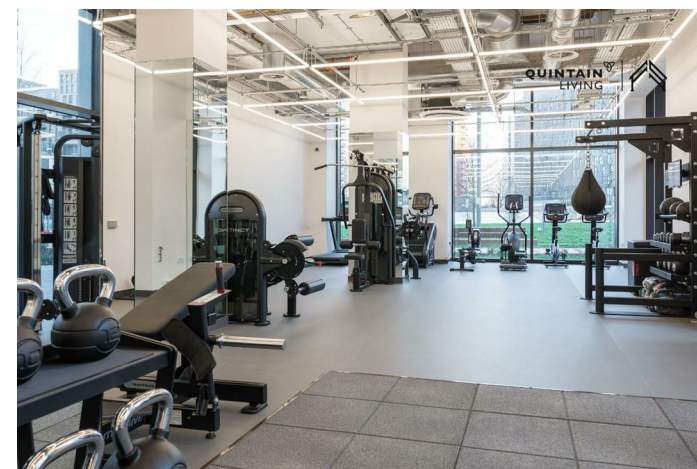
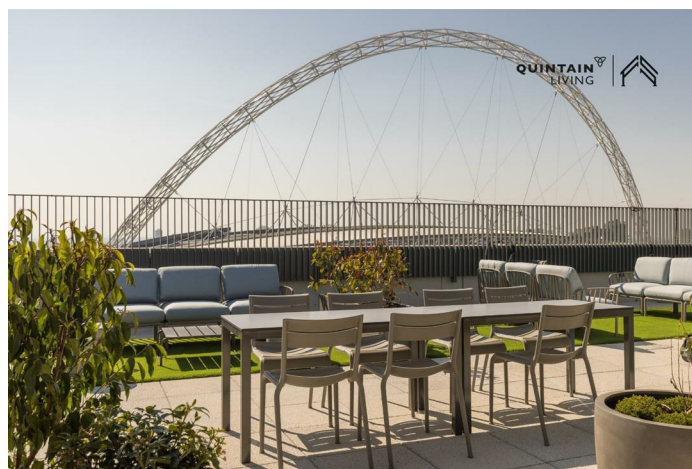
Set within Luna, Wembley Park's standout address, this premium apartment has been expertly upgraded by our in-house design team. The interiors are ultra-modern, combining deep, cool tones, rich textures, and subtle geometric patterns to create a sophisticated, moody aesthetic that feels both bold and refined.

Wembley Park, one of London's most exciting new districts - home to Bread Ahead, Boxpark, Troubadour Theatre and the London Designer Outlet (around 70 shops, cafés and restaurants plus a nine-screen Cineworld). OVO Arena Wembley, Wembley Stadium and the tube are within a short walk, putting Central London about 12 minutes away via the Jubilee and Metropolitan lines. Trains from Wembley Stadium reach. Managed by Quintain Living, the award-winning team behind Wembley Park. Photos show a very similar apartment in this building however the exact layout/floor/view may vary. Other incentives available T&Cs apply; see Quintain Living website for details.

Description



Situation

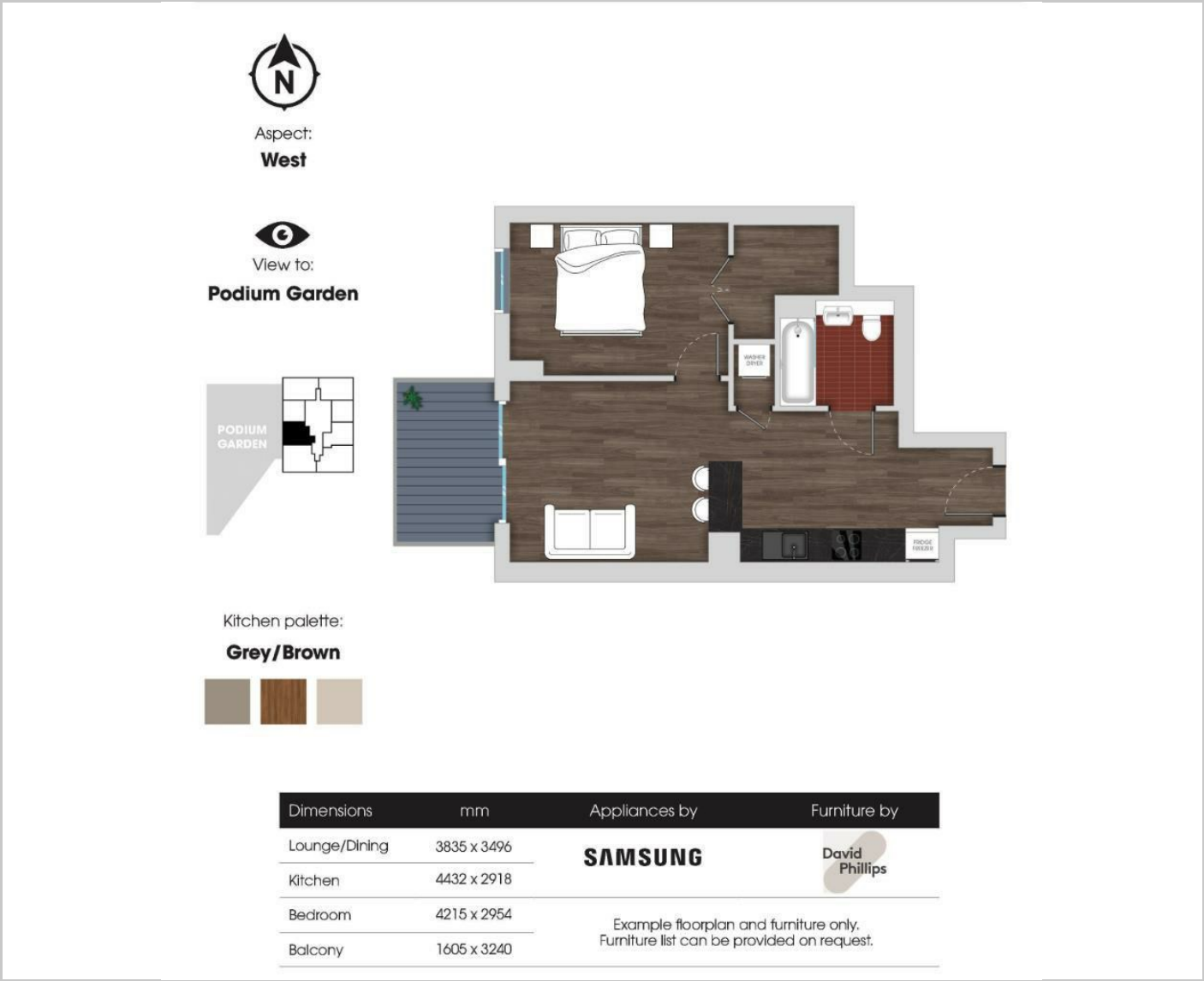


Furnished

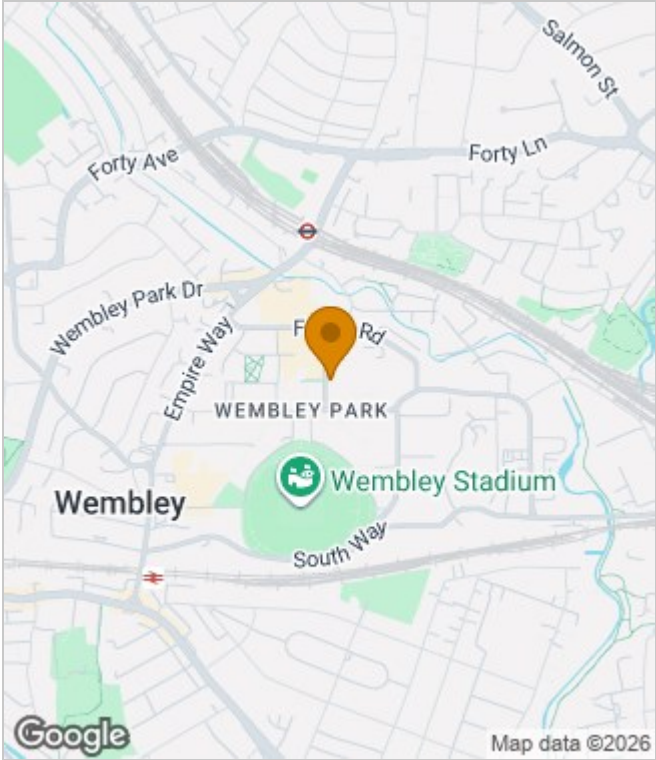
Council Tax Band: C

Available:

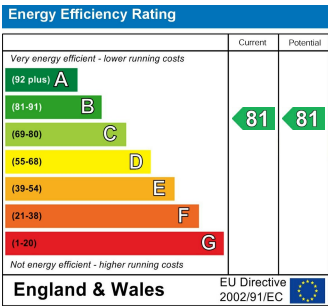
Floor Plans



Area Map



Energy Performance Graph



These particulars, whilst believed to be accurate are set out as a general outline only for guidance and do not constitute any part of an offer or contract. Intending purchasers should not rely on them as statements of representation of fact, but must satisfy themselves by inspection or otherwise as to their accuracy. No person in this firms employment has the authority to make or give any representation or warranty in respect of the property.