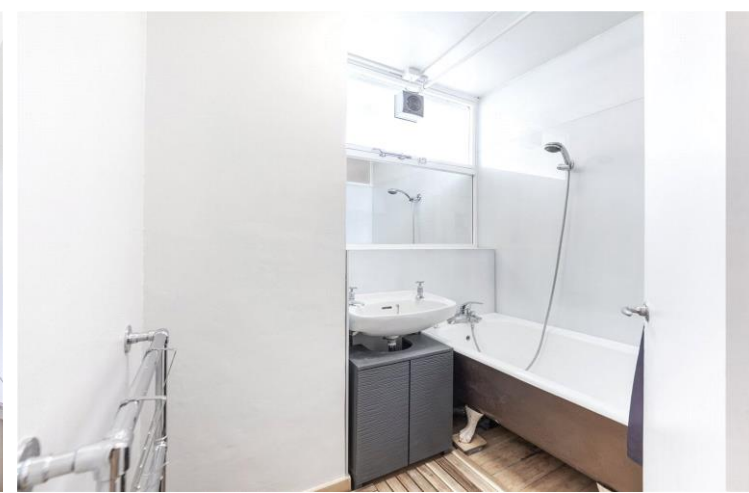




Bramwell House  
Churchill Gardens, SW1V

CHESTERTONS





This two double bedrooms are nearly equal in size, with bathroom and separate W.C. The property further benefits a bright reception with a balcony and kitchen. Heating and hot water included in rent.

- 2 Bedrooms
- Heating and hot water included in rent
- Balcony

### £2,500 pcm

Additional tenant charges apply (fees apply to non-AST tenancies only)

Tenancy Agreement Fee: £300

References per Tenant/Guarantor: £60

Inventory check (approx. £100 – £250 inc. VAT)

[chestertons.co.uk/property-to-rent/applicable-fees](http://chestertons.co.uk/property-to-rent/applicable-fees)

Energy Efficiency Rating		Current	Potential
90-100	A		
81-89	B		
72-80	C	78	80
63-71	D		
54-62	E		
45-53	F		
35-44	G		

Not energy efficient - higher running costs

England, Scotland & Wales EU Directive 2002/91/EC

**Minimum Term:** 6 months  
**Deposit Required:** 5 weeks  
**Local Authority:** Westminster  
**Council Tax Band:** C  
**EPC Rating:** C  
**Furnished**

*Chestertons Westminster & Pimlico Lettings*

105 Wilton Road  
London  
SW1V 1DZ

[westminsterlettingsusers@chestertons.co.uk](mailto:westminsterlettingsusers@chestertons.co.uk)  
02030408220  
[chestertons.co.uk](http://chestertons.co.uk)

Chesterton UK Services Limited trading as Chestertons for themselves and for the vendor of this property whose agents they are, give notice that (i) these particulars do not constitute any part of an offer or contract, (ii) all statements contained within these particulars are made without responsibility on the part of Chestertons or the vendor, (iii) whilst made in good faith, none of the statements contained within these particulars are to be relied upon as a statement or representation of fact, (iv) any intending purchasers must satisfy themselves by inspection or otherwise as to the correctness of each of the statements contained within these particulars, (v) the vendor does not make or give either Chestertons or any person in their employment any authority to make or give representation or warranty whatsoever in relation to this property. Wide angle lenses may be used. ©Copyright Chestertons | Chesterton Global Ltd | Registered Office 40 Connaught Street, Hyde Park, London W2 2AB Registered Company Number 05334580.



This paper is  
100% recyclable