



dm^g
DAVID MARTIN
GROUP

Chapel Road
Tiptree, CO5 0RD

£550,000
EPC Rating 'TBC'

- Detached Three Bedroom Bungalow
- Refurbished Throughout
- Open Plan Living
- Chain Free





Property Description

We are delighted to present this beautifully refurbished and extended three-bedroom detached bungalow, ideally situated in the heart of Tiptree village and offered with the benefit of no onward chain. Thoughtfully improved by the current owners, the property offers spacious, versatile accommodation, including a generous lounge, three double bedrooms, with the principal bedroom benefiting from an en-suite, a stylish four-piece family bathroom, and a stunning open-plan kitchen, dining and living area, designed for modern family living and entertaining. Externally, the property benefits from a driveway providing ample off-road parking and a low-maintenance rear garden. A substantial outbuilding further enhances the home's appeal, offering potential for use as a home office, gym, studio or garden room, subject to any necessary consents. Combining contemporary style, generous living space and a desirable village location, this exceptional bungalow is suited to a wide range of buyers.



ENTRANCE HALL

Enter Via UPVC door into welcoming entrance hall, storage cupboard.

LOUNGE

16' 06" x 13' 05" (5.03m x 4.09m) Spacious yet cosy living room, beautifully lit by two front-aspect windows and an additional side-aspect window, allowing plenty of natural light throughout. Features include a log burner and newly laid carpet.

OPEN PLAN KITCHEN/DINING/LIVING SPACE

21' 00" x 16' 09" (6.4m x 5.11m) The extended section of the bungalow boasts a vast open-plan kitchen and dining area, featuring a beautiful shaker-style kitchen fitted with a range of wall and base units, along with a central island. Integrated appliances include a fridge/freezer, dishwasher, and double oven. Flooded with natural light, this impressive space benefits from a large skylight lantern, a rear-aspect window, and three-panel bifold doors opening out onto the rear garden.



UTILITY ROOM

Space for washing machine and tumble dryer, window to side aspect.



BEDROOM ONE

12' 07" x 10' 00" (3.84m x 3.05m) Window to side aspect, newly laid carpet, door to;

ENSUITE

Half tiled suite, comprising of a single shower cubical, wash hand basin inset to vanity unit and low level WC.

BEDROOM TWO

18' 11" x 7' 03" (5.77m x 2.21m) Window to front aspect, newly laid carpet.

BEDROOM THREE

11' 11" x 8' 11" (3.63m x 2.72m) Window to side aspect, newly laid carpet.



BATHROOM

A stunning four-piece bathroom suite featuring tiled flooring and half-tiled walls. The suite comprises a separate shower cubicle, wash hand basin inset into a vanity unit, panelled bath, low-level WC, and heated towel rail. An obscure-glazed side-aspect window provides natural light and privacy.



OUTSIDE

To the front of the property is a generously sized gravel driveway providing ample off-road parking, with side access to the left-hand side of the property leading through to the rear garden.

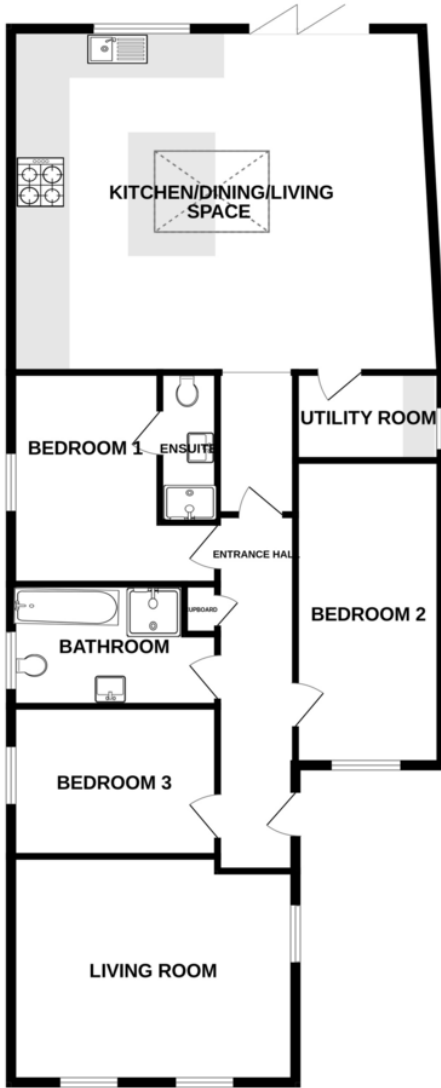
REAR GARDEN

The rear garden has been designed with low maintenance in mind and features a patio seating area, a small lawned section, and shingled borders. The entire boundary has recently been enclosed with new fence panels. To the rear of the garden is a substantial outbuilding measuring approximately 23'03" x 13'06", offering excellent potential for use as a home office, gym, or additional storage space. The outbuilding benefits from power and lighting, along with UPVC double doors





GROUND FLOOR



Whilst every attempt has been made to ensure the accuracy of the floorplan contained here, measurements of doors, windows, rooms and any other items are approximate and no responsibility is taken for any error, omission or mis-statement. This plan is for illustrative purposes only and should be used as such by any prospective purchaser. The services, systems and appliances shown have not been tested and no guarantee as to their operability or efficiency can be given.
Made with Metropix ©2026



David Martin
35a Church Road
Tiptree
Colchester
Essex

www.davidmartin.co.uk
tiptree@dmgtiptree.co.uk
01621 815815

Agents Note: Whilst every care has been taken to prepare these sales particulars, they are for guidance purposes only. All measurements are approximate and for general guidance purposes only and whilst every care has been taken to ensure their accuracy, they should not be relied upon and potential buyers are advised to recheck the measurements