



# West India Quay

E14

Guide Price £525,000

A stunning 2 bedroom high-floor apartment set within the iconic West India Quay development in the heart of Canary Wharf.

**CHESTERTONS**



# West India Quay

E14

- 2 Bedrooms | 2 Bathrooms
- Allocated Under Block Parking Included
- Exceptional views
- 1370 sq. ft of Internal Living Space



A stunning high-floor apartment set within the iconic West India Quay development in the heart of Canary Wharf. This beautifully presented property features floor-to-ceiling windows with amazing panoramic views across the London skyline, a bright and spacious open-plan living area, and a sleek modern kitchen complete with integrated appliances and a central island — perfect for entertaining.

Finished to a high contemporary standard throughout, the apartment offers two generous bedrooms, two stylish bathrooms, and excellent storage. Residents benefit from 24-hour concierge, secure entry and lift access, all just moments from Canary Wharf station providing access to the Jubilee line, Elizabeth line and Docklands Light Railway.

This property is for sale by the Modern Method of Auction, meaning the buyer and seller are to Complete within 56 days (the "Reservation Period"). Interested parties personal data will be shared with the Auctioneer (iamsold).

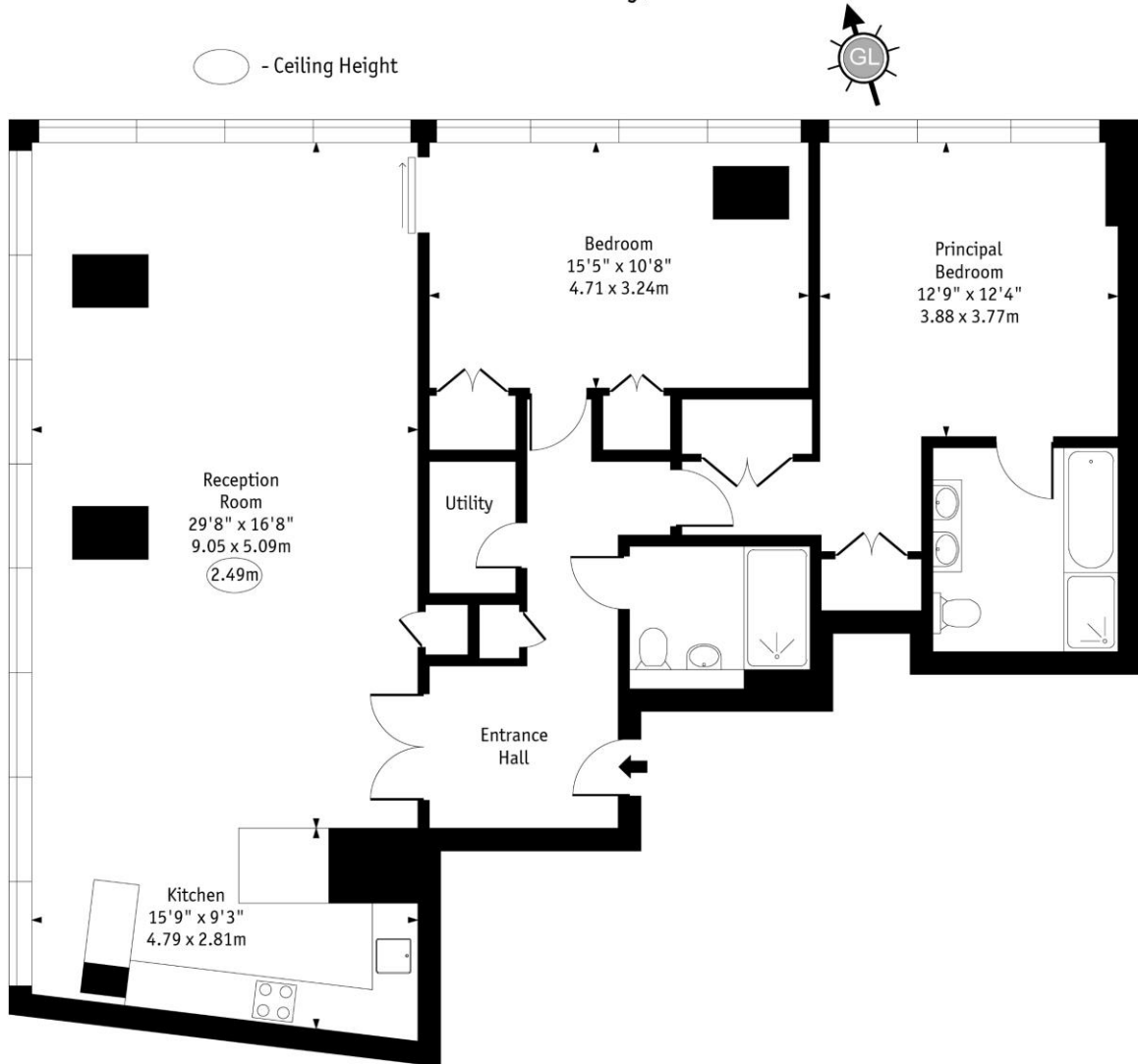
**Tenure:** Leasehold 977 years  
**Service Charge:** £16,000 pa approx.  
**Ground Rent:** £500 pa  
**Local Authority:** Tower Hamlets  
**Council Tax Band:** F

Score	Energy rating	Current	Potential
92+	A		
81-91	B		
69-80	C	73 C	73 C
55-68	D		
39-54	E		
21-38	F		
1-20	G		

### *Chestertons Canary Wharf & Greenwich Sales*

Harbour Island  
 28 Harbour Exchange Square  
 London  
 E14 9GE  
 canarywharf@chestertons.co.uk  
 020 7510 8300  
 chestertons.co.uk

# West India Quay, E14



## Twenty First Floor

Approx Gross Internal Area 1370 Sq Ft - 127.33 Sq M

Every attempt has been made to ensure the accuracy of the floor plan shown. However, all measurements, fixtures, fittings, and data shown are approximate interpretations and for illustrative purposes only. Measured according to the RICS. Not To Scale.  
[www.goldlens.co.uk](http://www.goldlens.co.uk)  
Ref. No. 030719WiH