



79 Ashley Road, Altrincham

£800,000 Freehold

No onward chain. Three bed detached home near Hale Village and top schools. Three receptions, loft room, large garden, garage, driveway. Potential to extend (STPP). Viewing recommended.

Council Tax band: F

Tenure: Freehold

EPC Energy Efficiency Rating:

EPC Environmental Impact Rating:



**HIBBERT
HOMES**

SALES & LETTINGS

NO ONWARD CHAIN

This three bedroom DETACHED home resents a superb opportunity for families and buyers seeking a spacious and versatile home within walking distance to the vibrant amenities and renowned eateries of Hale Village, the property also falls within the catchment area for excellent local schools, making it a perfect choice for families. This property is ideal to put your own stamp on with potential to extend subject to planning permission. The property comprises; A spacious entrance hall, three reception rooms, downstairs W/C and to the back of the property the kitchen which leads out into the garden. The first floor there is a landing leading to three bedrooms and the family bathroom, There is a second stairs case which leads in to the loft room. Externally to the front of the property there is a driveway and to the rear of the property there is a large rear garden and a garage, providing excellent storage. A viewing is highly recommended to truly appreciate the properties potential.

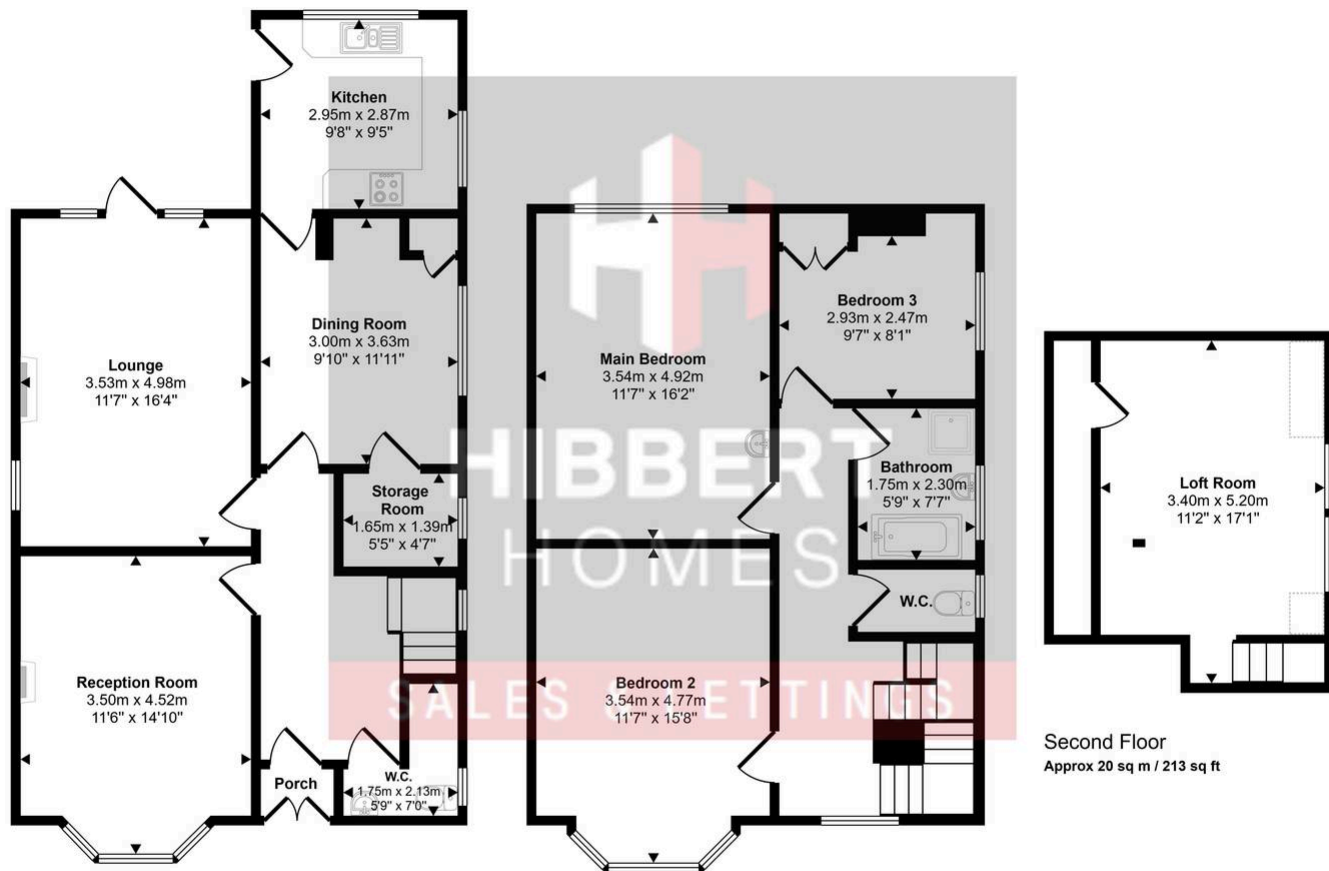


- No Onward Chain
- Walking Distance To Hale Village
- Ideal Situated Within Catchment For Local Schools
- Spacious Three Bedroom Detached Home
- Three Reception Rooms
- Ideal Home To Put Your Own Stamp On
- Generous Plot
- Large Rear Garden With A Garage





Approx Gross Internal Area
153 sq m / 1643 sq ft



Denotes head height below 1.5m

This floorplan is only for illustrative purposes and is not to scale. Measurements of rooms, doors, windows, and any items are approximate and no responsibility is taken for any error, omission or mis-statement. Icons of items such as bathroom suites are representations only and may not look like the real items. Made with Made Snappy 360.

