



9 St Edmund Close

Gorleston-on-Sea, Great Yarmouth, NR31 7NE

Offers Over £185,000



3



2



2



C

9 St Edmund Close

Gorleston-on-Sea, Great Yarmouth, NR31 7NE

An extended mid terraced 3 bedroom home with a study and a ground floor shower room. The property is pleasantly situated in a cul-de-sac with off road parking.

Entrance Area

UPVC entrance door with double glazed panels. Mat flooring. Stairs to landing. UPVC double glazed window to front aspect

Kitchen/Dining/Family Room

17'10" x 12'6" max, 6'1" min plus 9'0" x 8'1" (5.44m x 3.81m max, 1.85m min plus 2.74m x 2.46m)

Worktops with cupboards and drawers below and a stainless steel single drainer sink with mixer tap. Tiled splashbacks. Matching wall cupboards. Built-in electric oven (not working). Four ring electric hob with a stainless steel extractor above. Utility space below worktop with plumbing for washing machine and space for refrigerator. Understairs storage cupboard. Two radiators. Dado rail. Aluminium frame double glazed sliding patio door to a paved patio and the rear garden.

Lounge

17'7" x 12'9" max, 10'4" (5.36m x 3.89m max, 3.15m)

Radiator. UPVC double glazed window to front aspect. Opening through to study.

Study

9'1" x 8'1" (2.77m x 2.46m)

Radiator. UPVC double glazed window to rear aspect.

Shower Room

8'1" x 2'4" (2.46m x 0.71m)

Tiled shower cubicle with an electric shower unit. WC. Part tiled walls. Extractor fan. UPVC double glazed window to rear.

First Floor

Landing

Small loft inspection hatch.

Bedroom 1

11'0" to wardrobe front x 9'1" (3.35m to wardrobe front x 2.77m)

Radiator. Built-in wardrobe along one wall with two floor sliding mirror doors. Built-in shelved over stairs storage cupboard. UPVC double glazed window to front aspect.





Bedroom 2 10'3" x 8'2" (3.12m x 2.49m)

Radiator. UPVC double glazed window to rear aspect.

Bedroom 3 12'6" x 6'5" (3.81m x 1.96m)

Radiator. UPVC double glazed window to front aspect.

Bathroom 8'11" x 4'10" (2.72m x 1.47m)

White suite comprising panelled bath with tiled surround and an electric shower unit above. Pedestal wash basin. WC. Part tongue and groove boarding to walls. Large chrome towel radiator. UPVC double glazed window to rear aspect. Built-in cupboard with a wall mounted gas fired combination boiler.

Outside

A driveway provides parking for one vehicle and there is scope to create further space. The rear garden is enclosed with a paved patio spanning the width of the property. Timber built shed.

Tenure

Freehold.

Services

Mains water, gas, electricity and drainage are connected.

Council Tax

Great Yarmouth Borough Council - Band A

Location

Gorleston-on-Sea is a coastal town 2 miles from Great Yarmouth centre and has a varied selection of local shops * Golf Course * Modern District hospital * Schools for all ages * Library * Regular bus services to the main shopping areas and a sandy beach.

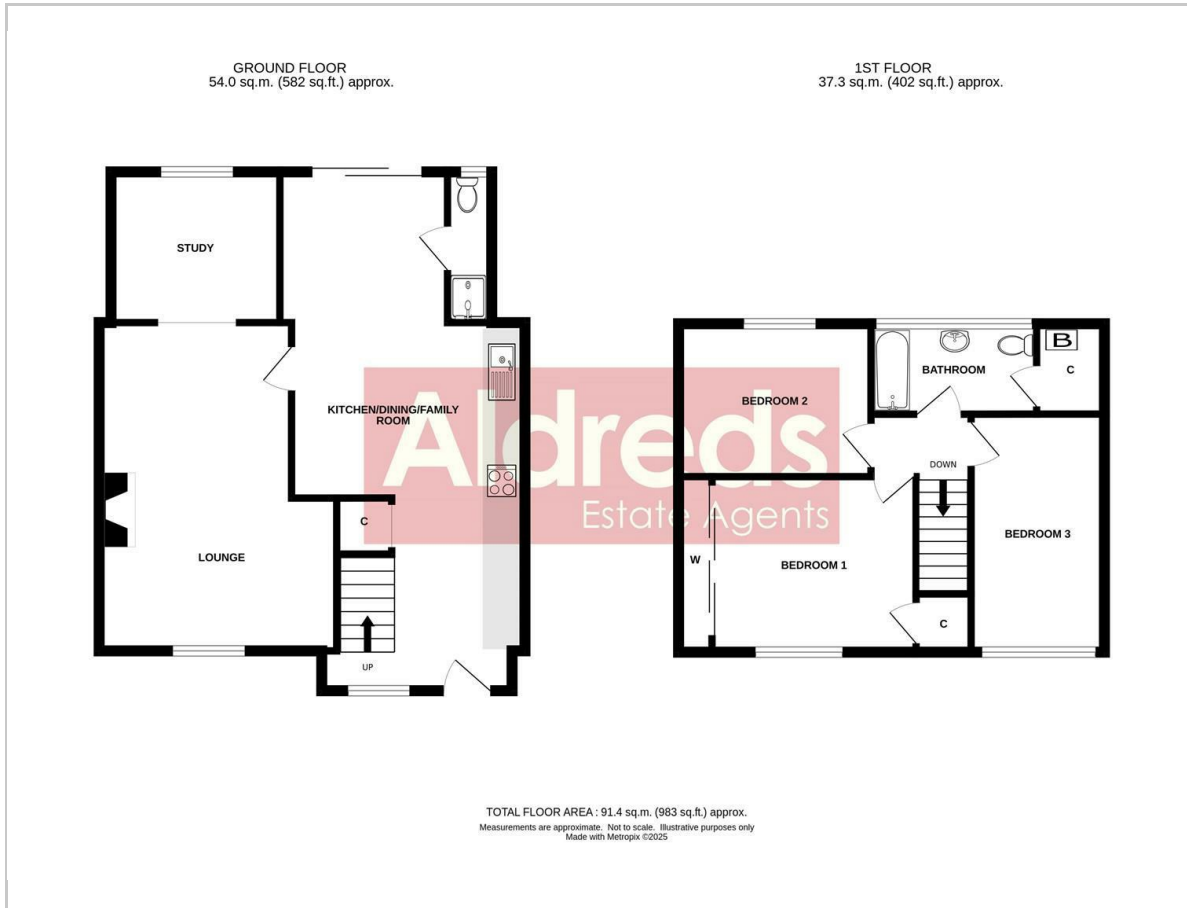
what3words

///crunching.person.bronzes

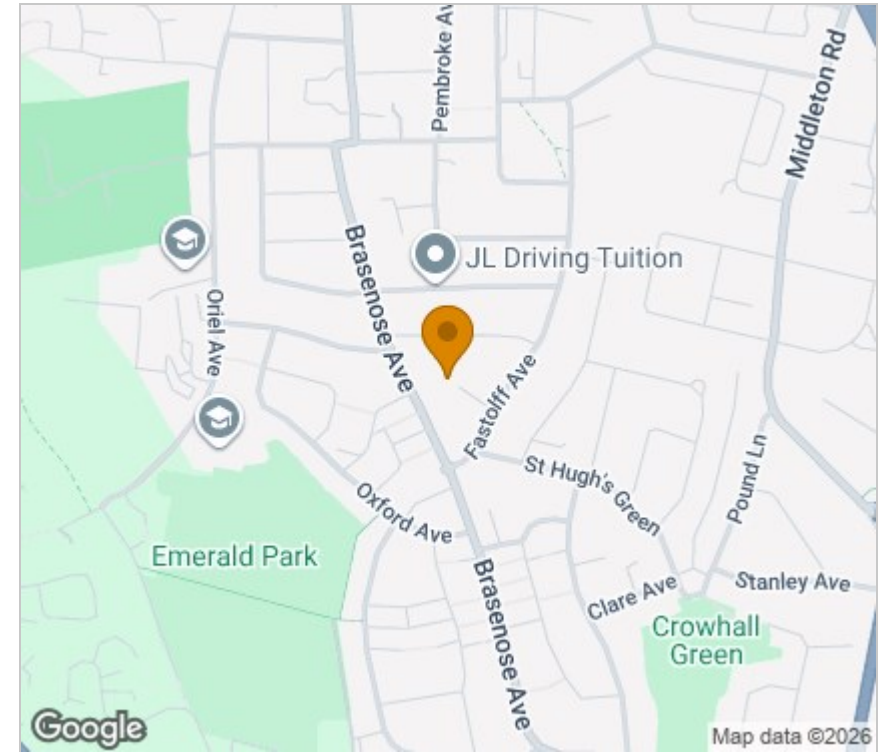
Ref: G18421/12/25



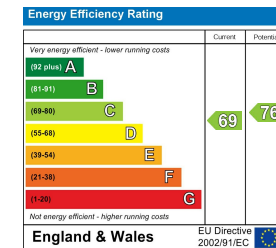
Floor Plan



Area Map



Energy Efficiency Graph



Viewing

Please contact our Aldreds Gorleston Office on 01493 664600 if you wish to arrange a viewing appointment for this property or require further information.

Disclaimer

These particulars are issued on an understanding that all negotiations shall be conducted through Messrs. Aldreds. Please note: Messrs. Aldreds for themselves and for the vendors or lessors of this property whose agents they are given notice that: 1. Particulars are set out as a general outline only for guidance of intending purchasers or lessees, and do not constitute nor constitute part of, an offer or contract. 2. All descriptions, dimensions, references to condition and necessary permissions for use and occupation, and other details are given without responsibility and any intending purchasers or tenants should not rely on them as statements or representations of fact but must satisfy themselves by inspection or otherwise as to the correctness of each of them. 3. No person in the employment of Messrs. Aldreds has any authority to make or give any representation or warranty whatever in relation to this property. 4. If you are proposing to visit the property and are travelling some distance please check with Aldreds on the issue of availability prior to travelling. 5. Aldreds Property Consultants and associated services may offer additional services to the prospective purchaser for which they will be entitled to receive a commission.

Aldreds are pleased to be working with Mortgage Advice Bureau. They're an award-winning mortgage broker with over 1,400 advisers across the UK, and have access to over 12,000 mortgage products from over 90 lenders. Aldreds Estate Agents Ltd receive a commission of £200 on each completed case. Your home may be repossessed if you do not keep up repayments on your mortgage. There may be a fee for mortgage advice. The actual amount you pay will depend upon your circumstances. The fee is up to 1%, but a typical fee is 0.3% of the amount borrowed. Mortgage Advice Bureau is a trading name of Mortgage Seeker Limited which is an appointed representative of Mortgage Advice Bureau Limited and Mortgage Advice Bureau (Derby) Limited which are authorised and regulated by the Financial Conduct Authority. Mortgage Seeker Limited Registered Office: Lovewell Blake, Sixty Six North Quay, Great Yarmouth, Norfolk, NR30 1HE. Registered in England Number: 03721415. 6. Potential purchasers should check with their providers that the broadband and mobile phone coverage they would require is available.

149 High Street, Gorleston, Norfolk, NR31 6RB

Tel: 01493 664600 Email: gorleston@aldreds.co.uk <https://www.aldreds.co.uk/>

Registered in England Reg. No. 08945751 Registered Office: 17 Hall Quay, Great Yarmouth, Norfolk NR30 1HJ

Directors: Mark Duffield B.S.c. FRICS. Dan Crawley MNAEA Paul Lambert MNAEA