



**Connells**

Old School Mews  
Shrewton Salisbury



# Old School Mews Shrewton Salisbury SP3 4FA

for sale  
**£270,000**



## Property Description

A freehold house conversion of an old school situated within a tiny exclusive development of differing properties within the heart of this delightful village. The property is beautifully presented and is an absolute must for viewing. The A303 is just minutes away and the property would make an ideal, low maintenance property to live in or a second home from home.

### Entrance Hall

Timber door with arched leaded window, built in cloaks cupboard and storage cupboard, further built in utility cupboard with hot water tank, shelving and space for concealed washing machine

### Cloakroom

Comprising a WC, pedestal wash hand basin, heated chrome towel rail, downlighter spot

### Lounge

Box bay window to front aspect.

### Kitchen/ Dining Room

Comprising a single drainer double bowl sink unit with mixer taps, range of wall and base units with roll top work surfaces, built in oven, inset hob unit with glass and steel hood over, built in and concealed dishwasher, built in and concealed fridge and freezer, underlighting,

downlighter spots, box bay window to front aspect.

### Dining Area

Stairs to first floor galleried landing.

### Galleried Landing

Exposed beam, display shelf, ceiling window, access to loft space.

### Master Bedroom

Angled ceiling with feature arched window to front aspect with attractive view over a green and with further Velux-style window, built in double wardrobe, exposed beams, further built in storage cupboard with shelving.

### Ensuite

Comprising a shower cubicle with pedestal wash hand basin and WC, heated chrome towel rail downlighter spots.

### Bedroom Two

Angled ceiling with feature arched window to front aspect with attractive view over a green and with further Velux style window, built in double wardrobe, further built single wardrobe, exposed beams,

### Bathroom

Comprising a panel enclosed bath with mixer taps and shower attachment, pedestal wash hand basin, WC, heated chrome towel rail, downlighter spots, display niche, beams.

## Outside

### Allocated Parking

Located directly opposite with further visitor parking.





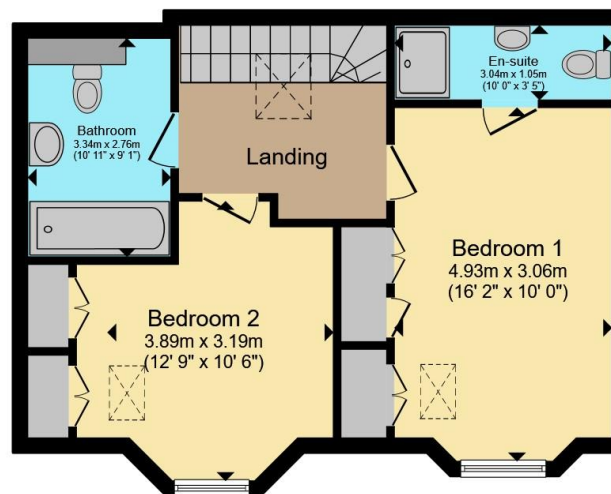








**Ground Floor**



**First Floor**

Total floor area 95.3 m<sup>2</sup> (1,025 sq.ft.) approx

This floor plan is for illustrative purposes only. It is not drawn to scale. Any measurements, floor areas (including any total floor area), openings and orientation are approximate. No details are guaranteed, they cannot be relied upon for any purpose and they do not form part of any agreement. No liability is taken for any error, omission or misstatement. A party must rely upon its own inspection(s). Powered by [www.propertybox.io](http://www.propertybox.io)

**Connells**

To view this property please contact Connells on

**T 01980 622 662**

**E [amesbury@connells.co.uk](mailto:amesbury@connells.co.uk)**

Unit 3 23 Salisbury Street AMESBURY  
SALISBURY SP4 7AW

EPC Rating: D Council Tax  
Band: C

Tenure: Freehold

**view this property online [connells.co.uk/Property/ABY308521](http://connells.co.uk/Property/ABY308521)**



1. MONEY LAUNDERING REGULATIONS Intending purchasers will be asked to produce identification documentation at a later stage and we would ask for your co-operation in order that there will be no delay in agreeing the sale. 2. These particulars do not constitute part or all of an offer or contract. 3. The measurements indicated are supplied for guidance only and as such must be considered incorrect. Potential buyers are advised to recheck measurements before committing to any expense. 4. We have not tested any apparatus, equipment, fixtures, fittings or services and it is in the buyers interest to check the working condition of any appliances.

Connells Residential is registered in England and Wales under company number 1489613, Registered Office is Cumbria House, 16-20 Hockliffe Street, Leighton Buzzard, Bedfordshire, LU7 1GN. VAT Registration Number is 500 2481 05.

**See all our properties at [www.connells.co.uk](http://www.connells.co.uk) | [www.rightmove.co.uk](http://www.rightmove.co.uk) | [www.zoopla.co.uk](http://www.zoopla.co.uk)**

Property Ref: ABY308521 - 0006