

To let

COMMERCIAL



**3367sqft Lower
Ground commercial
space situated on
Collent Street**

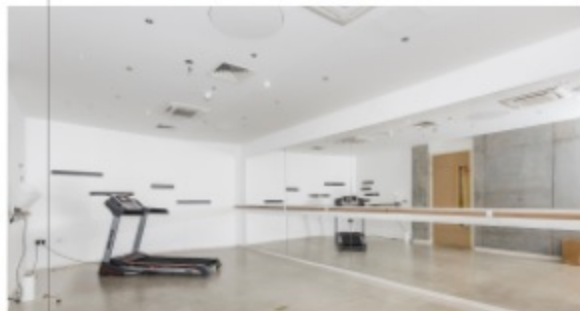
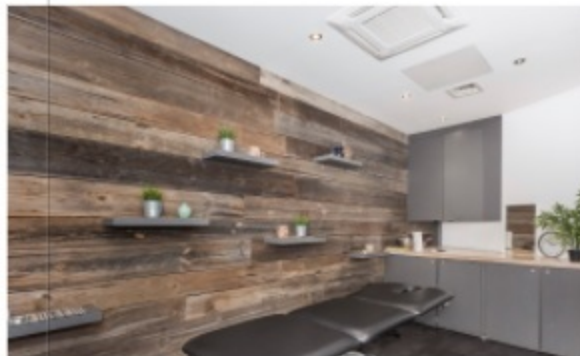




- Lower Ground Floor
- approx 3367sq ft / 313 sq m
- Access from front and rear
- One underground space included
- Rates payable: approx £15,000pa
- Service charge: £6000pa
- License: D1, D2, B1

DESCRIPTION

Architecturally designed space is currently used as a Yoga, Barre, Pilates, Fitness and holistic therapy studios. Located off Well St, which has local shopping facilities and the nearest stations are Homerton and Hackney Central both served by London Overground and main line services.



Get in touch

Filtons
190 High Street, London E15 2NE
office@filtons.com
020 3095 0955
www.filtons.com