

OLD CHURCH STREET  
LONDON, SW3

GRANT J BATES  
— PROPERTY —





# Luxury Chelsea living with a south-facing terrace

GJB

## Old Church Street, London, SW3

### Leasehold

- Built-in Wardrobes
- Balcony
- Air Conditioning
- Built-in Kitchen Appliances
- CCTV
- Cinema
- Newly Refurbished
- Concierge / Porter
- Bespoke Kitchen
- Secure Underground Parking Space with EV Charger
- Integrated Sonos Speakers Throughout
- Lift

**Will Leggatt**

**Broker**

07885 585 135

will@grantjbates.com



### Description

Positioned within the prestigious Essoldo House development, this exceptional two-bedroom, two bathroom apartment occupies the second floor of an exclusive boutique residence on Old Church Street, moments from the boutiques, cafés and restaurants of the King's Road.

The apartment offers a spacious lateral layout centred around an impressive double reception room, opening onto a large south-facing terrace spanning the full width of the home. Floor-to-ceiling windows flood the interiors with natural light, while each principal room enjoys direct terrace access, creating a seamless indoor-outdoor living experience.

The Porcelanosa contemporary open-plan kitchen is fitted with premium Miele appliances and an instant boiling-water tap, flowing effortlessly into the dining and reception areas.

The principal bedroom benefits from a dressing area, ensuite shower room and terrace access. A second double bedroom features bespoke oak-panelled wardrobes, complemented by a family bathroom and guest cloakroom.

Further benefits include secure underground parking, underfloor heating beneath European oak flooring, comfort cooling, integrated Sonos speakers throughout, lift access, and Carrara marble finishes throughout. This beautifully appointed home combines refined contemporary living with the timeless charm of Chelsea.

### Situation

Old Church Street is one of Chelsea's most sought-after addresses, stretching between the Thames and the King's Road. Cultural landmarks including the Saatchi Gallery, Cadogan Hall and the Royal Court Theatre are nearby, while Battersea Park, Sloane Square and Pavilion Road are all within easy reach, contributing to the area's distinctive village-like atmosphere.

### Additional Information

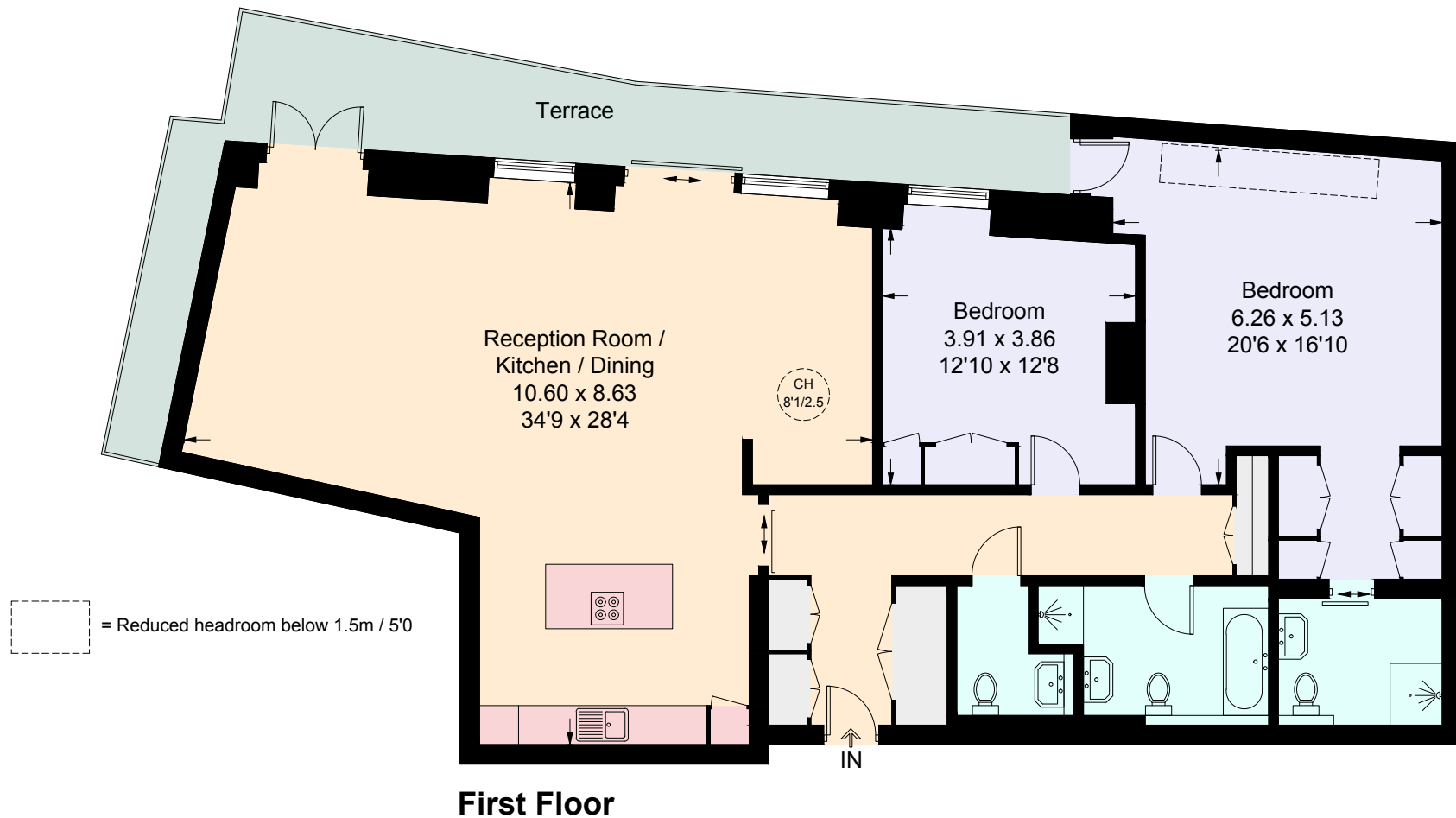
**Local Authority:** Kensington & Chelsea

**Council Tax Band:** TBC

**EPC Rating:** TBC







## Old Church Street

Approximate Gross Internal Area = 139 sq m / 1496 sq ft

**Important Notice:** These sales particulars are prepared as a general guide only. We have not carried out a survey or tested appliances/fittings etc. Measurements are estimated and rounded, they are taken between the internal wall surfaces and therefore included cupboards and other joinery. The details should not be relied upon for carpets, floor coverings, fixtures, fittings, furnishings et al. All fixtures, fittings, furnishings, kitchen appliances, whether fitted or not, are deemed removable by the vendor unless otherwise stated or agreed specifically as part of any eventual sale.