



## Newcastle Place, W2

£650,000

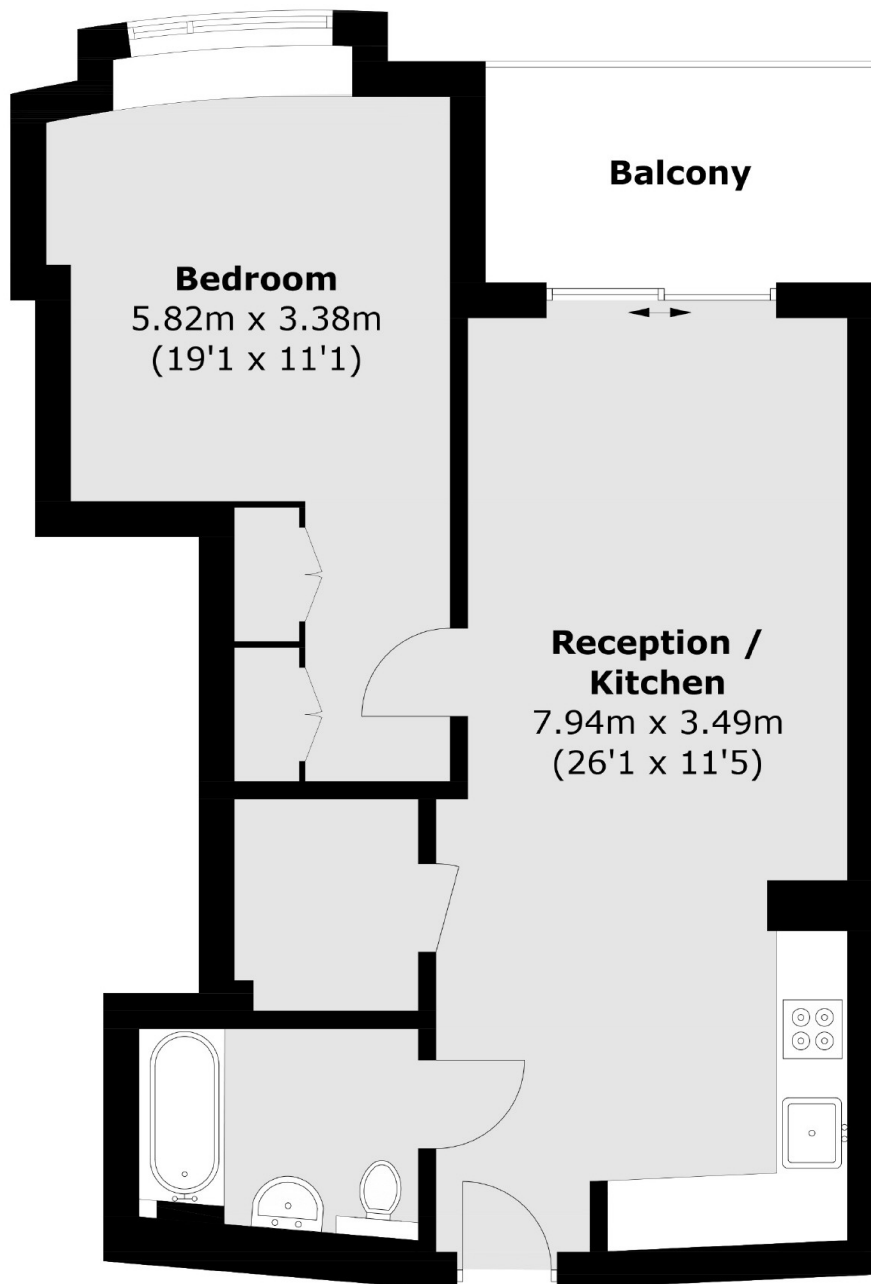
A high specification one double bedroom apartment on the third floor (with lift) of a prestigious apartment building with a concierge, pool, gym, spa and private cinema. This spacious property has an open-plan kitchen and reception that leads to the private balcony and is ideal for entertaining.

Westmark Tower is conveniently located for access to the green spaces of Hyde Park and a choice of transport links. For shopping and eating out, there's plenty of local choice in Marylebone, Little Venice and the West End.

### Features

One Double Bedroom  
High Specification  
Balcony  
Lift, Private Cinema  
Concierge, Pool, Gym  
Open-Plan

# Newcastle Place, London, W2



Total area (approx.): 51.3 sq. m (552.2 sq. ft)  
Balcony : 6.1 sq. m (65.6 sq. ft)

## Dexters

Hyde Park and Bayswater  
4-5 Spring Street  
London  
W2 3RA  
Sales  
020 7298 1550

Energy Rating: B. We aim to make our particulars both accurate and reliable. However they are not guaranteed; nor do they form part of an offer or contract. If you require clarification on any points then please contact us, especially if you're traveling some distance to view. Please note that appliances and heating systems have not been tested and therefore no warranties can be given as to their good working order.

 **RICS** | Regulated  
Estate Agent  
and Letting Agent

[dexters.co.uk](https://www.dexters.co.uk)