

TO LET



Clayworks, Hanley

1 Bedroom, 1 Bathroom, Apartment

£950 pcm



Clayworks, Hanley

1 Bedroom, 1 Bathroom

£950 pcm

Date available: 10th June 2026

Deposit: £1,096

Furnished

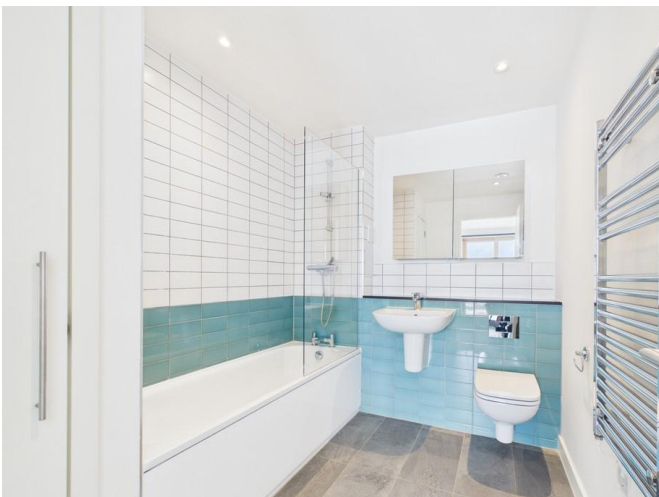
Council Tax band: A

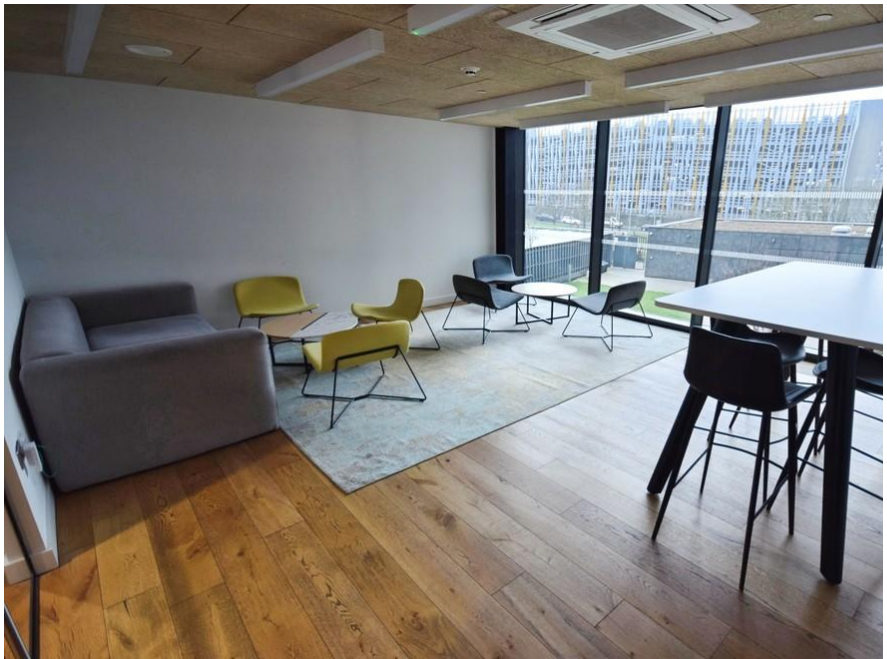
- 10th Floor flat
- Open plan lounge and kitchen
- Double bedroom
- Bathroom
- Lifts to all floors
- Residents daytime service manager
- Weekend concierge

10TH FLOOR FURNISHED 1 BEDROOM FLAT WITH AMAZING VIEWS. Martin & Co are pleased to bring to the market this stunning furnished apartment located at the highly sought after Clayworks development in Hanley which is located within walking distance from the town centre. Clayworks offers all residents a daytime residents service manager, weekend concierge, multi purpose room, a roof terrace and a private landscaped garden area.

This apartment in brief comprises of an open plan kitchen/living area, double bedroom with fitted wardrobe and a 'Jack and Jill' style bathroom.







Energy Efficiency Rating

	Current	Potential
Very energy efficient - lower running costs		
(92+) A		
(81-91) B	82	82
(69-80) C		
(55-68) D		





Martin & Co Stoke on Trent

12 Albion Street • Stoke-On-Trent • ST1 1QH

T: 01782 262880 • E: stokeontrent@martinco.com <http://www.martinco.com>

01782 262880



Accuracy: References to the Tenure of a Property are based on information supplied by the Seller. The Agent has not had sight of the title documents. A Buyer is advised to obtain verification from their Solicitor. Items shown in photographs including but not limited to carpets, fixtures and fittings are not included unless specifically mentioned within the sales particulars. They may however be available by separate negotiation. Buyers must check the availability of any property and make an appointment to view before embarking on any journey to see a property. No person in the employment of the agent has any authority to make any representation about the property, and accordingly any information given is entirely without responsibility on the part of the agents, sellers(s) or lessors(s). Any property particulars are not an offer or contract, nor for part of one. **Sonic / Laser Tape:** Measurements taken using a sonic / Laser tape measure may be subject to a small margin of error. **All Measurements:** All Measurements are Approximate. **Services Not tested:** The Agent has not tested any apparatus, equipment, fixtures and fittings or services and so cannot verify that they are in working order or fit for the purpose. A Buyer is advised to obtain verification from their Solicitor or Surveyor.

