

# ANTHONY JAMES MANSEY

Residential Sales & Lettings



## Linkfield Road

Isleworth, TW7 6QP

£1,600 Per Month



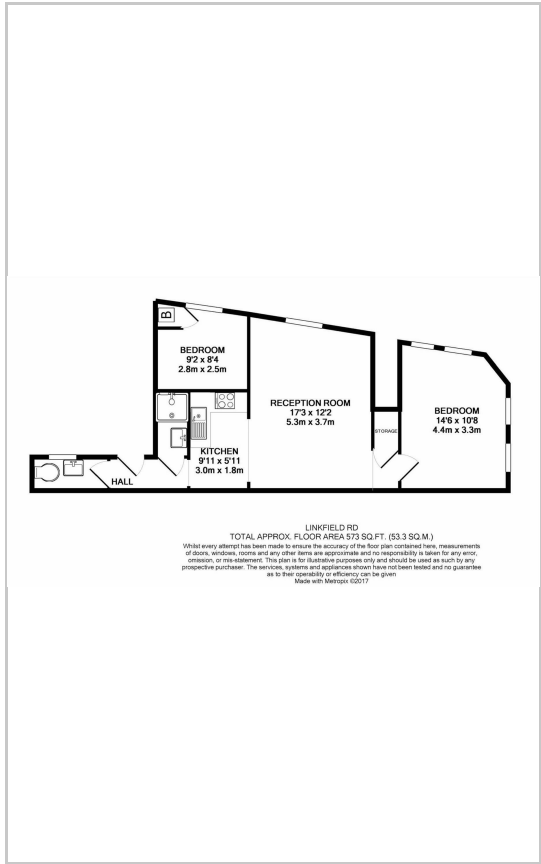
Anthony James Manser are pleased to introduce this converted 2 bedroom apartment. The apartment is located on the ground floor and comprises lounge, newly fully fitted kitchen with all new appliances, modern shower room, one bedroom is of a double size including wardrobes and the second bedroom could be suitable for a small bedroom or a study.



## Area Map



## Floor Plans



## Energy Efficiency Graph

Energy Efficiency Rating		Current	Potential
<i>Very energy efficient - lower running costs</i>			
(92 plus) <b>A</b>			
(81-91) <b>B</b>			
(69-80) <b>C</b>			
(55-68) <b>D</b>			
(39-54) <b>E</b>			
(21-38) <b>F</b>			
(1-20) <b>G</b>			
<i>Not energy efficient - higher running costs</i>			
<b>England &amp; Wales</b>		EU Directive 2002/91/EC	

These particulars, whilst believed to be accurate are set out as a general outline only for guidance and do not constitute any part of an offer or contract. Intending purchasers should not rely on them as statements of representation of fact, but must satisfy themselves by inspection or otherwise as to their accuracy. No person in this firm's employment has the authority to make or give any representation or warranty in respect of the property.