

10 Bingley Close

Bishop's Stortford

Council Tax band: G

Tenure: Freehold

- Five double bedrooms
- Chain free
- Driveway & garage
- Two ensuites
- Utility room
- South facing garden
- Close to Bishop's Stortford town centre & station



Entrance Hall

Living Room

13' 9" x 11' 1" (4.19m x 3.39m)

Kitchen

11' 7" x 10' 2" (3.53m x 3.09m)

Family / Dining room

18' 2" x 10' 2" (5.54m x 3.09m)

Utility

7' 0" x 6' 7" (2.13m x 2.01m)

Study

11' 1" x 6' 10" (3.38m x 2.08m)

WC

Primary Bedroom

17' 6" x 11' 4" (5.34m x 3.45m)

Ensuite Bathroom

Shower Room

Bedroom

11' 11" x 10' 6" (3.62m x 3.19m)

Bedroom

11' 11" x 10' 6" (3.62m x 3.19m)

Bedroom

17' 11" x 11' 4" (5.46m x 3.46m)

Bedroom

14' 4" x 10' 10" (4.37m x 3.29m)

Ensuite Shower Room





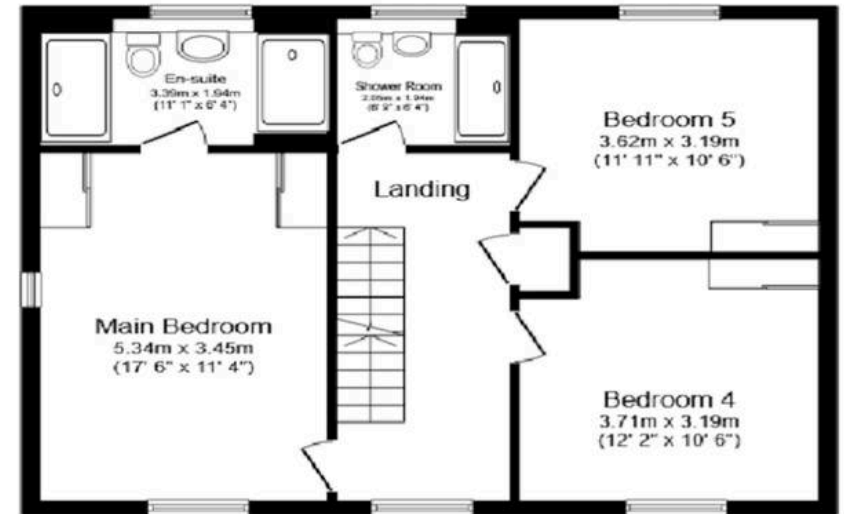
Ground Floor

Floor area 67.7 sq.m. (728 sq.ft.)



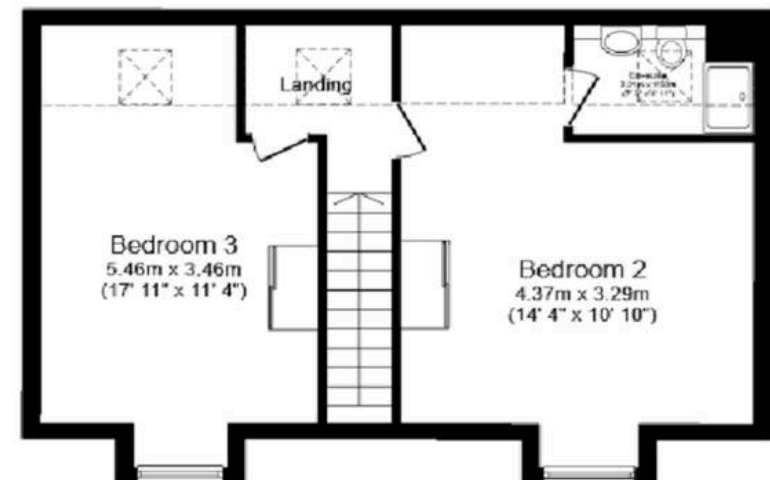
First Floor

Floor area 67.7 sq.m. (728 sq.ft.)



Second Floor

Floor area 49.0 sq.m. (527 sq.ft.)



Total floor area: 200.48 sq. m (2158 sq. ft)

This floor plan is for illustrative purposes only. It is not drawn to scale. Any measurements, floor areas (including any total floor area), openings and orientations are approximate. No details are guaranteed, they cannot be relied upon for any purpose and do not form any part of any agreement. No liability is taken for any error, omission or