



Westbourne Park Road
Notting Hill, W11

CHESTERTONS



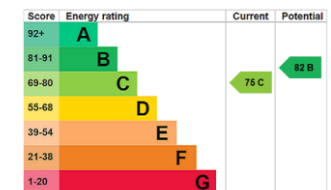


Positioned on the raised ground floor of a period building, this two bedroom apartment features impressive ceiling heights of over three meters. The open plan reception has a bay with large sash windows allowing in plenty of natural light.

Westbourne Park Road is ideally located in Notting Hill near the vibrant selection of bars, boutiques and eateries along Portobello Road and Golborne Road. Ladbroke Grove Underground station is conveniently close by, providing access to the Circle and Hammersmith & City lines.

- Raised ground floor period apartment
- Two bedrooms
- Ceiling heights exceeding 3 metres
- Bay fronted open plan reception
- Close to Portobello Road & Ladbroke Grove Station

Asking Price £600,000

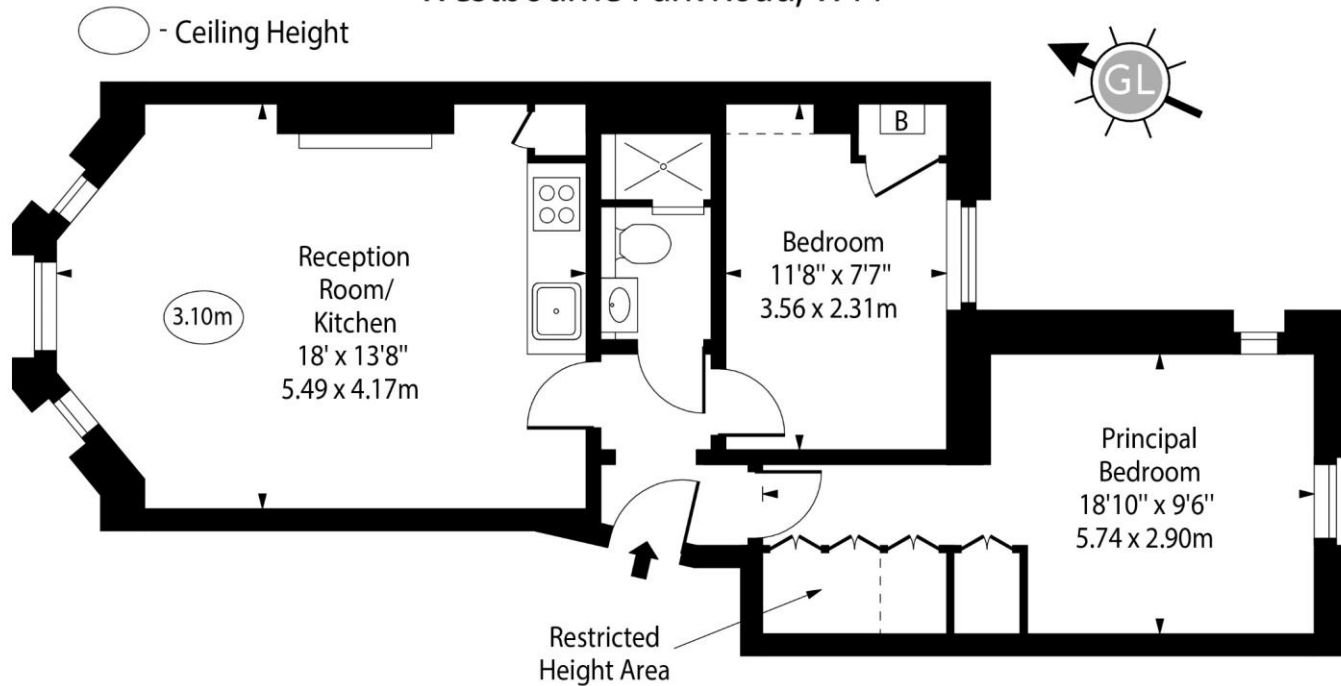


Tenure: Leasehold 82 years 9 months
Service Charge: £1080
Ground Rent: £50
Local Authority: Kensington and Chelsea
Council Tax Band: E

Chestertons Notting Hill Sales

30 Ledbury Road
 Notting Hill
 London
 W11 2AB
 nottinghill@chestertons.co.uk
 0203 040 8585

Westbourne Park Road, W11



Upper Ground Floor

Approx Gross Internal Area 538 Sq Ft - 49.98 Sq M

Approx. Floor Area Including Restricted Heights 550 Sq Ft - 51.10 Sq M

Every attempt has been made to ensure the accuracy of the floor plan shown.
However, all measurements, fixtures, fittings, and data shown are approximate interpretations and
for illustrative purposes only. Measured according to the RICS. Not To Scale.

www.goldlens.co.uk

Ref. No. 030411K

