

1 Queningate Court, Havelock Street, Canterbury, Kent, CT1 1HB

£990 PCM

- STUDENT FLAT
- CLOSE TO CHRIST CHURCH UNIVERSITY
- NO PETS ALLOWED
- 1 BATHROOMS
- FURNISHED PROPERTY
- WIFI ENABLED
- 1 BEDROOMS
- BILLS PACKAGE AVAILABLE
- COUPLES WELCOME
- NO PARKING AVAILABLE

1 Queningate Court, Canterbury CT1 1HB

STUDENTS & PROFESSIONALS WELCOME - AVAILABLE 2026/2027 - WIFI INCLUDED / COUPLES WELCOME

Just a stone's throw from Christchurch University and a short stroll to the city centre and bus station, this modern, stylish 1 bedroom apartment is perfect for students. Designed with students in mind, this property comes equipped with WIFI which is included in the price, separate bedroom.

Apartment furnishings include double bed with storage, wardrobe, desk and chair, sofa and electrical sockets with USB charging points. The kitchen area comes supplied with fridge/freezer, induction hob, electric oven, microwave, washer/dryer and a slimline dishwasher. The modern shower room well sleek and compact is fitted with a generous sized shower, wash hand basin and toilet. No Parking.

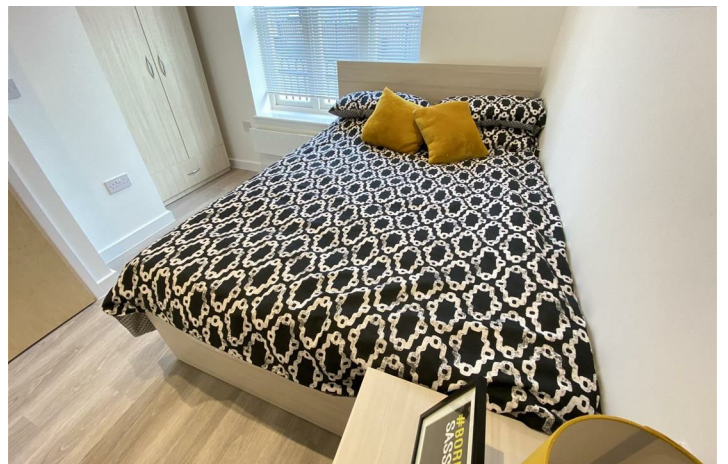
* Bills package can be available if required (subject to full occupancy and being let on a 12 month tenancy)*

Don't delay, call today to arrange a viewing.

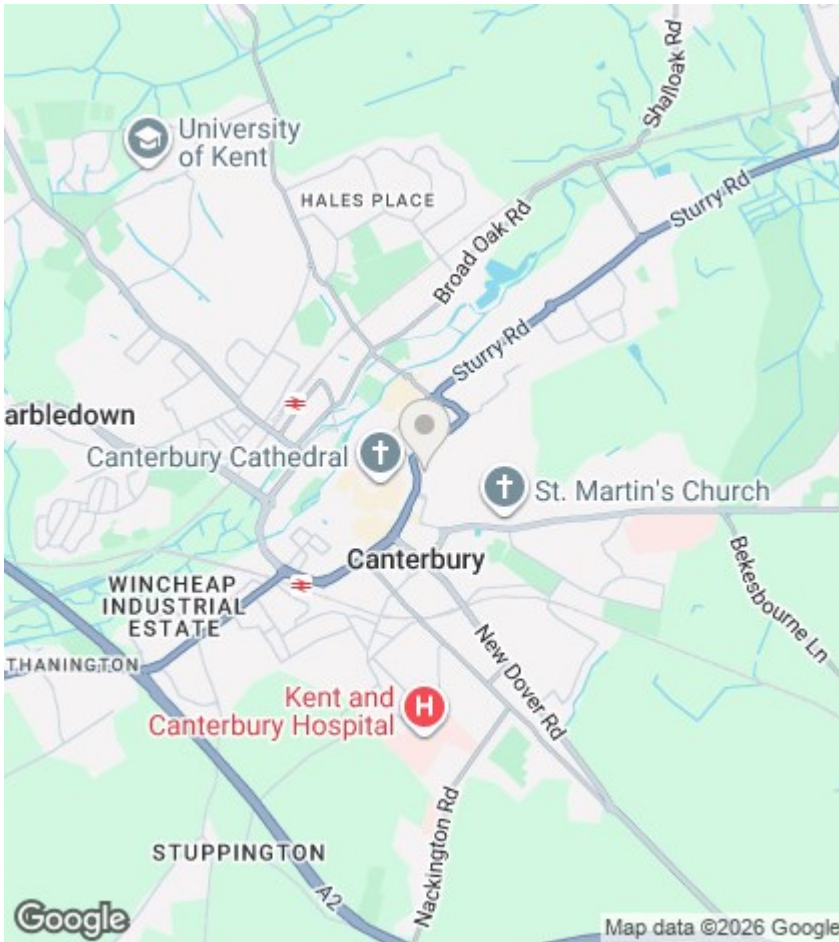
Council Tax Band for property is - Band A



Council Tax Band: A







Directions

Viewings

Viewings by arrangement only. Call 01227 788088 to make an appointment.

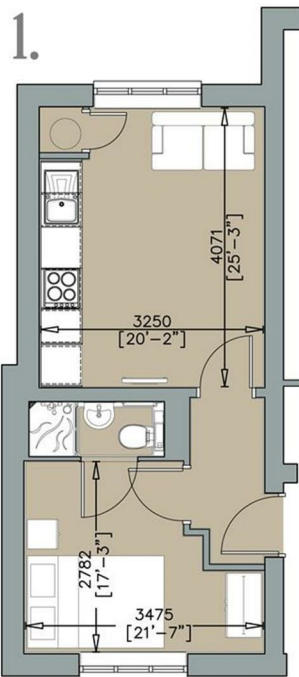
EPC Rating:

C

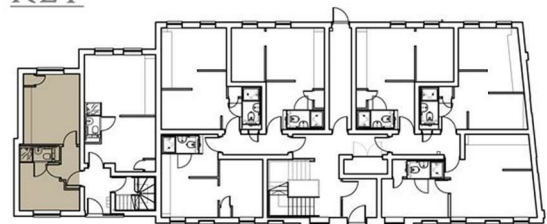
Energy Efficiency Rating		Current	Potential
Very energy efficient - lower running costs			
(92 plus)	A		
(81-91)	B		
(69-80)	C	75	75
(55-68)	D		
(39-54)	E		
(21-38)	F		
(1-20)	G		
Not energy efficient - higher running costs			
England & Wales		EU Directive 2002/91/EC	

QUENINGATE COURT

HAVELOCK STREET CANTERBURY



KEY



GROUND FLOOR

