

Parkheath

Sold on Service

Goldhurst Terrace NW6

£2,600 PCM (£600 per week) - Camden Band E



Excellent two-bedroom apartment in South Hampstead

Oak wood flooring and high ceilings throughout

Two bedrooms with built-in storage

3-minute walk to South Hampstead Overground

EPC: Rating C

Raised ground floor of an attractive period conversion

Bright reception room with open-plan kitchen

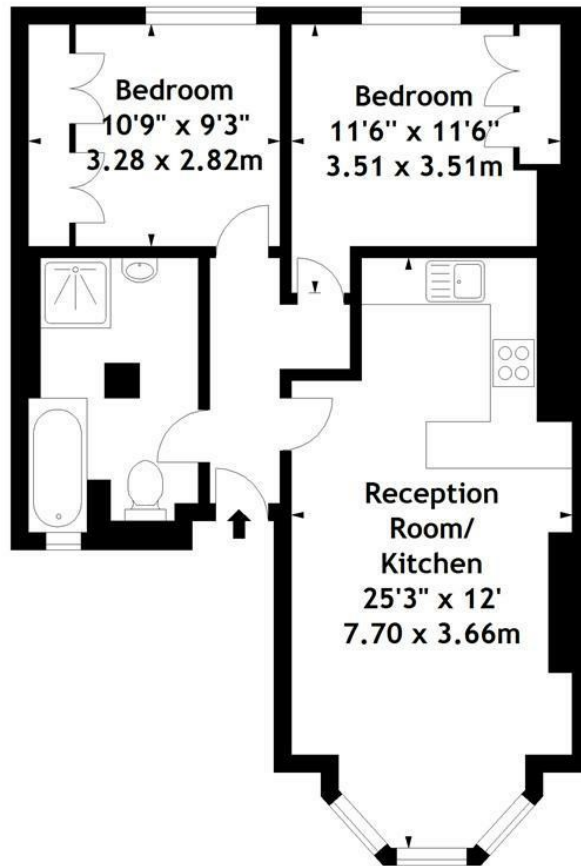
Stylish bathroom with bath and separate shower

7 minutes to Finchley Road Underground (Zone 2)

Council Tax: Camden, band E

West Hampstead Office 020 7794 7111

Goldhurst Terrace, NW6
Approx. Gross Internal Area
620 Sq Ft - 57.60 Sq M



Raised Ground Floor

Measured in accordance with RICS guidelines. Every attempt is made to ensure accuracy, however all measurements are approximate. This floor plan is for illustrative purposes only and is not to scale.
© Datagraphy Ltd 2016
Photographs * Floorplans * Virtual Tours
Tel: 0845 643 4401 www.datagraphy.com

The particulars do not constitute part of an offer or contract. The particulars, including text, photographs and plans, are for the guidance only of prospective purchasers/tenants and must not be relied upon as statements of fact. The descriptions provided therein represent the opinion of the author and whilst given in good faith should not be construed as statements of fact. Nothing in these particulars shall be deemed a statement that the property is in good condition or otherwise or that any services or facilities are in good working order. All measurements are approximate