



Brompton Park Crescent, SW6

£400,000

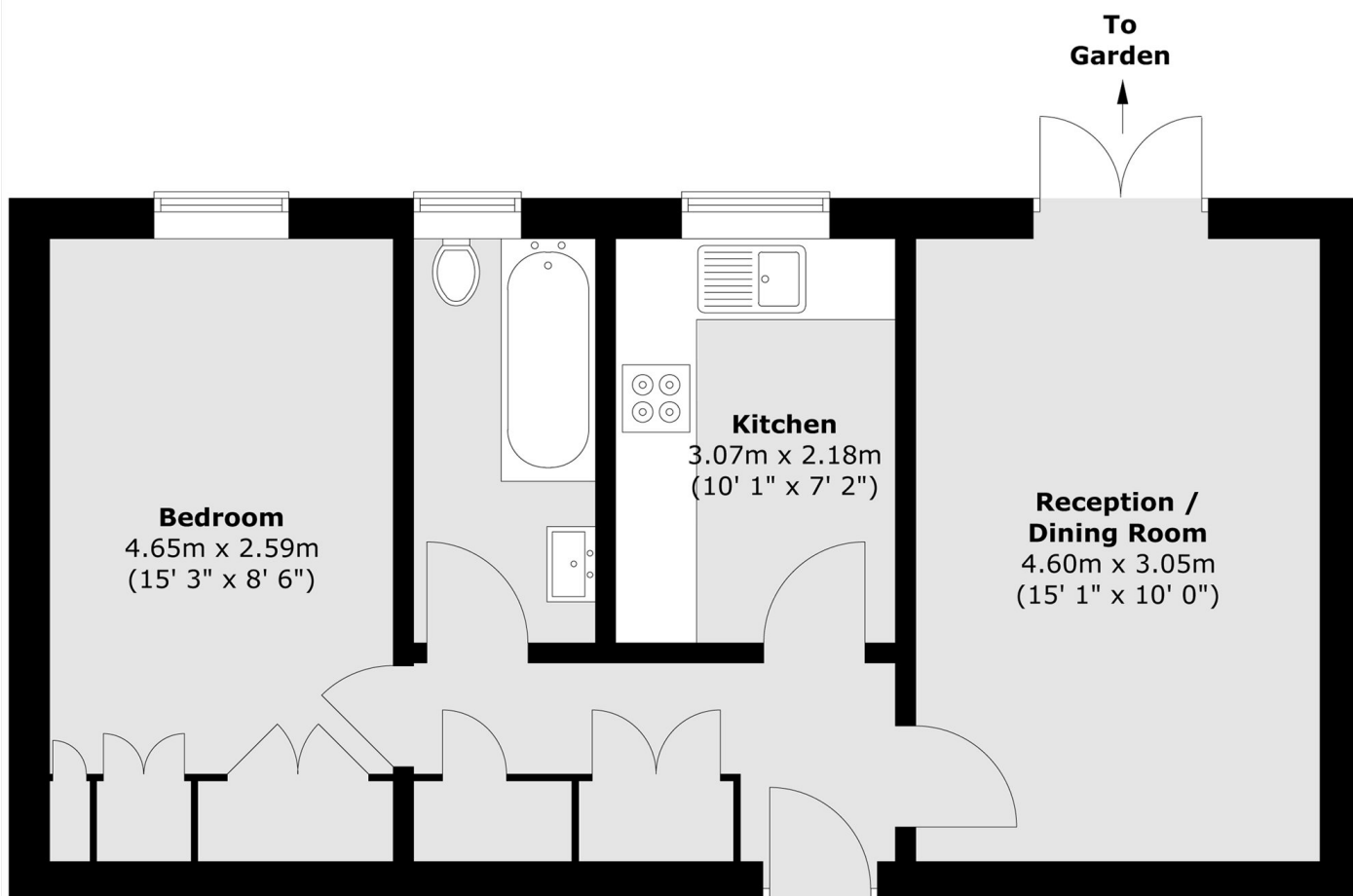
A well proportioned ground floor flat situated within a popular gated development. The property features a generous reception room with direct access to a private patio garden, a separate fully integrated kitchen and a bedroom with ample fitted storage.

Brompton Park Crescent is a charming gated community boasting allocated residents parking, maintained surrounds and a refurbished gym along with a swimming pool and concierge. It is ideally positioned within close proximity of Fulham Broadway and West Brompton.

Features

- One Double Bedroom
- Private Patio Garden
- Long Lease
- Chain Free
- Designated Parking Space
- Gated Complex

Brompton Park Crescent, London, SW6



Total area (approx.) : 45.5 sq. m (490 sq. ft)