



Gillingham Road, NW2
£1,100,000

Dexters



Gillingham Road, NW2

A characterful three bedroom terraced family home featuring a private driveway, bright conservatory and a south west facing garden. The property also benefits from multiple outbuildings, with loft extension potential to expand to a four/five bedroom house with a secondary bathroom.

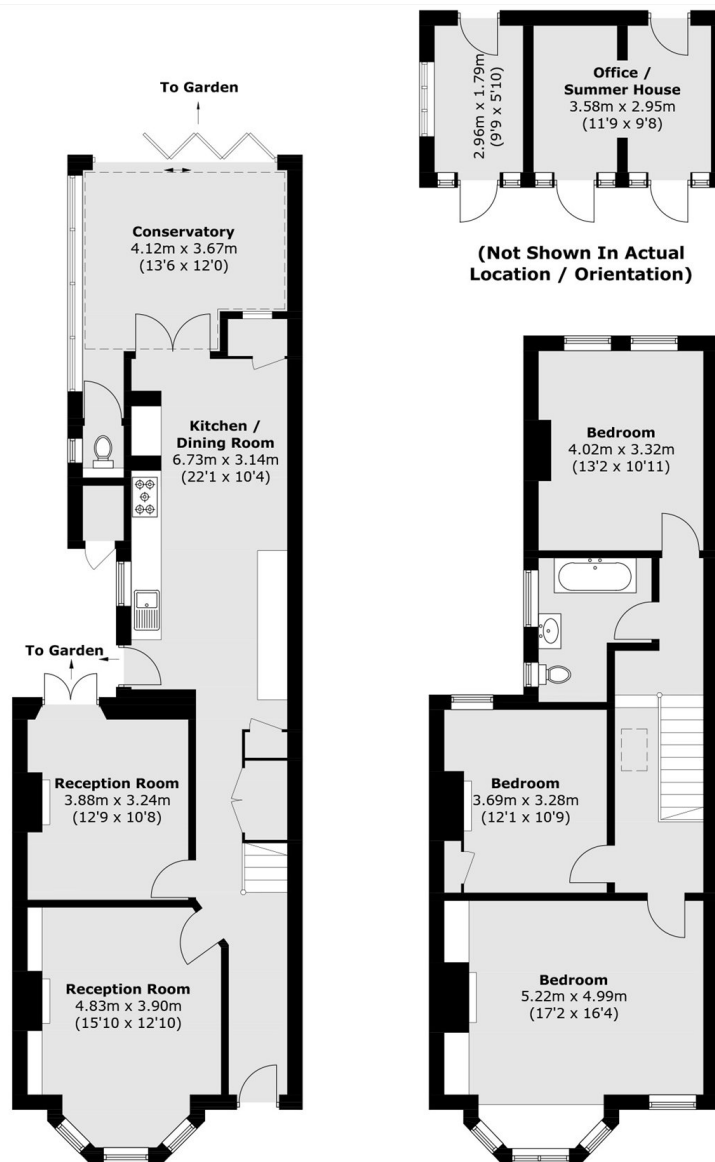
Gillingham Road is a quiet residential street conveniently located close to excellent transport links and a wide range of local amenities. Cricklewood Thameslink station is approximately 0.2 miles from the property, providing easy access into central London.

Features

- Terraced Family Home
- Three Bedrooms
- South West Facing Garden
- Driveway
- Loft Extension Potential
- Multiple Outbuildings



Gillingham Road,
London, NW2



Ground Floor
Total area (approx.): 150.6 sq. m (1,621 sq. ft)
Outbuilding: 16.5 sq. m (177.6 sq. ft)
Outside Storage: 0.9 sq. m (9.7 sq. ft)
Total: 168.0 sq. m (1,808.3 sq. ft)