



## Pump House Crescent, TW8

£725,000

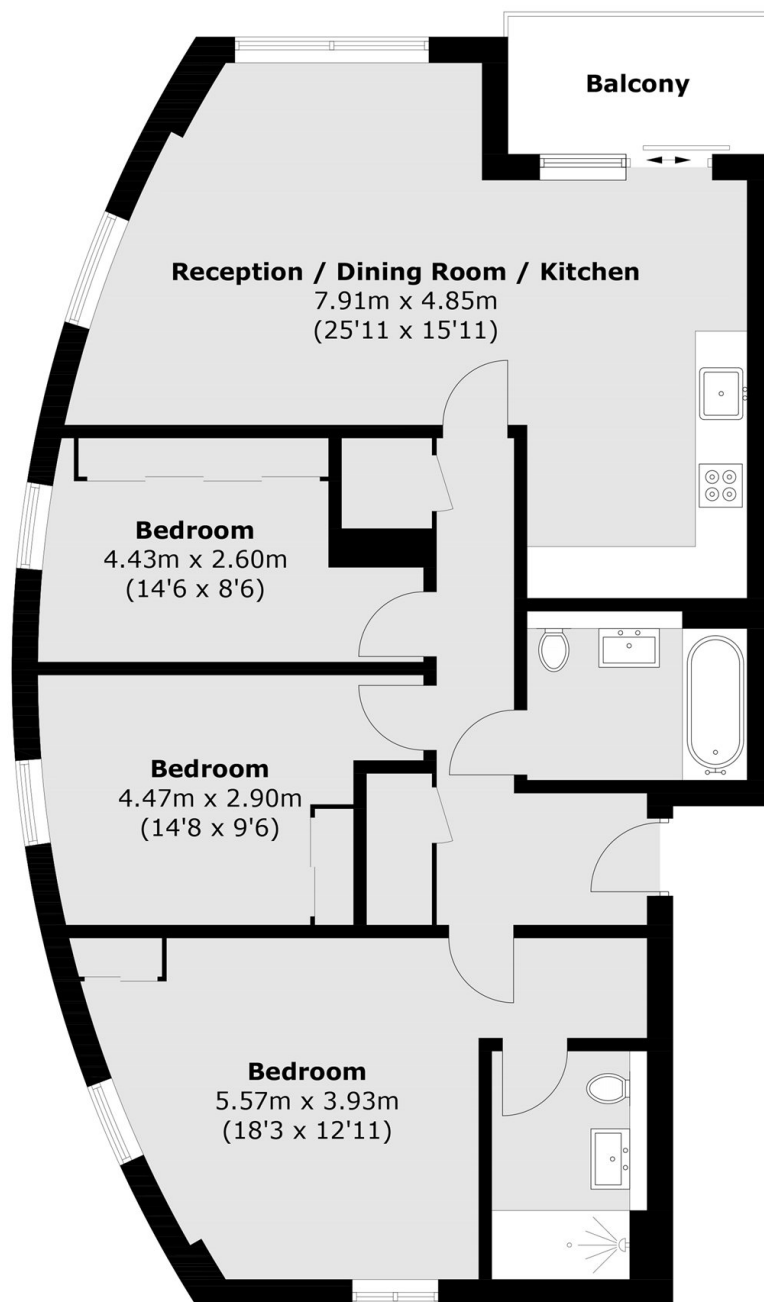
Set in a desirable gated riverside location and offered with no onward chain stands this contemporary three bedroom, two bathroom apartment on the 13th floor with private balcony with stunning views, over 1,000 sq ft of accommodation, lift, parking, 24 concierge and fully equipped residents gym.

Pump House Crescent in TW8 is a modern residential development located in the heart of Brentford, offering a mix of stylish apartments and townhouses. This vibrant community is set close to the picturesque River Thames, providing residents with scenic views and a peaceful living environment.

### Features

- Three Bedrooms
- Two Bathrooms
- Thirteenth Floor
- Over 1,000 Square Feet
- Underground Parking Private
- Concierge and Gym

# Pump House Crescent, Brentford, TW8



## Thirteenth Floor

Total area (approx.): 96.3 sq. m (1,036.6 sq. ft)  
Balcony area (approx.): 4.8 sq. m (51.7 sq. ft)