



Overcliff Road, SE13

£1,600 Per calendar month

A beautiful two bedroom apartment situated in Lewisham. Comprising two bedrooms, one double, one single, a family bathroom and a living/dining room.

The flat is located a short walk from Lewisham stations from where there are great links to all parts of London. Mainline services take you straight into Charing Cross or Cannon St in around 20 mins while the DLR is perfect for anyone working in Canary Wharf. For anyone needing the London Overground, you can pick this up from Brockley station.

Features

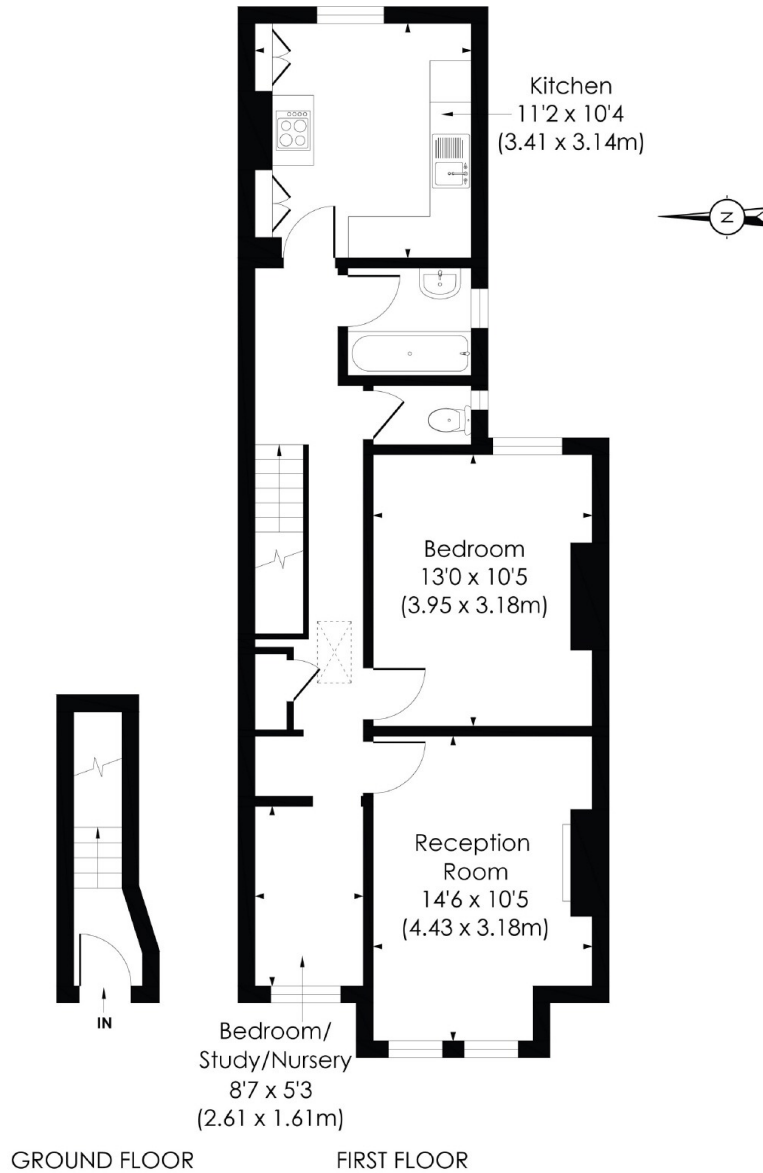
- Two Bedrooms
- Good Size Kitchen
- Large Reception
- Close To Lewisham Stations
- Double Glazing
- Close To Hilly Fields Park

Overcliff Road, London, SE13

OVERCLIFF ROAD, SE13

Approx. Gross Internal Floor Area

674 Sq. ft/62.61 Sq. m



© Pixangle Property Marketing Ltd. info@pixangle.com Tel: 0208 870 2118

pixangle
PROPERTY MARKETING

This floor plan has been prepared for the purpose of illustration only in accordance with the latest RICS code of measuring practice and is not to scale. All measurements and areas are approximate and whilst every effort has been made to ensure the accuracy of the plan contained here, no responsibility is taken for any error, omission or misstatement.

Dexters

Lewisham
228 Algernon Road
London
SE13 7AG

Lettings
0208 690 8020

Energy Rating: C. We aim to make our particulars both accurate and reliable. However they are not guaranteed; nor do they form part of an offer or contract. If you require clarification on any points then please contact us, especially if you're traveling some distance to view. Please note that appliances and heating systems have not been tested and therefore no warranties can be given as to their good working order.

RICS | Regulated
Estate Agent
and Letting Agent

dexters.co.uk