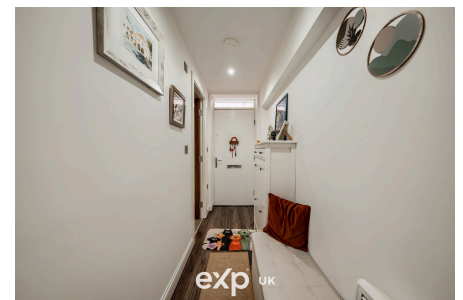


**Kettleworks, Pope Street, Jewellery Quarter, Birmingham, B1 3DW**

£185,000

1 1 1



Originally a 19th-century factory, Kettleworks was thoughtfully transformed into modern apartments in 2019, blending rich heritage with cutting-edge amenities. This property offers a fantastic opportunity for those seeking a vibrant urban lifestyle.

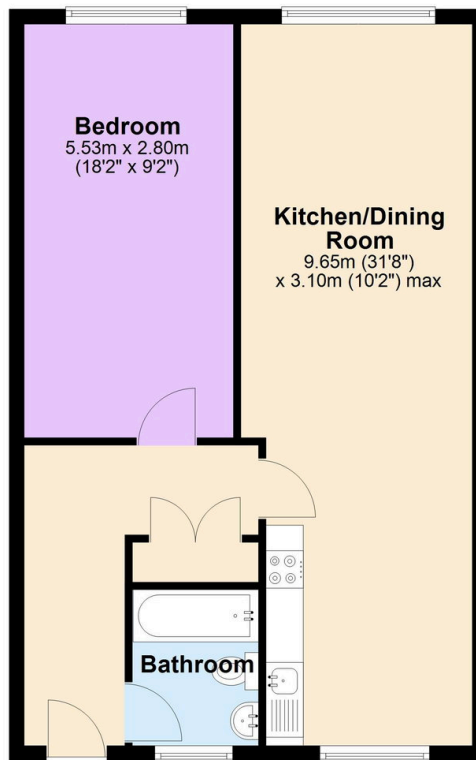
Situated on the fourth floor, the apartment benefits from a private entrance overlooking a tranquil courtyard, providing a quiet retreat from city life. Inside, you'll find an open-plan lounge and kitchen area, designed for modern living and entertaining. The kitchen comes equipped with integrated appliances, perfect for aspiring home chefs.

### Key Features

- Stylish one-bedroom apartment in the sought-after Jewellery Quarter – perfect for first-time buyers wanting city living (KG1002)
- Open-plan lounge and kitchen space ideal for entertaining, relaxing, and modern lifestyles
- Exclusive resident facilities including a gym, rooftop terrace, and 24-hour concierge service
- Secure gated parking space included – a rare and valuable city-centre benefit
- Located within the iconic Kettleworks development, blending historic character with modern design
- Contemporary kitchen with integrated appliances included
- Private fourth-floor position overlooking a peaceful courtyard for added privacy
- Fantastic location within walking distance of Birmingham’s best restaurants, bars, shops, and transport links

#### Fourth Floor

Approx. 58.0 sq. metres (623.8 sq. feet)



Total area: approx. 58.0 sq. metres (623.8 sq. feet)