



Grove Hall Court | Hall Road | St Johns Wood | London | NW8

Asking Price - £2,750 Per month

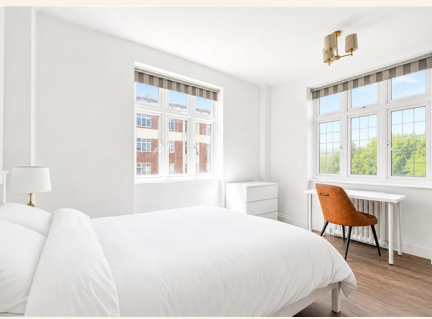


- One bedroom Apartment
- Spacious reception room
- Located on Hall Road
- Easy access to transport
- Modern bathroom
- 475 sq ft space
- Close to London amenities
- Quiet residential area

A spacious one bedroom apartment, recently partly renovated to a high standard, set on the second floor of a secure purpose-built portered block with lift access.

The property comprises a generous double bedroom with a large wardrobe, a full-sized bathroom, a fitted kitchen, and a spacious reception room. Presented in good neutral condition throughout, the apartment offers excellent living space, security, and comfort within a well-maintained residential building.

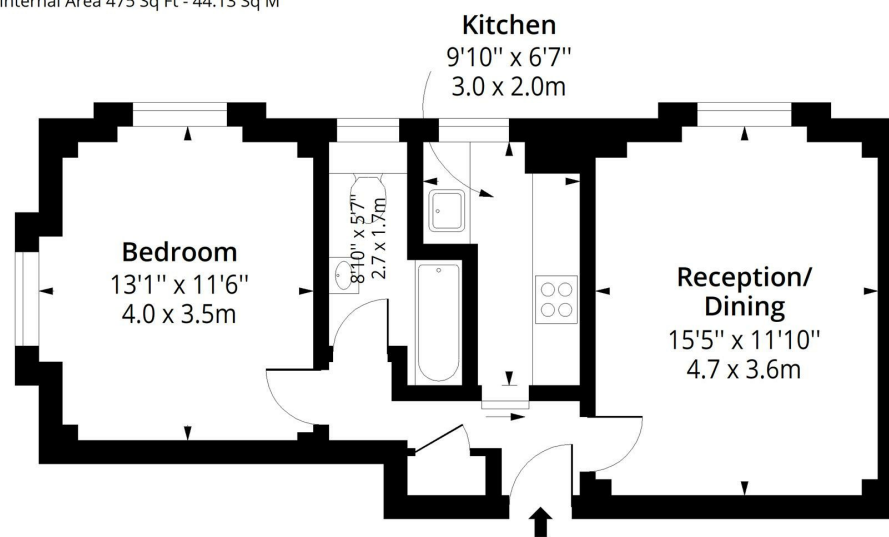




Situated on Hall Road in St John's Wood, NW8, the property is well placed for the shops, cafés, restaurants, and amenities of St John's Wood, Maida Vale, and Abbey Road. Transport links are excellent, with Maida Vale Underground Station nearby for the Bakerloo line, while St John's Wood Underground Station provides access to the Jubilee line, offering direct connections towards Baker Street, Bond Street, London Bridge, Canary Wharf, and Stratford. The area also benefits from easy access to Regent's Park, Little Venice, and the open spaces of Paddington Recreation Ground.

Grove Hall Court NW8

Approx. Gross Internal Area 475 Sq Ft - 44.13 Sq M



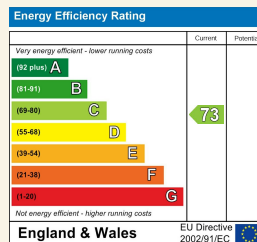
Second Floor

Floor Area 475 Sq Ft - 44.13 Sq M



Measured according to RICS IPMS2. Floor plan is for illustrative purposes only and is not to scale. Every attempt has been made to ensure the accuracy of the floor plan shown, however all measurements, fixtures, fittings and data shown are an approximate interpretation for illustrative purposes only. 1 sq m = 10.76 sq feet. Date: 22/5/2026

Council Tax Band F EPC Rating C



24 Bristol Gardens
 London
 W9 2JQ
 hello@draperlondon.com
 0203 143 1900