



Prescott Place, Clapham, SW4

2 bedroom maisonette for sale

£575,000

Share of Freehold

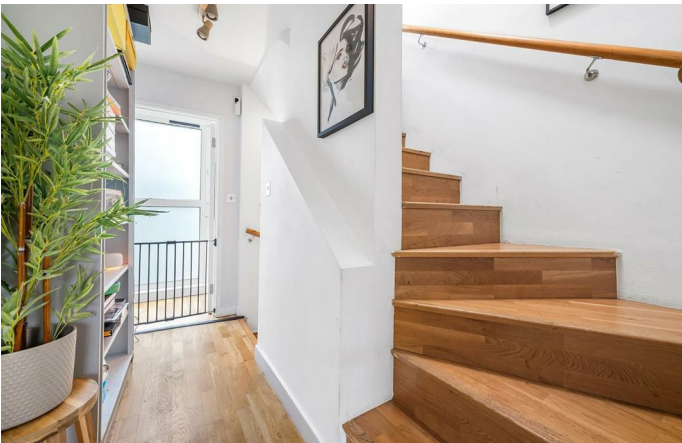
Property Details

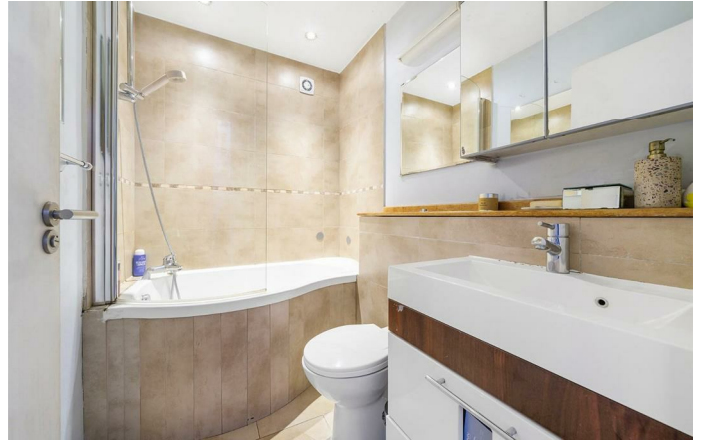
A superb two bedroom split-level maisonette with its own private entrance, occupying the upper floors of an attractive end-of-terrace property on the highly regarded Prescott Place, moments from the amenities of Clapham Old Town, Clapham High Street, the Common and Tube. This beautifully finished home has been fully owner-occupied since purchase and enjoys an elevated, exceptionally bright and private setting. The intelligent layout places the bedrooms on the first floor with the open-plan living space above, offering excellent separation and the rare benefit of no neighbours above or below your entertaining space. The upper floor hosts an impressive open-plan reception with lofted ceilings, multiple skylights and a striking wall of floor-to-ceiling glazing, creating a light-filled and uplifting space to lounge and dine. The contemporary kitchen is arranged in a sociable horseshoe design with sleek cabinetry and contrasting worktops. Below, two well-proportioned bedrooms sit at opposite ends of the home, alongside a stylish bathroom with underfloor heating. Further benefits include a new boiler (January 2024), excellent water pressure, permit parking for up to two cars and access to courtyard bike storage.

Features

- Two bedrooms
- End-of-terrace maisonette
- Own private entrance
- Split-level home
- Courtyard with bike storage
- Vast array of amenities on the doorstep
- Moments to Clapham High Street
- Old Town and the Common a short walk away
- Northern Line a five-minute stroll
- Share of freehold

Council tax band C EPC rating D (57)

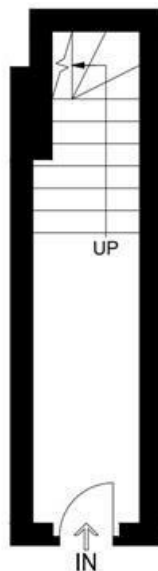




Prescott Place, Clapham, SW4

Prescott Place, SW4
2 Bedroom Flat

APPROXIMATE GROSS INTERNAL AREA: 702 SQ FT / 65.2 SQ M



GROUND FLOOR



While we try our very best, floor plans are produced as a guide only and we take no responsibility for the precise accuracy with which any property is represented.

Prescott Place, Clapham, SW4

