

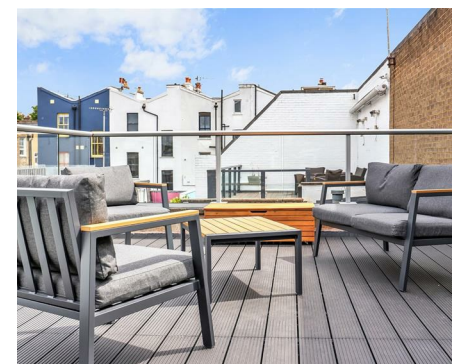


3 Bedrooms

House - Terraced

Located in London

£7,000 Per month



Hello@savipropertyconsulting.com

www.savipropertyconsulting.com

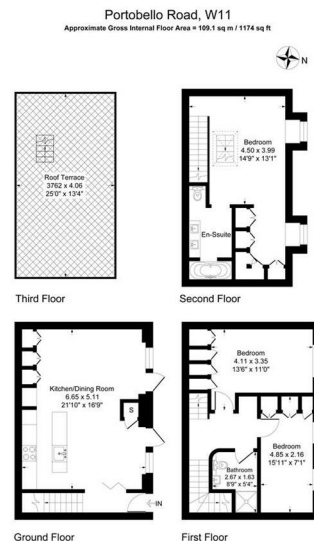


Illustration for identification purposes only, measurements are approximate, not to scale.

Stunning 3 bedroom mews house with a private rooftop terrace, recently redecorated and ideally located in an exclusive gated mews off Portobello Road in vibrant Notting Hill, boasts a contemporary design, sleek finish and offers an exceptional living experience.

As you step into this charming house, you are greeted with a warm and welcoming ambiance, courtesy of the open plan kitchen and living room area. The newly refurbished interior complements the modern aesthetics, with tasteful and thoughtfully chosen decor throughout.

With a total of three bedrooms and two bathrooms, this lovely house provides bespoke accommodation for a growing family or professionals seeking a comfortable yet stylish abode. On the first floor, two bedrooms are well-proportioned with built-in wardrobes conveniently designed, the bathrooms meticulously refurbished to a contemporary lifestyle. The master bedroom en-suite is presented on the second floor for more intimacy with walk-in wardrobes and direct access to the roof terrace.

One of the unique highlights of this property is the magnificent roof terrace, offering a serene retreat where one can soak up the sun, entertain guests, or simply unwind after a long day. This private oasis is perfect for al fresco dining or enjoying peaceful evenings under starry skies.

Situated within a gated mews, this house ensures security and a sense of exclusivity for its residents. The location is truly unparalleled, providing easy access to a plethora of amenities, including shops, restaurants on Notting Hill. Commuters will benefit from excellent transport links nearby, walking distance to Notting Hill Gate station and Ladbroke Grove Station.

Energy Efficiency Rating: D

Agents Note: Whilst every care has been taken to prepare these particulars, they are for guidance purposes only. All measurements are approximate and are for general guidance purposes only and whilst every care has been taken to ensure their accuracy, they should not be relied upon and potential buyers/tenants are advised to recheck the measurements.



24 Notting Hill Gate

London

W11 3LB

Hello@savipropertyconsulting.com

www.savipropertyconsulting.com