



Connells

Beamanor Court Beamanor Road
Leicester



Property Description

Beaumanor Court, 202-212 Beaumanor Road, Leicester, LE4 5QB

Well-Presented Apartment in Popular Location – Ideal First-Time Buy or Investment

A well-maintained apartment situated on the sought-after Beaumanor Road, offering a bright lounge/dining room, fitted kitchen, well-proportioned bedroom, and bathroom with a three-piece suite.

The property benefits from double glazing, secure entry, and access to communal grounds with allocated parking.

Conveniently located close to local amenities, transport links, and Leicester city centre. Ideal for first-time buyers or investors. Viewing highly recommended.

Entrance Porch

Entrance Hall

A welcoming entrance hall providing access to all rooms, with space for storage and a clean, well-maintained finish.

Lounge/Dining Room

A spacious lounge/dining room offering a bright and comfortable living area with ample space for both seating and dining, brick fireplace with surround and double glazed window

Kitchen

Fitted with a range of wall and base units with ample worktop space, part tiled walls, oven, hob and extractor fan, tiled floor and double glazed window

Bedroom

A good-sized bedroom offering space for wardrobes and additional furniture. Having double glazed window and electric heater

Wetroom

Fitted with a walk-in shower, wash hand basin and WC, designed for easy access and practicality. Obscure glazed window allowing ventilation and privacy

Outside

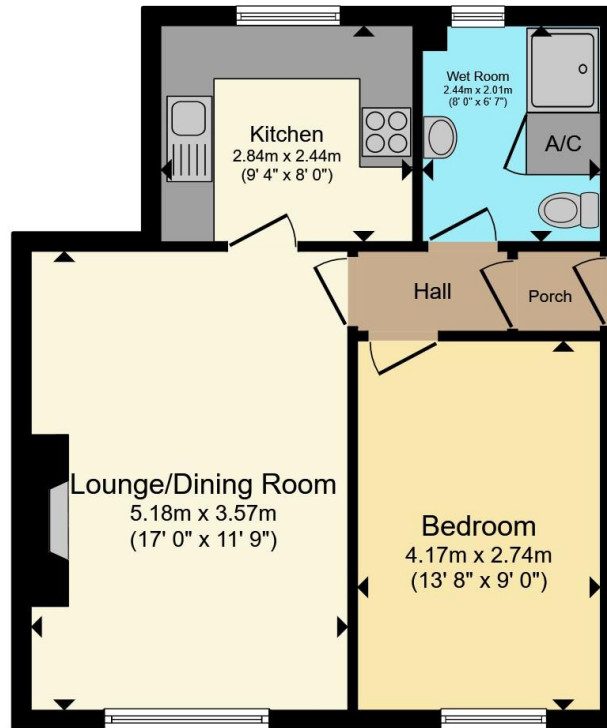
Externally, the property benefits from allocated parking







BEAMANOR COURT
FLATS 1-6
202 - 212 Beamanor Road



Total floor area 45.8 m² (493 sq.ft.) approx

This floor plan is for illustrative purposes only. It is not drawn to scale. Any measurements, floor areas (including any total floor area), openings and orientation are approximate. No details are guaranteed, they cannot be relied upon for any purpose and they do not form part of any agreement. No liability is taken for any error, omission or misstatement. A party must rely upon its own inspection(s). Powered by www.propertybox.io



To view this property please contact Connells on

T 0116 262 0022
E leicester@connells.co.uk

22-24 Halford Street
 LEICESTER LE1 1JB

EPC Rating: D Council Tax Band: A

Service Charge: Ask Agent

Ground Rent: 600.00

Tenure: Leasehold

view this property online connells.co.uk/Property/LTR326149

This is a Leasehold property with details as follows; Term of Lease 999 years from 01 Sep 1983. Should you require further information please contact the branch. Please Note additional fees could be incurred for items such as



1. MONEY LAUNDERING REGULATIONS Intending purchasers will be asked to produce identification documentation at a later stage and we would ask for your co-operation in order that there will be no delay in agreeing the sale. 2. These particulars do not constitute part or all of an offer or contract. 3. The measurements indicated are supplied for guidance only and as such must be considered incorrect. Potential buyers are advised to recheck measurements before committing to any expense. 4. We have not tested any apparatus, equipment, fixtures, fittings or services and it is in the buyers interest to check the working condition of any appliances.

Connells Residential is registered in England and Wales under company number 1489613, Registered Office is Cumbria House, 16-20 Hockliffe Street, Leighton Buzzard, Bedfordshire, LU7 1GN. VAT Registration Number is 500 2481 05.

See all our properties at www.connells.co.uk | www.rightmove.co.uk | www.zoopla.co.uk

Property Ref: LTR326149 - 0003