



Carlyle Court

Chelsea Harbour, London, SW10 0UQ

£950 Per Week

An extremely well proportioned bright and spacious two double bedroom apartment situated on the first floor of this secure, high calibre development overlooking Chelsea Harbour Marina.

This fine property having just been redecorated throughout boasts wooden flooring, two double bedrooms with ample wardrobes, master with en-suite bathroom and walkin shower, second bathroom/WC, large sweeping living room and affording access to a deep long private balcony. Semi open-plan fitted kitchen.

The building benefits from having 24 hour concierge, private underground parking space, lift, impressive reception area. Chelsea Harbour pride's itself on the security and discretion, allowing residents excellent enjoyment of the 'Marina' lifestyle.

This fine flat is offered furnished and is available from early September 2026

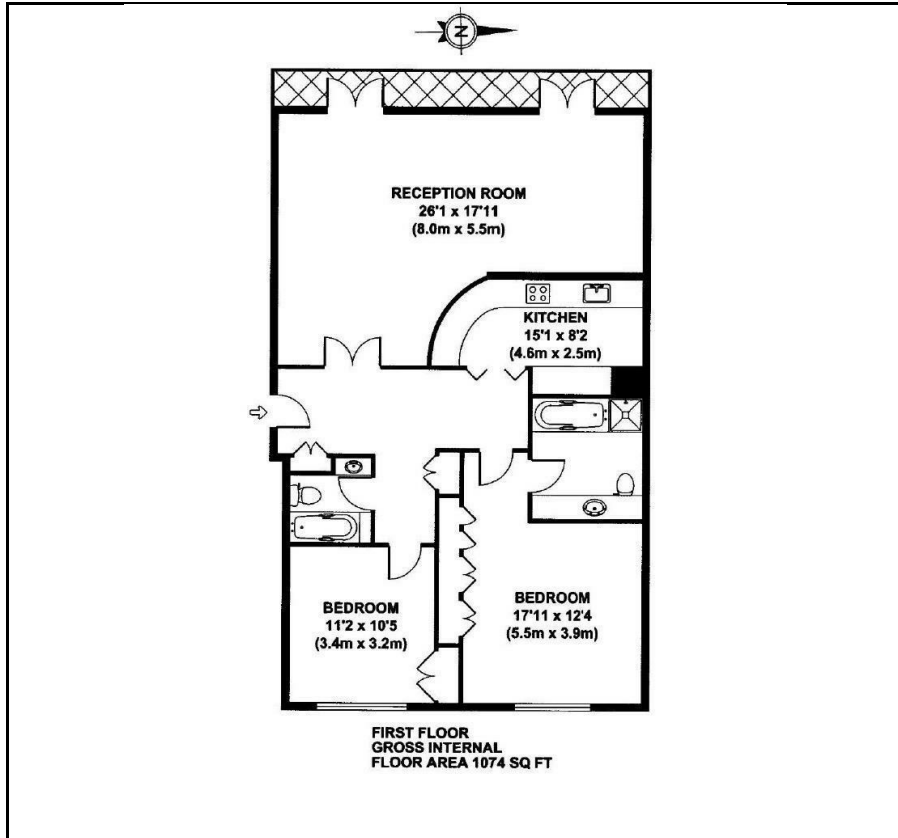
- Freshly redecorated throughout
- Two Double Bedrooms
- Two bathrooms
- First Floor with Lift
- Secure Complex
- Wooden Flooring
- Underground parking
- Marina Views

Viewing

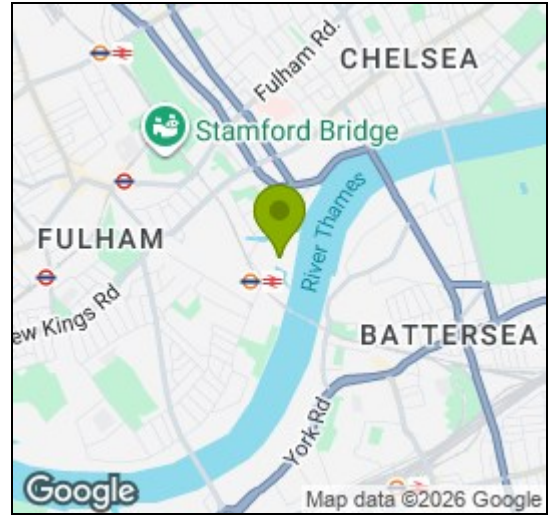
Please contact our Messila Residential Office on 020 7586 6699 if you wish to arrange a viewing appointment for this property or require further information.



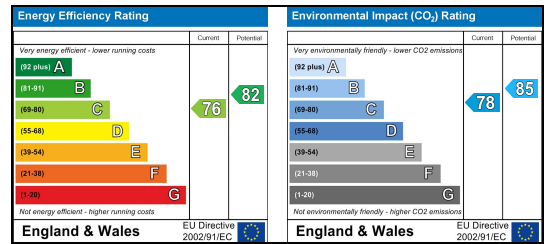
Floor Plan



Area Map



Energy Efficiency Graph



These particulars, whilst believed to be accurate are set out as a general outline only for guidance and do not constitute any part of an offer or contract. Intending purchasers should not rely on them as statements of representation of fact, but must satisfy themselves by inspection or otherwise as to their accuracy. No person in this firm's employment has the authority to make or give any representation or warranty in respect of the property.

Messila Residential

137 Park Road, London, NW8 7HT

T: 020 7586 6699 E: regentspark@messilaresidential.com W: messilaresidential.com