



**Forty Hill House, Forty Hill, Enfield, EN2 9EU**

**welcome to**

**Forty Hill House, Forty Hill, Enfield**

Built in 1780, Barnfields are delighted to offer for sale this magnificent Grade II listed three bedroom penthouse apartment with a superb terrace in the heart of a beautiful conservation area. Extended and converted to apartments in the 1920's, the building boasts a grand entrance hall and a beautiful staircase with a curving mahogany handrail leading to the upper floors. The apartment occupies the whole top floor of the house and has the added advantage of the extremely spacious loft space. Windows on all sides have exceptional views and make the flat light and welcoming, especially the large Georgian windows with internal shutters. The rooms are beautifully proportioned with high ceilings and the original features have been carefully maintained and restored.

The apartment also benefits from a share of the freehold and must be viewed to be fully appreciated.



### **The Original Front Door**

Opens to a grand entrance hall with fitted carpet, a beautiful staircase with a curving mahogany handrail leads to the second floor landing which is solely used by Flat 5. The bright entrance hall within the apartment with two antique French radiators, has doors to all the rooms and an electric ladder to the loft space currently used as a workshop and storage.

### **Kitchen / Breakfast Room**

15' 2" x 13' 3" ( 4.62m x 4.04m )

The spacious kitchen/breakfast room is fitted in a period style including an oak dresser with work surface, sash window to rear with original shutters and window seat with concealed radiator, gas hob and combination microwave fan oven and grill. Sliding island unit gives additional work surface. Cupboard with washing machine and dryer. Door to roof terrace (with concealed security grilles).

### **Roof Terrace**

24' 9" x 12' 10" ( 7.54m x 3.91m )

The spacious roof terrace is totally secluded and is a delightful place for outdoor eating and relaxing surrounded by mature pot plants (with an automated watering system) and views of trees. Outdoor lighting, electric power point and wrought iron staircase leading to the driveway below.

### **Lounge**

18' 1" x 13' 3" ( 5.51m x 4.04m )

An elegant dual aspect room with a sash window to the front with original shutters and a window with concealed security shutters overlooking the roof terrace, an original working Georgian fireplace with wooden surround and slate hearth, fitted carpet.

### **Bedroom One**

15' 2" x 12' 2" ( 4.62m x 3.71m )

With fitted carpet, a sash window to the rear with a window seat and concealed radiator, a wall of fitted wardrobes, door to:-

### **En-Suite WC**

With low level WC, wall mounted hand basin, heated towel rail, fitted carpet, window to side.

### **Lobby**

Leading from the main hallway with cupboard housing the combination boiler, doors to Bedroom Two and Bathroom, fitted carpet.

### **Bathroom**

Panelled bath with shower above and mixer tap and separate shower attachment, low level WC, pedestal wash hand basin, part tiled walls, window to side, lino tile flooring, cast iron radiator with bamboo towel rail.

### **Bedroom Two**

13' x 11' 5" ( 3.96m x 3.48m )

A dual aspect room with two windows, one giving long distance views, the other a sash with original shutters, radiator, built-in cupboard, fitted carpet.

### **Bedroom Three / Study**

10' 10" x 6' 7" ( 3.30m x 2.01m )

Sash window to front with original shutters, radiator and fitted carpet.

### **Outside**

#### **Communal Rear Garden**

A lovely, large, walled communal rear garden with mature trees and an abundance of shrubs and flowers.

#### **Garage**

19' 2" x 9' 2" ( 5.84m x 2.79m )

A single garage en bloc with an up and over door accessed via Goat Lane and a gate at the rear of the communal garden.

#### **Communal Front Garden**

Full of flowers and shrubs and a gravel driveway to the front of the building, provides parking on a first come first served basis and an exclusive EV charge point.

#### **Forty Hall Estate**

Across the road from the front garden is the pedestrian gate to Forty Hall Estate. Enjoy the lake and beautiful gardens around the 17th century house, a good cafe, farm shop, farmers market and lovely rural walks through the estate, farm and ancient woodlands and maybe meet the beavers!



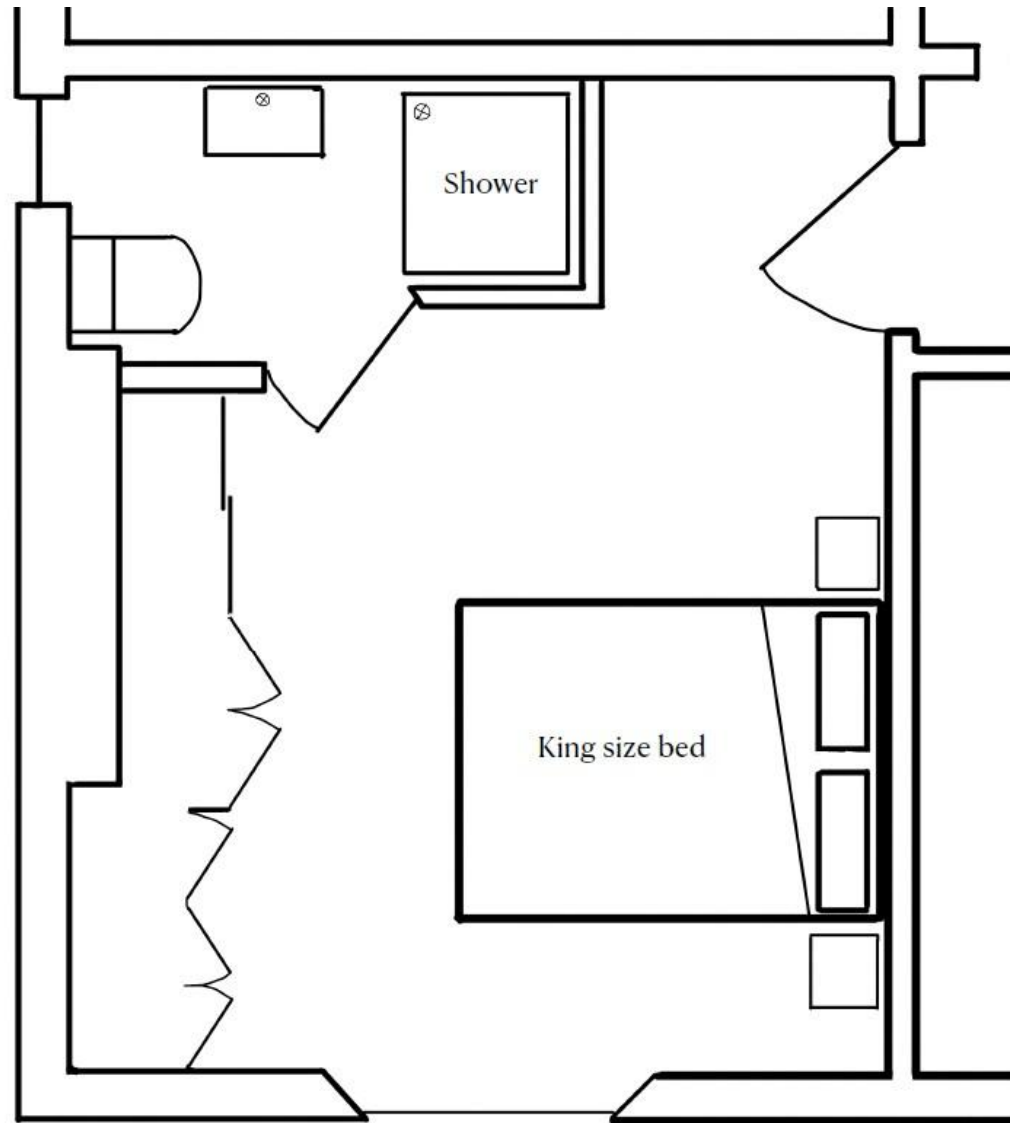
**view this property online** [barnfields.co.uk/Property/ENF105705](http://barnfields.co.uk/Property/ENF105705)











Proposed addition of 800mm x 800mm shower to existing en-suite

welcome to

## Forty Hill House, Forty Hill, Enfield

- Three Bedrooms
- Built in 1870 & Converted in the 1920's
- Share Of Freehold
- Superb Terrace
- Whole Of The Loft Space

Tenure: Leasehold EPC Rating: D

Council Tax Band: E Service Charge: Ask Agent

Ground Rent: 250.00

This is a Leasehold property with details as follows; Term of Lease 125 years from 24 Jun 1989. Should you require further information please contact the branch. Please Note additional fees could be incurred for items such as Leasehold packs.

offers in excess of

**£650,000**



Please note the marker reflects the postcode not the actual property



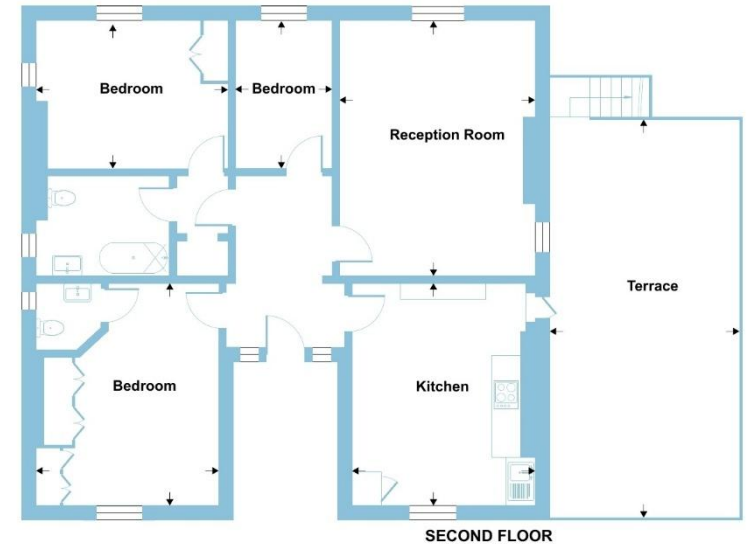
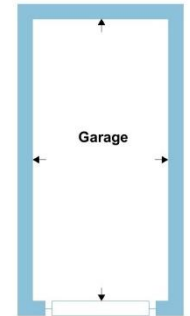
## Forty Hill House, Forty Hill, Enfield, EN2

Approximate Area = 1014 sq ft / 94.2 sq m

Garage = 176 sq ft / 16.3 sq m

Total = 1190 sq ft / 110.5 sq m

For identification only - Not to scale



Floor plan produced in accordance with RICS Property Measurement 2nd Edition, Incorporating International Property Measurement Standards (IPMS2 Residential). © nrichcom 2026. Produced for Barnard Marcus. REF: 1423923



## check out more properties at barnfields.co.uk



Property Ref:  
ENF105705 - 0007

1. MONEY LAUNDERING REGULATIONS Intending purchasers will be asked to produce identification documentation at a later stage and we would ask for your co-operation in order that there is no delay in agreeing the sale. 2. These particulars do not constitute part or all of an offer or contract. 3. The measurements indicated are supplied for guidance only and as such must be considered incorrect. Potential buyers are advised to recheck measurements before committing to any expense. 4. We have not tested any apparatus, equipment, fixtures or services and it is in the buyers interest to check the working condition of any appliances. 5. Where an EPC, or a Home Report (Scotland only) is held for this property, it is available for inspection at the branch by appointment. If you require a printed version of a Home Report, you will need to pay a reasonable production charge reflecting printing and other costs. 6. We are not able to offer an opinion either written or verbal on the content of these reports and this must be obtained from your legal representative. 7. Whilst we take care in preparing these reports, a buyer should ensure that his/her legal representative confirms as soon as possible all matters relating to title including the extent and boundaries of the property and other important matters before exchange of contracts.

Barnfields is a trading name of Sequence (UK) Limited which is registered in England and Wales under company number 4268443, Registered Office is Cumbria House, 16-20 Hockliffe Street, Leighton Buzzard, Bedfordshire, LU7 1GN. VAT Registration Number is 500 2481 05.



**020 8363 3394**



info@barnfields.com



1a Windmill Hill, Enfield, Middlesex, EN2 6SE



**barnfields.co.uk**