



Connells

Bismore Road
Banbury



Property Description

A very well presented three-bedroom detached family home, ideally positioned with an attractive open outlook to the front and offered for sale in excellent decorative order throughout.

The accommodation is arranged over two floors. On the ground floor there is a welcoming entrance hallway with stairs rising to the first floor, a bright sitting room, and a modern open-plan kitchen/dining room. The kitchen is fitted with a range of contemporary units and worktops and benefits from French doors opening onto the rear garden. A separate utility room and ground floor W.C complete the ground floor accommodation.

To the first floor there are three well-proportioned bedrooms, including a main bedroom with en-suite shower room, along with a modern family bathroom.

Outside, the rear garden is private and mainly laid to lawn with a paved patio area adjoining the house, ideal for outdoor dining. To the side of the property there is driveway parking leading to a single garage with power and lighting. To the front, the property enjoys an open and pleasant outlook, enhancing the overall position.

The property is conveniently located within a popular residential development on the northern side of Banbury, with good access to local amenities, schools and transport links.

A very well presented three-bedroom detached family home, ideally positioned with an attractive open outlook to the front and

offered for sale in excellent decorative order throughout.

The accommodation is arranged over two floors. On the ground floor there is a welcoming entrance hallway with stairs rising to the first floor, a bright sitting room, and a modern open-plan kitchen/dining room. The kitchen is fitted with a range of contemporary units and worktops and benefits from French doors opening onto the rear garden. A separate utility room and ground floor W.C complete the ground floor accommodation.

To the first floor there are three well-proportioned bedrooms, including a main bedroom with en-suite shower room, along with a modern family bathroom.

Outside, the rear garden is private and mainly laid to lawn with a paved patio area adjoining the house, ideal for outdoor dining. To the side of the property there is driveway parking leading to a single garage with power and lighting. To the front, the property enjoys an open and pleasant outlook, enhancing the overall position.

The property is conveniently located within a popular residential development on the northern side of Banbury, with good access to local amenities, schools and transport links.

A very well presented three-bedroom detached family home, ideally positioned with an attractive open outlook to the front and offered for sale in excellent decorative order throughout.

The accommodation is arranged over two floors. On the ground floor there is a welcoming entrance hallway with stairs rising to the first floor, a bright sitting room, and a modern open-plan kitchen/dining room. The kitchen is fitted with a range of contemporary units and worktops and benefits from French doors opening onto the rear garden. A separate utility room and ground floor W.C complete the ground floor accommodation.

To the first floor there are three well-proportioned bedrooms, including a main bedroom with en-suite shower room, along with a modern family bathroom.

Outside, the rear garden is private and mainly laid to lawn with a paved patio area adjoining the house, ideal for outdoor dining. To the side of the property there is driveway parking leading to a single garage with power and lighting. To the front, the property enjoys an open and pleasant outlook, enhancing the overall position.

The property is conveniently located within a popular residential development on the northern side of Banbury, with good access to local amenities, schools and transport links.

A very well presented three-bedroom detached family home, ideally positioned with an attractive open outlook to the front and offered for sale in excellent decorative order throughout.

The accommodation is arranged over two floors. On the ground floor there is a welcoming entrance hallway with stairs rising to the first floor, a bright sitting room, and a modern open-plan kitchen/dining room. The kitchen is fitted with a range of contemporary units and worktops and benefits from French doors opening onto the rear garden. A

separate utility room and ground floor W.C complete the ground floor accommodation.

To the first floor there are three well-proportioned bedrooms, including a main bedroom with en-suite shower room, along with a modern family bathroom.

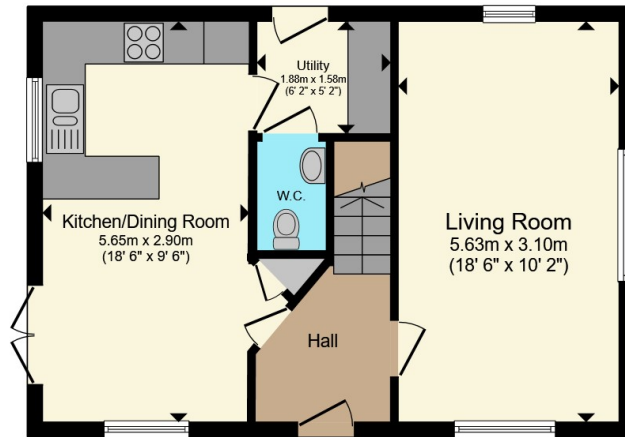
Outside, the rear garden is private and mainly laid to lawn with a paved patio area adjoining the house, ideal for outdoor dining. To the side of the property there is driveway parking leading to a single garage with power and lighting. To the front, the property enjoys an open and pleasant outlook, enhancing the overall position.

The property is conveniently located within a popular residential development on the northern side of Banbury, with good access to local amenities, schools and transport links.

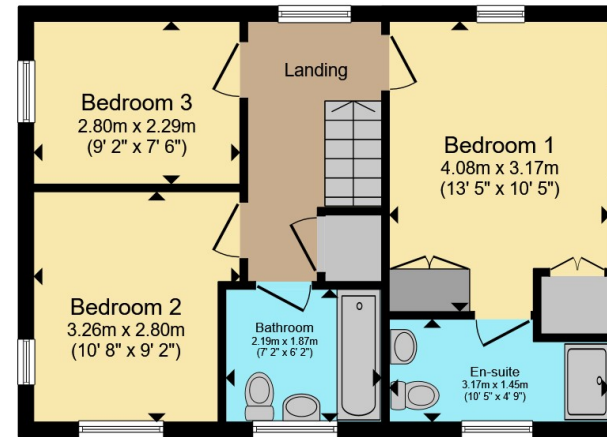








Ground Floor



First Floor

Total floor area 91.0 m² (979 sq.ft.) approx

This floor plan is for illustrative purposes only. It is not drawn to scale. Any measurements, floor areas (including any total floor area), openings and orientation are approximate. No details are guaranteed, they cannot be relied upon for any purpose and they do not form part of any agreement. No liability is taken for any error, omission or misstatement. A party must rely upon its own inspection(s). Powered by www.propertybox.io



To view this property please contact Connells on

T 01295 268 101
E banbury@connells.co.uk

33 Bridge Street
 BANBURY OX16 5PN

EPC Rating: A Council Tax
 Band: D

Tenure: Freehold

view this property online connells.co.uk/Property/BAN309994



1. MONEY LAUNDERING REGULATIONS Intending purchasers will be asked to produce identification documentation at a later stage and we would ask for your co-operation in order that there will be no delay in agreeing the sale. 2. These particulars do not constitute part or all of an offer or contract. 3. The measurements indicated are supplied for guidance only and as such must be considered incorrect. Potential buyers are advised to recheck measurements before committing to any expense. 4. We have not tested any apparatus, equipment, fixtures, fittings or services and it is in the buyers interest to check the working condition of any appliances.

Connells Residential is registered in England and Wales under company number 1489613, Registered Office is Cumbria House, 16-20 Hockliffe Street, Leighton Buzzard, Bedfordshire, LU7 1GN. VAT Registration Number is 500 2481 05.

See all our properties at www.connells.co.uk | www.rightmove.co.uk | www.zoopla.co.uk

Property Ref: BAN309994 - 0005