



Shirland Road, W9

£345

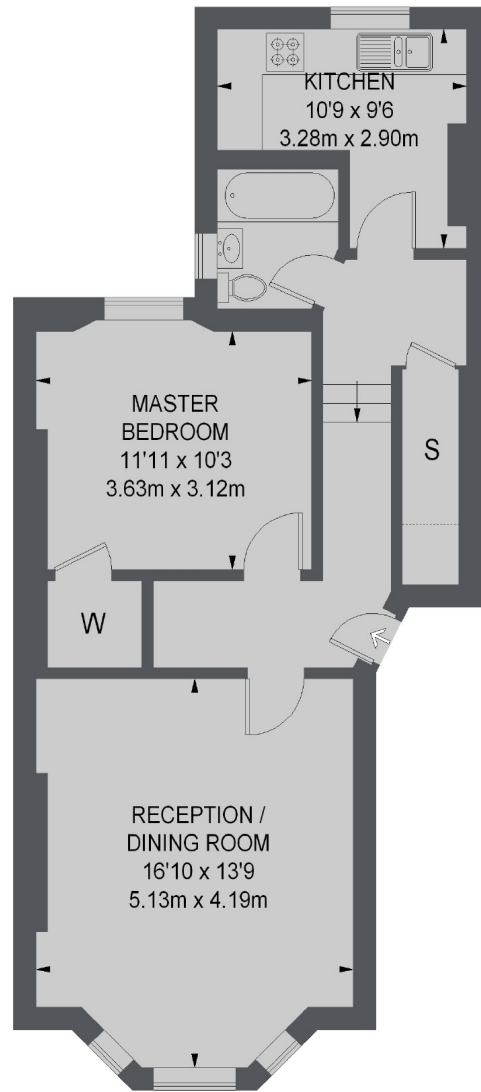
A raised ground floor, one bedroom, period conversion flat. With a bay-windowed reception/dining room, a large double bedroom, contemporary bathroom and a separate modern kitchen.

Shirland Road is ideally located for both Maida Vale and Warwick Avenue tube stations, the open spaces of Paddington rec and a number of independent shops and cafés.

Features

Period Conversion
One Bedroom
Raised Ground Floor
Wooden Flooring
Separate Kitchen
Great Location

Shirland Road,
Maida Vale, W9



RAISED GROUND FLOOR

 = **REDUCED HEADROOM
BELOW 1.5 M / 5'0**

TOTAL APPROX. FLOOR AREA 610 SQ. FT. (56.67 SQ. M.)
(EXCLUDING REDUCED HEADROOM)

Contact

To arrange a viewing call our office on the number below or visit our website.



Energy Rating: D. We aim to make our particulars both accurate and reliable. However they are not guaranteed; nor do they form part of an offer or contract. If you require clarification on any points then please contact us, especially if you're traveling some distance to view. Please note that appliances and heating systems have not been tested and therefore no warranties can be given as to their good working order.