

# Tynemouth Street

£850,000

BRIK



# Tynemouth Street

£850,000

Share of Freehold

3 BED

Maisonette

0000

SQ FT

0000

SQ M

This stylish and beautifully finished maisonette is arranged over two floors and offers over 1,000 sq ft of living space. On the first floor of the flat is an open plan living area with a working fireplace and a modern kitchen with plenty of storage and integrated appliances. Also on this floor are two double bedrooms with built-in storage. There is also a separate shower room and separate utility room. The second floor has been converted to create a principal bedroom with an en-suite bathroom and ample built-in storage. This impressive property also benefits from having its own entrance on the ground floor.

- 3 bedrooms
- 2 bathrooms
- Open plan kitchen & living room
- Own entrance
- Separate utility room
- Split level
- Share of freehold
- Close to transport links
- Approx. 1,016 sq ft (94.36 sq m)
- Council tax band - D

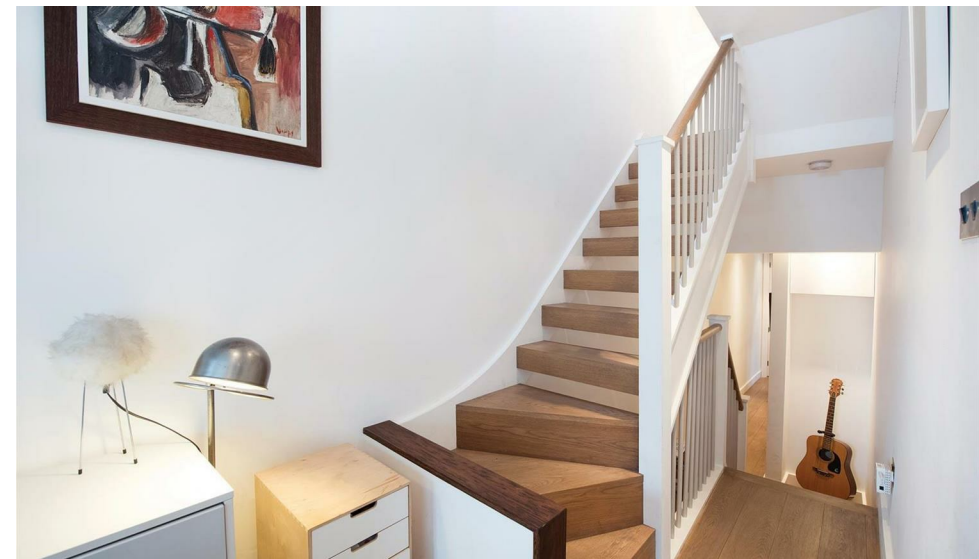
Tynemouth Street is located in the Sands End area of Fulham, close to the Thames path and just south of Fulham Broadway. The property is close to the popular Fulham Arms Pub and the riverside restaurants and cafés of Imperial Wharf. There is also a large Sainsbury's supermarket and further restaurants and cafés. You can travel north from Imperial Wharf overground station to West Brompton tube station (District Line, Zone 2) in 5 minutes. Also south, to Clapham Junction main line station (one stop) where you can get regular trains to Waterloo and Gatwick Airport. The property is also within walking distance to South Park. The closest underground stations are Fulham Broadway or Parsons Green (District Line, Zone 2). EPC rating - C

**JAMES SIMS**

020 7384 6790

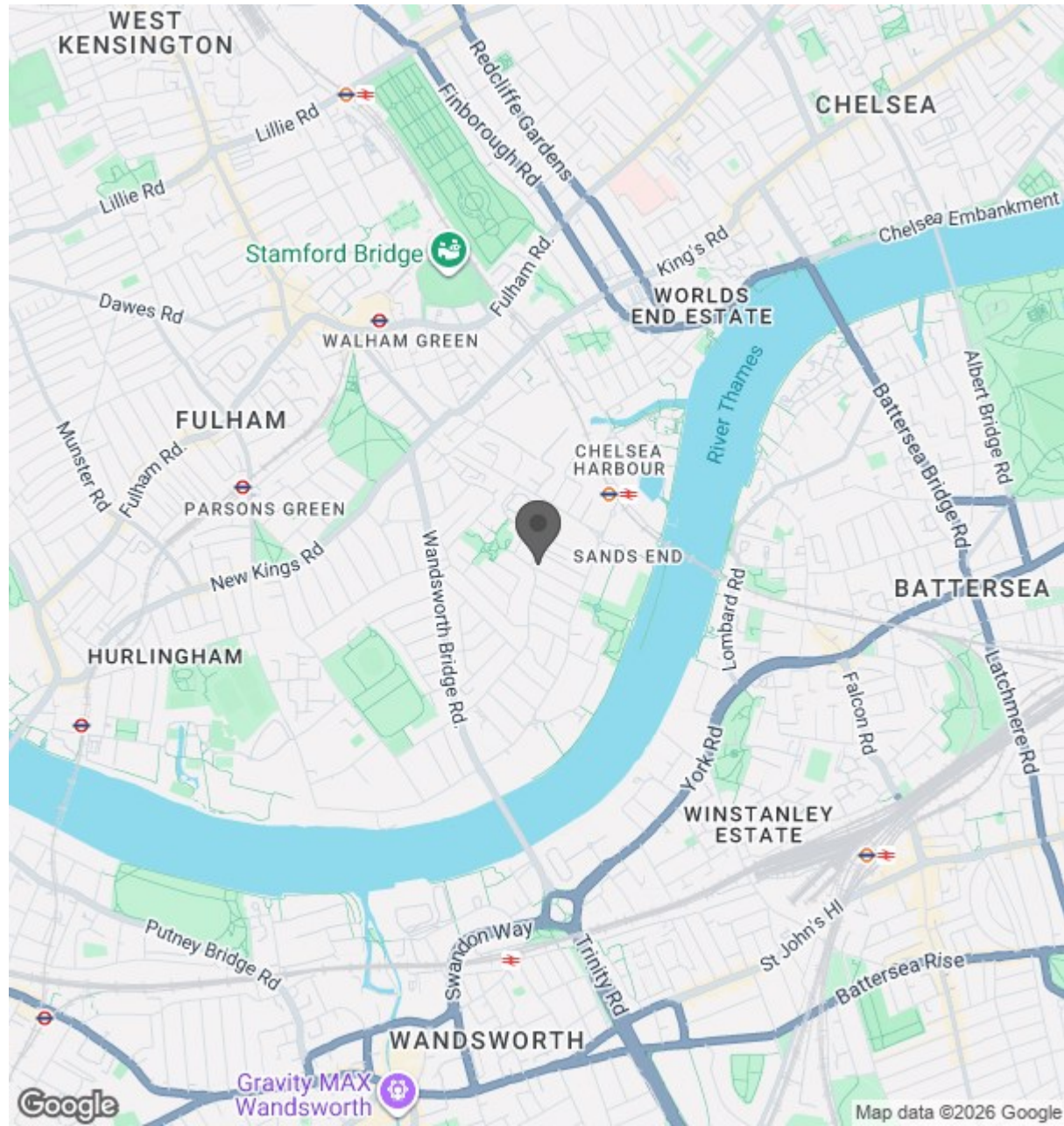
james@brik.co.uk







Location



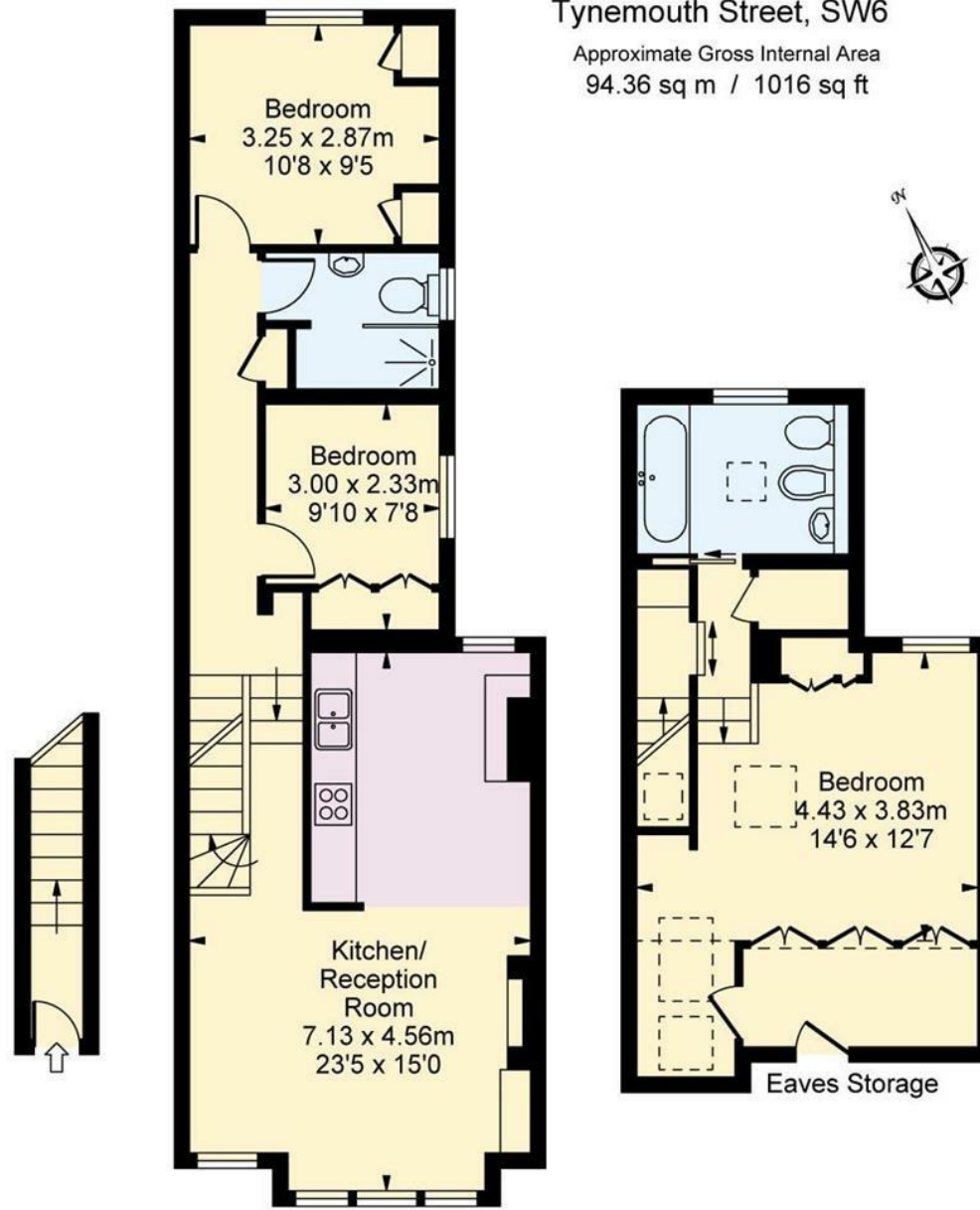
**BRIK**

0000  
SQ FT

0000  
SQ M

**Tynemouth Street, SW6**

Approximate Gross Internal Area  
94.36 sq m / 1016 sq ft



**Ground Floor**  
Entrance  
Approximate Gross Internal Area

**First Floor**  
Approximate Gross Internal Area

**Second Floor**  
Approximate Gross Internal Area

Important notice Brik give notice that: all text, photographs and plans on these brochure are for guidance only and are not necessarily comprehensive; any areas, measurements or distances given are approximate; these details do not constitute part of an offer or contract and must not be relied upon as statements or representations of fact; it should not be assumed that the property has all the necessary planning permissions and building regulations approvals; we are not authorised to give any representations or warranties in relation to this property whatsoever; potential purchasers must satisfy themselves as to the correctness of all details by inspection or otherwise. Brik, 77 Parsons Green Lane, Fulham, London SW6 4JA Tel: 020 7384 6790 Email: hello@brik.co.uk