

43 Green Close

Epping Green, Epping

Nestled within the village of Epping Green, this three bedroom semi-detached home is filled with scope and possibility. A super place to call home, welcome to Green Close.

Council Tax band: E

Tenure: Freehold

- Three bedroom family home
- Driveway
- Opportunity to add own stamp
- Private garden
- Much loved village location
- Short drive to Epping high street & station



Porch

WC

Living Room

15' 2" x 15' 1" (4.62m x 4.59m)

Dining Area

7' 7" x 9' 0" (2.32m x 2.74m)

Kitchen

7' 3" x 10' 6" (2.20m x 3.20m)

Reception Room

8' 0" x 16' 10" (2.45m x 5.12m)

Bedroom

8' 9" x 11' 1" (2.66m x 3.37m)

Bedroom

8' 9" x 9' 11" (2.66m x 3.03m)

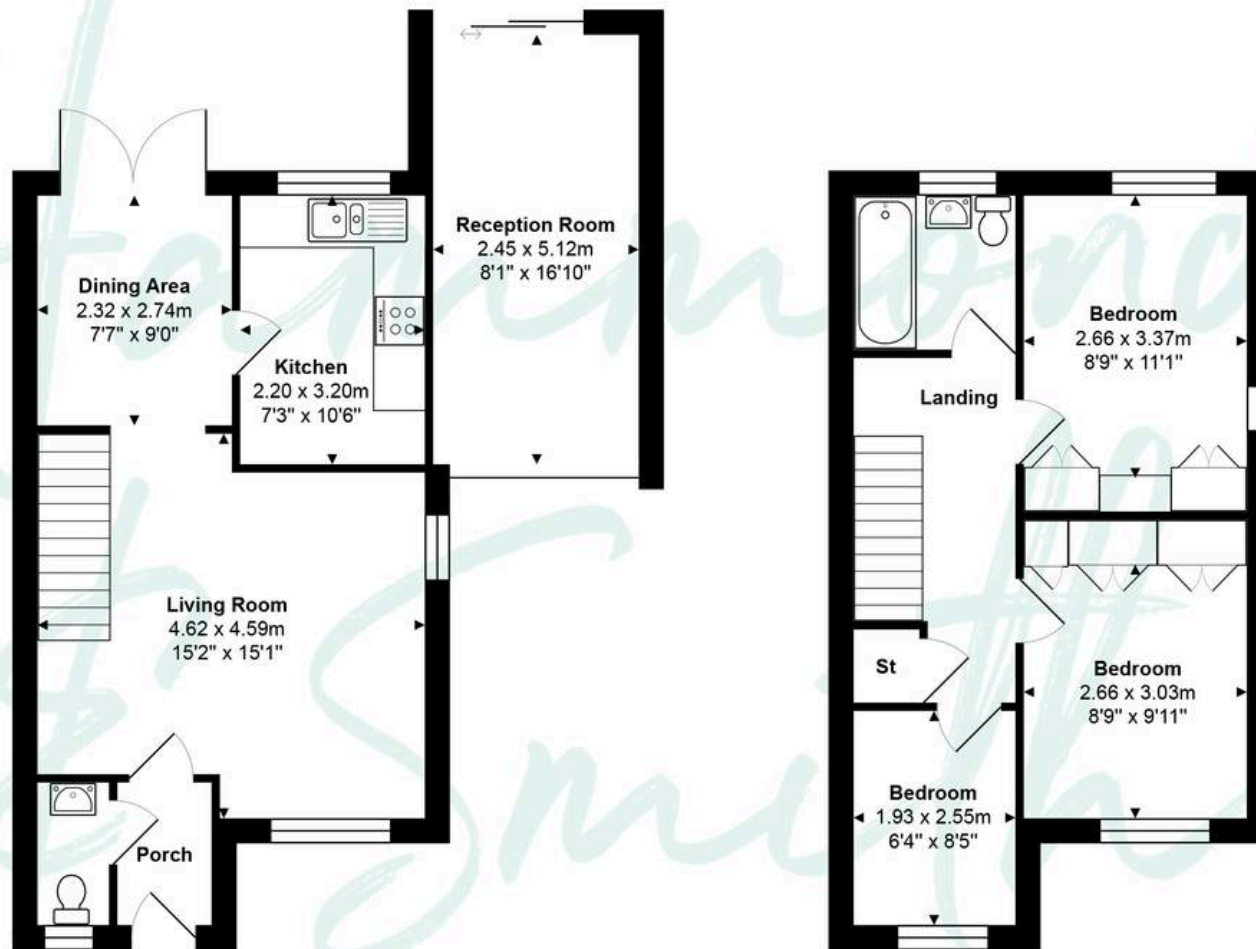
Bedroom

6' 4" x 8' 4" (1.93m x 2.55m)

Bathroom







Ground Floor

First Floor

Total Area: approx. 87.1 m² ... 938 ft²

THE FLOORPLAN IS FOR ILLUSTRATIVE PURPOSES ONLY AND IS NOT TO SCALE.
 Measurements and features are approximate and may differ from the actual property. Verify all details independently; no liability is accepted for errors or omissions.

Property marketing provided by www.fotomarketing.co.uk