



Doods Road, Reigate

Guide Price £375,000 - £400,000





Located on a popular residential road in central Reigate, Casterbridge, is just a short walk to the train station and town centre. The spacious rooms with high ceilings and large windows, are full of natural light and the character of the building really shines through.





Guide Price £375,000 - £400,000

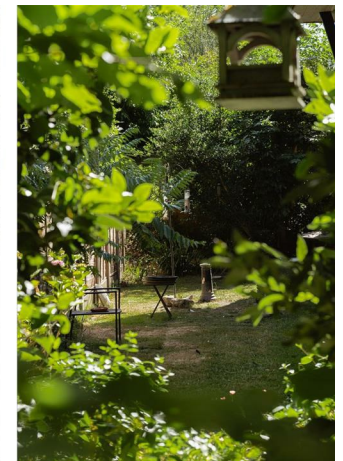
Full of character and charm, this spacious apartment is part of an impressive conversion, originally built in the 1800's. A perfect blend of contemporary and character, with high ceilings, large sash windows, original cornicing, doors and skirting boards, blended with modern finishes in the kitchen and bathrooms.

The large living/dining area, has two large sash windows which really let the natural light flood in from both elevations. Alongside the high ceilings with their impressive original cornicing, there is a feature fireplace that creates a warm and homely feel. The room is large enough for a dining table and chairs as well as a comfy sofa and is a great space for entertaining.

The master bedroom is equally spacious, with a large window overlooking the rear communal garden. It has its own en suite shower room and there is a separate bathroom located off the hallway as well. The second bedroom is also a double room and has the option of adding double doors to create a separate study area or dressing room.

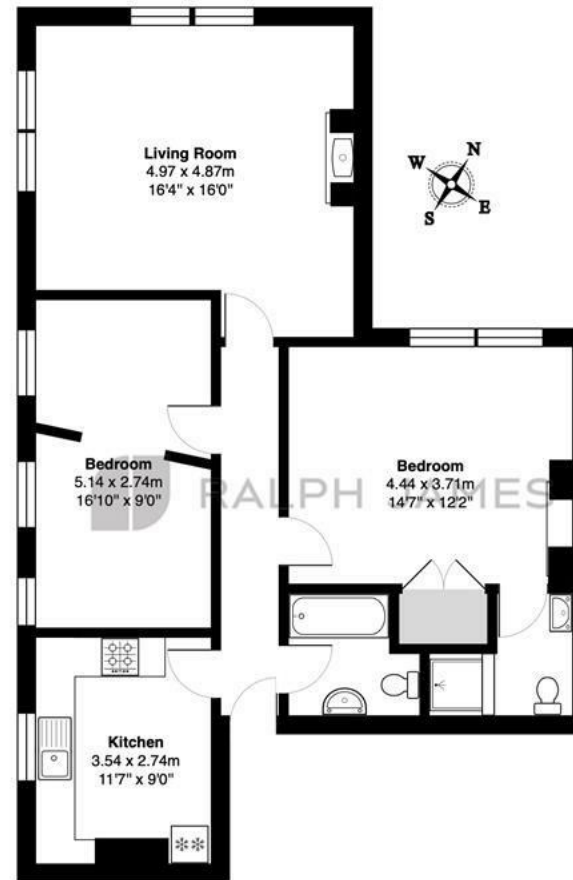
The kitchen is fitted to a classic contemporary style, with pale blue units complimented by wooden block worksurfaces. There is ample storage space and room for a small breakfast table as well.

Outside there is a communal garden to the rear and residents parking available. The property also has use of a communal cellar, which is great for extra storage.



Need to know

- Stunning conversion apartment within walking distance to Reigate town and station
- Two good size double bedrooms
- Large spacious living room with bright double aspect
- Character features including high ceilings, original cornicing and fireplace
- Modern kitchen with space for a small breakfast table
- En suite shower room to main bedroom and separate bathroom
- Communal garden and cellar for storage
- Residents parking
- Share of Freehold



First Floor

Casterbridge, Doods Road, Reigate

Total Area: 79.9 m² ... 860 ft²

FOR ILLUSTRATIVE PURPOSES ONLY.

Whilst every attempt has been made to ensure the accuracy of the floor plan shown, all measurements, positioning, fixtures, features, fittings and any other data shown are an approximate interpretation for illustrative purposes only and are not to scale.

No responsibility is taken for any error, omission, miss-statement or use of data shown.

The above statement applies to both 'Still Moving London LTD' and the Company or individual displaying this floor plan.

Unauthorised reproduction prohibited.

Â© Still Moving London LTD (www.stillmoving.london)

Interested?

reigate@ralphjames.co.uk
01737 333677

ralphjames.co.uk

