



dm^g
DAVID MARTIN
GROUP

Carolina Way
Tiptree, CO5 0DW

£300,000
EPC Rating 'd'

- TWO DOUBLE BEDROOMS
- GARAGE & PARKING

- NO CHAIN
- CLOSE TO SHOPS & SCHOOLS





Property Description

We are delighted to offer for sale this charming two-bedroom end-of-terrace house, ideally located in the heart of Tiptree, within easy reach of local schools, shops, and amenities. The accommodation features a spacious lounge that flows seamlessly into a kitchen/diner at the rear of the property, creating an ideal space for family living and entertaining. Upstairs, you will find two double bedrooms and a fully tiled bathroom suite. Externally, the property benefits from a private rear garden, with direct access to a single garage and off-road parking. This home combines a central location with practical living space, making it a perfect choice for families or first-time buyers.



ENTRANCE HALL/PORCH

Entrance via a UPVC door into porch;

LOUNGE

15' 11" x 14' 11" (4.85m x 4.55m) White tiled flooring, double glazed window to front aspect of property, wall mounted radiator, opening to:

KITCHEN/DINER

14' 10" x 9' 7" (4.52m x 2.92m) A modern fitted kitchen featuring a range of white fronted wall and base units with wood-effect work surfaces and matching upstands. The kitchen is equipped with a built-in oven and four-ring electric hob with extractor hood over, there is also space for washing machine and fridge freezer, wood-effect flooring create a contemporary finish. A uPVC double-glazed window overlooks the rear aspect, while an external UPVC double-glazed door provides access to the back garden. Additional benefits include a useful built-in storage cupboard.

STAIRS

Rising to first floor

LANDING

Loft access, storage cupboard



BEDROOM ONE

12' 6" x 9' 11" (3.81m x 3.02m) Double room. UPVC double glazed window to front aspect of property.

BEDROOM TWO

13' 3" x 9' 8" (4.04m x 2.95m) Double room, UPVC double glazed window to rear aspect of property.



BATHROOM

Fitted white suite comprising of a WC, wash hand basin, 'P' shaped panel bath with shower overhead, fully tiled walls, obscure window to rear aspect, radiator.





OUTSIDE

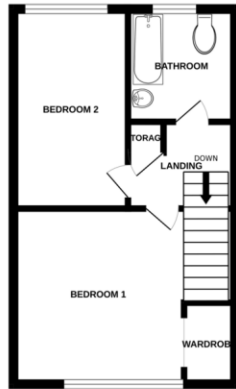
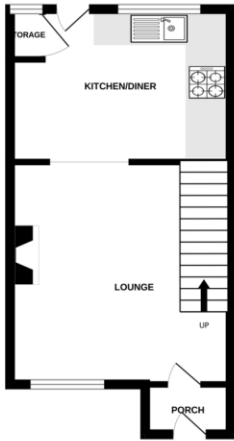
OUTSIDE/GARDEN

To the front of the property there is a lawned area with a flower bed and driveway providing parking for one vehicle. To the rear of the property there is a small patio area just outside the back door with sleeper style steps up to the lawn which has direct access into the single garage which is situated in the block behind and also has vehicular access.



GROUND FLOOR

1ST FLOOR



Whilst every attempt has been made to ensure the accuracy of the floorplan contained herein, measurements of floors, ceilings, rooms and other areas are approximate and no responsibility is taken for any error or omission. The services, systems and appliances shown have not been tested and no guarantee is given as to their operation or efficiency and no other.

Score	Energy rating	Current	Potential
92+	A		
81-91	B		82 B
69-80	C		
55-68	D	59 D	
39-54	E		
21-38	F		
1-20	G		



David Martin
35a Church Road
Tiptree
Colchester
Essex

www.dmgptiptree.co.uk
%office_emailAddress%
01621 815815

Agents Note: Whilst every care has been taken to prepare these sales particulars, they are for guidance purposes only. All measurements are approximate are for general guidance purposes only and whilst every care has been taken to ensure their accuracy, they should not be relied upon and potential buyers are advised to recheck the measurements