



## Railway Terrace

Guide Price £160,000 - £165,000

- Guide Price: £160,000 - £165,000
- Two-Bedroom Terraced House
- Family Shower Room
- En Suite Bathroom to Master Bedroom
- Spacious Reception Room
- Enclosed Rear Garden
- Communal Car Park
- Close to Shops, Schools, and Amenities and Excellent Transport Links
- EPC Rating: D



**Pinkmove**

01633 746088  
team@pinkmove.co.uk



## About the property

Located on the quiet Railway Terrace in Sebastopol, this delightful two-bedroom terraced house is beautifully presented throughout. The spacious reception room is ideal for relaxing or entertaining, and leads through to a thoughtfully arranged kitchen that maximises both workspace and storage.

To the rear of the ground floor, you'll find a modern family shower room, offering both convenience and functionality.

Upstairs, the property boasts two generous double bedrooms, one of which benefits from its own en suite bathroom, providing added comfort and privacy. The layout is well-considered, with living spaces flowing effortlessly across both floors.

Situated in a peaceful residential area, the property enjoys excellent access to local amenities. Shops and supermarkets are within walking distance, and Pontypool town centre is just over a mile away.

Families will appreciate the proximity to well-regarded schools, including Griffithstown Primary School (0.6 miles), George Street Primary (1.1 miles), and West Monmouth School (1.5 miles). Pontypool & New Inn railway station is only 1.3 miles away, offering direct services to Cardiff and beyond, while the nearby A4042 provides easy road access to Cwmbran and Newport.

This property is ideal for first-time buyers, small families, or investors seeking a well-located and well-maintained home.





**Accommodation**

**Living Room**

20' x 12' 5" ( 6.10m x 3.78m )

Max measurements

**Kitchen**

10' x 7' 4" ( 3.05m x 2.24m )

**Shower Room**

6' 6" x 4' 3" ( 1.98m x 1.30m )

**Bedroom 1**

9' 9" x 12' 10" ( 2.97m x 3.91m )

Max measurements

**Bedroom 2**

10' 2" x 10' 11" ( 3.10m x 3.33m )

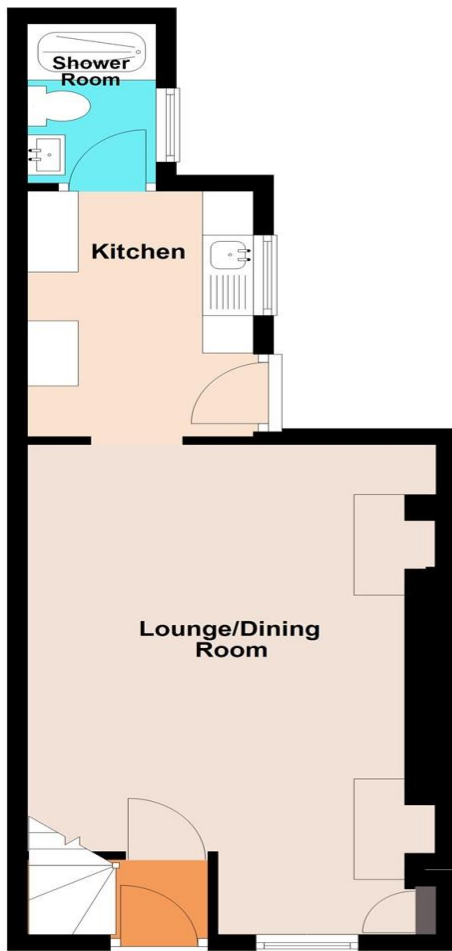
**En-Suite Bathroom**

10' x 7' 6" ( 3.05m x 2.29m )

## Floorplan

### Ground Floor

Approx. 33.5 sq. metres (360.7 sq. feet)



### First Floor

Approx. 31.6 sq. metres (340.0 sq. feet)



Total area: approx. 65.1 sq. metres (700.6 sq. feet)  
**25 Railway Terrace**

## Important Information

Note while we endeavour to make our sales details accurate and reliable, if there is any point which is of particular interest to you, please contact the office and we will be pleased to confirm the position for you. We have not personally tested any apparatus, equipment, fixtures, fittings or services and cannot verify they are in working order or fit for their purposes. Nothing in these particulars is intended to indicate that carpets or curtains, furnishings or fittings, electrical goods (whether wired or not). Gas fires or light fittings or any other fixtures not expressly included form part of the property offered for sale. This computer generated Floorplan, if applicable, is intended as a general guide to the layout and design of the property. It is not to scale and should not be relied upon for dimensions. Tenure: We cannot confirm the tenure of the property as we have not had access to the legal documents. The buyer is advised to obtain verification from their solicitor or surveyor.

Peter Alan Limited is registered in England and Wales under company number 2073153, Registered Office is Cumbria House, 16-20 Hockliffe Street, Leighton Buzzard, Bedfordshire, LU7 1GN. VAT Registration Number is 500 2481 05. For activities relating to regulated mortgages and non-investment insurance contracts, Peter Alan Limited is an appointed representative of Connells Limited which is authorised and regulated by the Financial Conduct Authority. Connells Limited's Financial Services Register number is 302221. Most buy-to-let