

Thirlmere  
Stevenage | SG1 6AQ

AGENT HYBRID

**Guide Price £340,000 -  
£355,000**

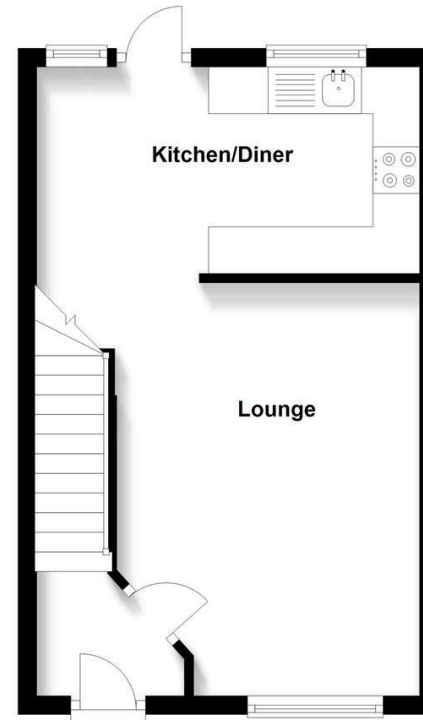


GUIDE PRICE £340,000 - £355,000 \* We welcome to the market, a CHAIN FREE, very well presented and much improved, Two Bedroom End of Terrace Home, in a cul-de-sac position of a sought after road in Great Ashby. Built by Bovis Homes, the property is within close proximity to Serpentine District Park and amenities nearby, located at 'The Neighbourhood Centre'. Accommodation briefly comprises of; An Entrance Lobby, with door entering a good sized Lounge, openly flowing into a Modern, Re-Fitted Kitchen Diner, benefiting from integral appliances and a wall lined with real brick slips, creating a textured feature wall adjacent to the dining table. Stairs rise to the first floor landing, where doors lead you to a Re-Fitted Bathroom, Two Good Sized Bedrooms, both with fitted wardrobes and you will also find a fully tiled En-Suite to the Main Bedroom. Externally, the property benefits from a beautifully Landscaped Rear Garden and Two Parking Spaces to the front, side by side. Viewing comes highly recommended.

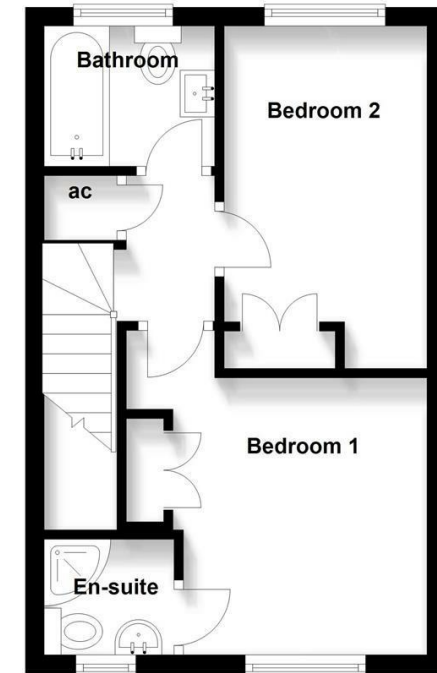
**DIMENSIONS**

- Entrance Hallway
- Lounge 15'2 x 10'5
- Kitchen/Diner 13'5 x 11'7
- Bedroom 1: 11'9 x 8'4
- En-Suite
- Bedroom 2: 12'0 x 7'2
- Bathroom

**Ground Floor**



**First Floor**



Energy Efficiency Rating		
	Current	Potential
Very energy efficient - lower running costs		
(92 plus) <b>A</b>		
(81-91) <b>B</b>		<b>87</b>
(69-80) <b>C</b>		
(55-68) <b>D</b>	<b>68</b>	

IMPORTANT: We would like to inform prospective purchasers that these sales particulars have been prepared as a general guide only. A details survey has not been carried out, not the service, appliances and fittings tested. Room sizes should not be relied upon for furnishing purposes and are approximate. If floor plans are included, they are for guidance and illustration purposes only and may not be to scale. If there are any important matters likely to affect your decision to buy, please contact us before viewing the property.

**Agent Hybrid**  
57 High Street, Stevenage, Hertfordshire, SG1 3AQ  
Tel: 01438 870673 - enquiries@agenthybrid.co.uk  
[www.agenthybrid.co.uk](http://www.agenthybrid.co.uk)

**AGENT HYBRID**