



TO BE SOLD FROM SALE



CORNERSTONE
RESIDENTIAL ESTATE AGENTS

**ETHOLWOLD DRIVE, WICKHAM MARKET, IP13
OFL**

TENURE : FREEHOLD

£525,000

- Four Bedroom Family Home
- Lounge & Kitchen/Diner
- Utility & Cloakroom
- Garage & Carport
- En-Suite & Family Bathroom
- Available Now

THE ACCOMMODATION



Kitchen 3.92m x 3.84m (12' 10" x 12' 7")

Dining Area 3.99m x 3.06m (13' 1" x 10')

Living Room 4.67m x 3.87m (15' 4" x 12' 8")

Utility 2.11m x 1.67m (6' 11" x 5' 6")



Bedroom One & En-Suite 3.91m x 3.17m (12' 10" x 10' 5")
(Bedroom measurement only)

Bedroom Two 3.86m x 3.11m (12' 8" x 10' 2")

Bedroom Three 3.13m x 3.02m (10' 3" x 9' 11")

Bedroom Four 3.15m x 2.91m (10' 4" x 9' 7")



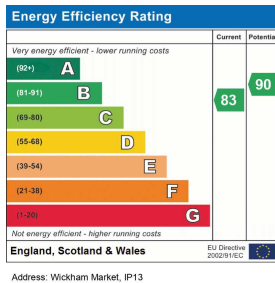
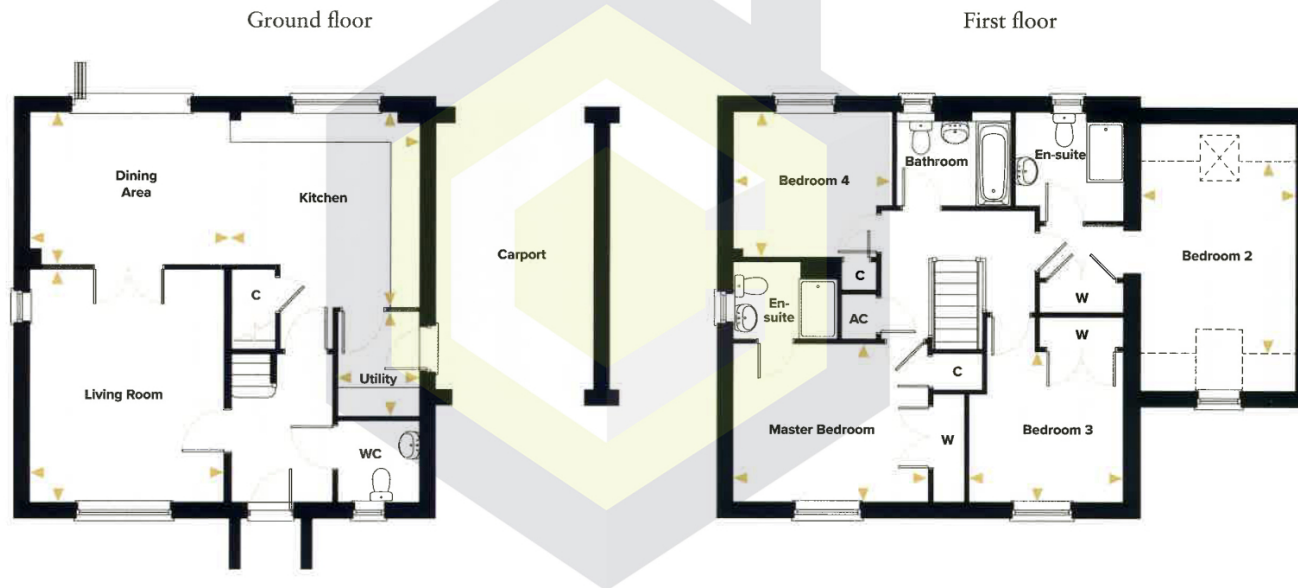
THE PROPERTY & LOCATION

A brand new home situated within the superb Wickham Gate development. The property is available for immediate occupation and comprises an entrance hall, cloakroom, kitchen/dining area, living room, utility, four bedrooms, two en-suites and a family bathroom. There is a carport and garage, flooring throughout, integrated appliances and turf.

Wickham Market is a large village with an excellent range of amenities on offer including a range of shops, restaurants, doctors surgery, library, dentist, a primary school and a church. The A12 is within easy reach, along with Woodbridge, and there's a mainline railway station at Campsea Ashe.



TO ARRANGE A VIEWING OF THIS PROPERTY OR
TO SEE HOW WE CAN HELP YOU MOVE CALL US ON 01394 547000



Service Charge: £209.09 pa

We understand from our vendor that the property is connected to mains electricity, water and drainage.

Please visit Ofcom - to view the mobile and network coverage



42 MARKET HILL, WOODBRIDGE, SUFFOLK, IP12 4LU
 T:01394 547000 E:WOODBRIDGE@CR-EA.CO.UK W:CR-EA.CO.UK
 CORNERSTONE RESIDENTIAL LTD IS A REGISTERED COMPANY IN ENGLAND & WALES
 REGISTERED NUMBER: 9421778
 REGISTERED OFFICE: 42 MARKET HILL, WOODBRIDGE, IP12 4LU

Disclaimer

Whilst every care has been taken in the preparation of these particulars, and they are believed to be correct, they are not warranted and intending purchasers/lessees should satisfy themselves as to the correctness of the information given