



Nassington Road, NW3

£3,000 Per calendar month

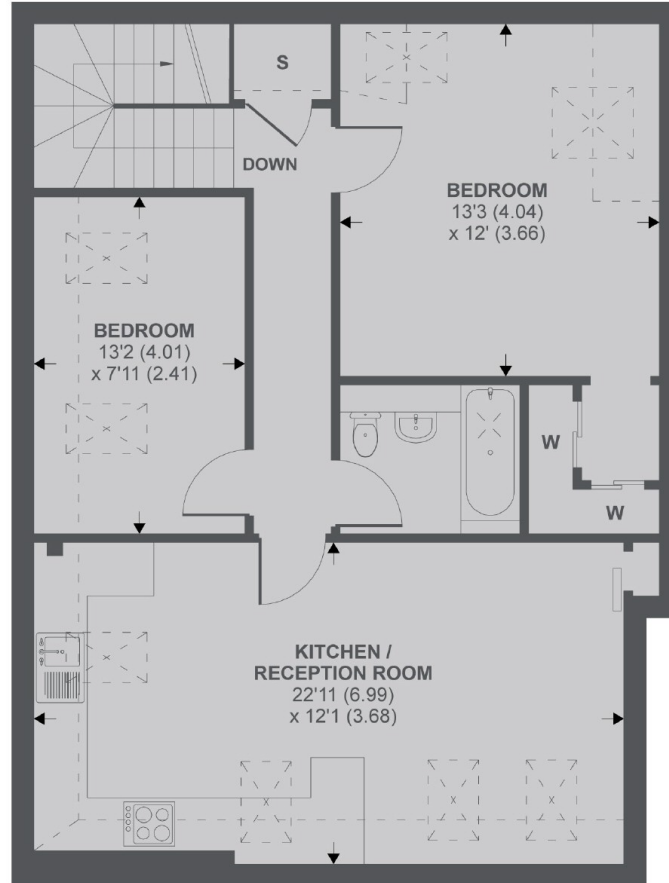
A modern top floor apartment set within this conversion building located in Hampstead. There are two double bedrooms, reception room with open plan kitchen and bathroom with shower.

Nassington Road is located less than 100 yards from Hampstead Heath and less than a mile from Hampstead Overground railway station.

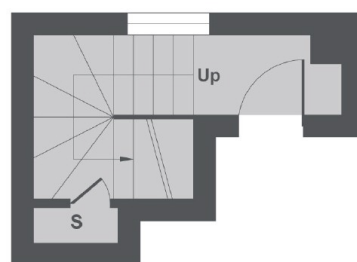
Features

- Two Double Bedrooms
- Top Floor Apartment
- Open Plan Kitchen
- Wood Floors in Reception
- Conversion Building
- Hampstead Heath

Nassington Road, London, NW3



Raised 3rd Floor



3rd Floor

Denotes restricted
head height

Nassington Road NW3

APPROX FLOOR AREA 788 SQ.FT 73.2 SQ.M (INCLUDES RESTRICTED HEAD HEIGHT)

Copyright nichecom.co.uk 2018 REF : 315205

Dexters

Hampstead
56 Heath Street
London
NW3 1DL
Lettings
020 7433 0274

Energy Rating: E. We aim to make our particulars both accurate and reliable. However they are not guaranteed; nor do they form part of an offer or contract. If you require clarification on any points then please contact us, especially if you're traveling some distance to view. Please note that appliances and heating systems have not been tested and therefore no warranties can be given as to their good working order.

 **RICS** | Regulated
Estate Agent
and Letting Agent

dexters.co.uk